



Bay Architects

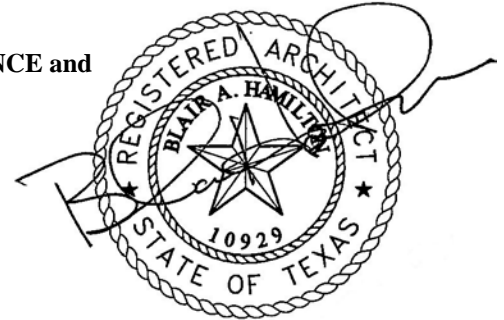
18201 Gulf Freeway
Webster, Texas 77598
Tel 281.286.6605
Fax 281.286.9606

ADDENDUM NO. 04

11 August 2010

Project: **NEW TRANSPORTATION, MAINTENANCE and AGRICULTURAL BUILDINGS**
Channelview Independent School District

Issued by: **Bay Architects, Inc.**
18201 Gulf Freeway
Webster, TX 77598
281-286-6605



08/11/10

Bay Project No.: **0937**

Prepared for: **Prospective Proposers**

PART A: NOTICE TO PROPOSERS:

1. Receipt of this Addendum shall be acknowledged on the Proposal Form. Failure to do so may subject Proposers to disqualification. Each proposer shall make necessary adjustments and submit his proposal with full knowledge of all modifications, clarification, and supplemental data included therein.
2. This Addendum forms part of the Contract Documents and shall be incorporated integrally therewith. Where provisions of the following supplemental data differ from those of previously issued documents, this Addendum shall govern.
3. The following Contract Documents have been issued to date delineating the Work (Project).

Contract Documents	8 July 2010
Addendum No. 01 – ARCH	4 August 2010
Addendum No. 02 – MEP	4 August 2010
Addendum No. 03 – CIVIL	5 August 2010

4. This Addendum consists of: two (2) 8-1/2x11 written pages; two (2) attached full-size sheets **C2.04R1 and C3.04R1**; as prepared by Lamb and Barger. Total pages included in this Addendum: 4 pages.

PART B: CHANGES TO PRIOR ADDENDUM

“Any changes to prior issued addendum materials are listed here.”

5. Sheet C2.04R1 Sanitary Sewer and Water Layout: Added an 8 inch water line loop and three fire hydrants around the Maintenance Building and Maintenance Shops.
6. Sheet C2.04R1 Sanitary Sewer and Water Layout: Added a 6 inch water line and fire hydrant at the existing Transportation Building.

7. Sheet C2.04R1 Sanitary Sewer and Water Layout: Added two 2 inch reduced pressure backflow preventers at the new meter locations.
8. Sheet C2.04R1 Sanitary Sewer and Water Layout: Added external drop structures at the two sanitary sewer manhole connections.
9. Sheet C2.04R1 Sanitary Sewer and Water Layout: Changed the sanitary sewer from 4 inch to 6 inch at the New Transportation Building.
10. Sheet 3.04R1 Storm Sewer, Sanitary Sewer and Water Layout: Added a 6 inch water line and fire hydrant at the New Ag Building.

PART C: CHANGES TO THE PROJECT MANUAL

11. None

PART D: CHANGES TO THE DRAWINGS

12. None

PART E: RE-ISSUED SHEETS

13. None

END OF ADDENDUM

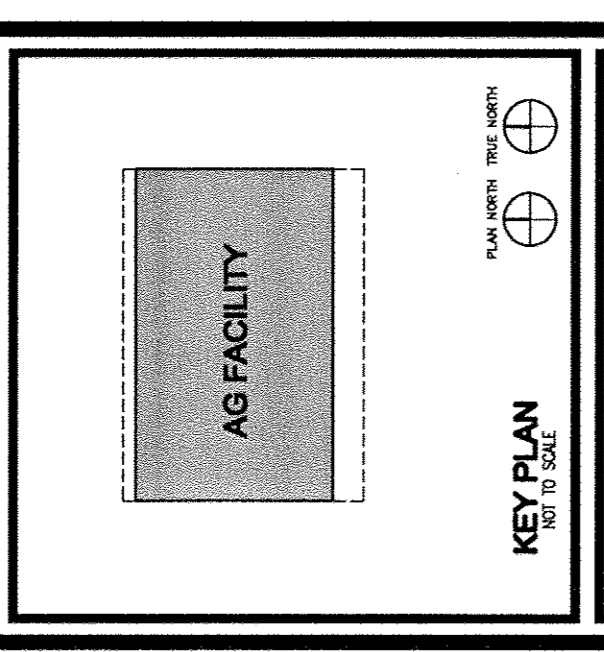
CONSULTANTS

CH2M
Lamb & Barger Consulting Eng.
Houston, TX 77079
(281) 467-2000
(281) 467-2001
MEP

KVUE
10820 W. Sam Houston Parkway N., Suite 800
Houston, TX 77068
(281) 864-1900
(281) 864-9121

Structure
Concept Engineers
17110 West Loop South, Suite 100
Houston, Texas 77060
(713) 868-6261
(713) 868-6262

MECHANICAL
MILITARY ASSOCIATES INC.
21850 Tropic Drive
Spring, Texas 77389
(281) 350-7788
(281) 350-8881

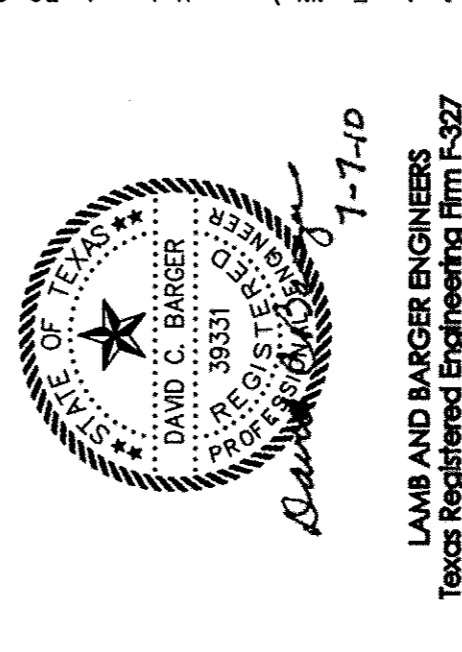


Channelview Independent School District

Package 'B'

New Transportation, Maintenance & Agricultural Buildings

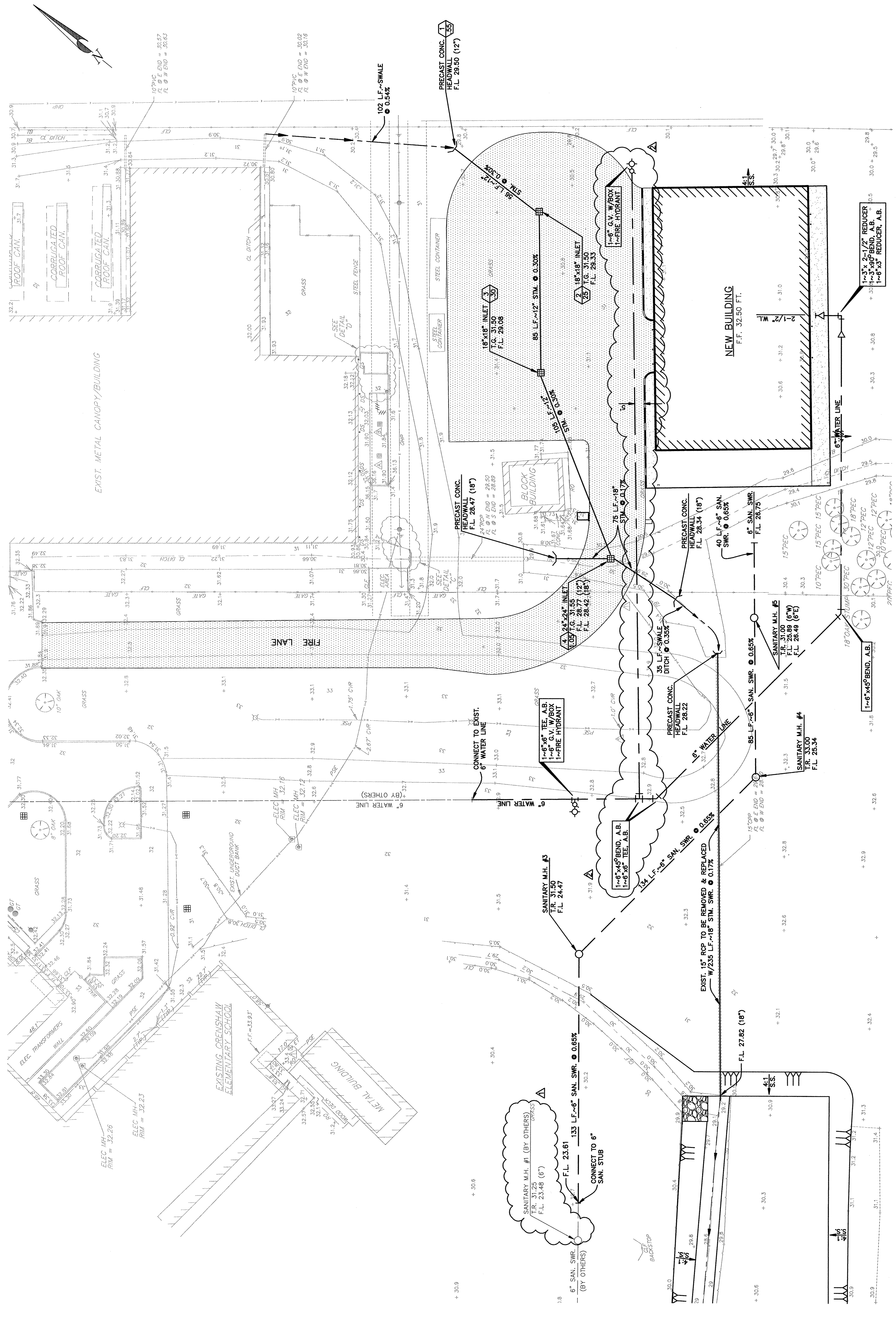
BAY ARCHITECTS
1801 GULF FREEWAY
P.O. BOX 90139
HOUSTON, TEXAS 77299
281.284.6665



PROJECT NO. 0837	DATE	ISSUE
DATE	08/05/10	Addendum 03
DRAWN	08/11/10	Addendum 04
CHECKED		

STORM SEWER, SANITARY SEWER AND WATER LAYOUT

C3.04R1



LEGEND

	STORM SEWER W/INLET
	SANITARY SEWER W/MANHOLE
	WATER LINE W/FIRE HYDRANT
	TOP OF RIM
	FLOW LINE
	GATE VALVE
	FIRE HYDRANT
	FIRE DEPT. VALVE
	FIRE DEPT. CONNECTION
	TAPPING SLEEVE AND VALVE
	ALL BELL

SCALE: 1"=20'

STORM SEWER, SANITARY SEWER AND WATER LAYOUT

- NOTES:**
- OWNER TO CONTACT REN NELSON IN "TAPPING AND INSPECTIONS" WITH MUNICIPAL DISTRICT SERVICE AT 281-290-6500 TO MAKE APPLICATION FOR SERVICE AND PAY TAP FEES BEFORE CONNECTION CAN BE MADE TO HARRIS COUNTY WOOD 84 LINES IN ACCORDANCE WITH THE DISTRICTS "AMENDED AND RESTATED RATE ORDER."
 - CONTRACTOR TO CONTACT REN NELSON AT MUNICIPAL DISTRICT SERVICE AT 291-290-6500 AT LEAST 48 HOURS IN ADVANCE OF CONSTRUCTION. DO NOT BACKFILL LINES WITHOUT INSPECTION BY MUNICIPAL DISTRICT SERVICES.
 - THE SANITARY SEWER LINES SHALL BE MINIMUM 6 INCH PVC SDR 26 OR PVC C900 PIPE AT MINIMUM 0.5% GRADE.
 - ANY CONNECTION TO DISTRICTS SANITARY LINES SHALL BE COORDINATED WITH DISTRICT OPERATOR. NO CONNECTION SHALL BE MADE UNLESS OPERATOR FOR DISTRICT IS PRESENT.
 - THE WATER SERVICE LINES SHALL BE MINIMUM 4 INCH PVC SDR 26 OR SCHEDULE 40 PIPE.
 - DISTRICT OPERATOR WILL TAP DISTRICT LINE AND SET NEW WATER METER AS REQUIRED. OWNER WILL CONNECT TO DISTRICT METER AND RUN LINES WITHIN PROJECT.