



8. Table of Contents: page 6, item IV. Index of Drawings, Civil – New Agricultural Building; add the following:  
C3.01 Harris County Public Infrastructure Dept. Express Review Sheet
9. Table of Contents: page 6, item IV. Index of Drawings, Structural; revise the second S0.3 sheet name to read:  
S0.4 Typical CMU Details
10. Table of Contents: page 7, item IV. Index of Drawings, Architecture; revise the following sheet to read:  
A2.04 Maintenance Area “B” Schedules
11. Table of Contents: page 7, item IV. Index of Drawings, Architecture; revise the following sheet to read:  
A6.08 Wall Sections – Agricultural Facility
12. Table of Contents: page 7, item IV. Index of Drawings, Architecture; delete the following:  
A6.10 Wall Sections – Agricultural Facility
13. Table of Contents: page 7, item IV. Index of Drawings, Architecture; revise the following sheets to read:  
A7.02 Exterior and Interior Elevations  
A7.03 Exterior Elevations Agricultural Facility
14. Table of Contents: page 7, item IV. Index of Drawings, Architecture; add the following sheets:  
A9.01 Door and Window Details  
A9.02 Door and Window Details
15. Section 04200 Unit Masonry: page 3, Section 2.2 Materials, Item A.01, delete in its entirety and replace with the following:  
01 Brick Type “A” – Acme “Roxbury”
16. Section 09750 Seamless Epoxy Flooring: Add this section in its entirety (4 pages)

**PART D: CHANGES TO THE DRAWINGS**

17. Sheet C1.03 Enlarged Site Plan: Revise 4/C1.03 to show 18’-0”x18’-6” aluminum walkway cover at loading dock as shown on attached sketch **ADD-01-01**.
18. Sheet C1.03 Enlarged Site Plan: Revise 16/C1.03 to show aluminum walkway cover at 12’-8” A.F.F. as shown on attached sketch **ADD-01-01**.
19. Sheet C1.04 Enlarged Site Plan: Add and revise dimension text on 20/C1.04 as shown on attached sketch **ADD-01-02**.
20. Sheet C1.04 Enlarged Site Plan: Add aluminum walkway footing detail 28/C1.04 as shown on attached sketch **ADD-01-03**.
21. Sheet A2.01 Transportation Floor Plan & Schedules: Finish Schedule, Floor and Base; revise ceramic tile to epoxy flooring.
22. Sheet A2.04 Maintenance Area “B” Schedules: Finish Schedule, Floor and Base; revise ceramic tile to epoxy flooring

23. Sheet A7.01 Exterior Elevations: Revise west elevation at canopy, enlarging canopy length as shown on attached sketch **ADD-01-04**.
24. Sheet A7.01 Exterior Elevations: Revise south elevation 3/A7.02, showing overhead walkway cover as shown on attached sketch **ADD-01-05**.
25. Sheet A10.02 Reflective Ceiling Plan – Areas A & B: Revise 6/A10.02, canopy has been extended as shown on attached sketch **ADD-01-06**.

**PART E: RE-ISSUED SHEETS**

26. None

**END OF ADDENDUM**

## SECTION 09750

### SEAMLESS EPOXY FLOORING

*(ADDED IN ADDENDUM NO. 1)*

CONDITIONS OF THE CONTRACT, SUPPLEMENTARY CONDITIONS AND DIVISION 1 APPLY TO THIS SECTION.

#### PART 1 - GENERAL

##### 1.1 DESCRIPTION OF WORK

- A. Furnish and install the decorative epoxy flooring and integral base system as specified and indicated.
  - 01 The term “seamless epoxy flooring system” as used in this section will include the primers, resin systems and aggregate materials, topcoats, cove base materials, and any related materials for the project.
  
- B. Related Work:
  - 01 Section 03300 – Cast-In-Place Concrete
  - 02 Section 09310 – Ceramic Tile

##### 1.2 REFERENCES:

- A. Society for Protective Coatings (SSPC) Specifications and Standards:
  - 01 SPC-PA-3: “A Guide to Safety in Paint Application”.
  - 02 SSPC-SP-13: “Surface Preparation of Concrete”.
  
- B. NACE (National Association of Corrosion Engineers)
  - 01 NACE Publication 6D-173, “A Manual for Painter Safety”.
  - 02 NACE Publication 6G-164, “Surface Preparation Abrasives for Industrial Maintenance Painting”.
  
- C. ASTM (American Society for Testing and Materials)
  - 01 ASTM D4541 - L.R. “Standard Method for Pull-Off Strength of Coatings using Portable Adhesion Testers”.
  - 02 ASTM E337 - L.R. “Standard Practice Test Method for Measuring Humidity with a Psychrometer”.
  - 03 ASTM D4263-83 (1999), “Standard Test Method for Indicating Moisture in Concrete by the Plastic Sheet Method”.
  - 04 ASTM F1869-98, “Standard Test Method for Measuring Moisture Vapor Emission Rate of Concrete Subfloor Using Anhydrous Calcium Chloride”.
  - 05 ASTM D4414-95, “Standard Practice for Measurement of Wet Film Thickness by Notched Gages”.
  - 06 ICRI Guide No. 03732, “Selecting and Specifying Concrete Surface Preparation for Sealers, Coatings and Polymer Overlays,” International Concrete Repair Institute, Sterling, VA.
  - 07 ASTM 4262, “Standard Test Method for Measuring Surface pH of Acid Etched Concrete”.
  - 08 ASTM D4259, “Standard Practice for Abrading Concrete”.

### **1.3 QUALITY ASSURANCE**

- A. The Contractor shall meet the following requirements:
  - 01 Installation shall be performed by an applicator having 5 years experience in the application of these or similar materials. The manufacturer's representative shall be available to consult with the installer and the Architect as needed.
  - 02 An inspection of the first 100 SF of the installation shall be inspected by the manufacturer's representative. Notify the Architect 24 hours prior to this inspection.
  - 03 The manufacturer's representative shall make a final inspection of the work and report any deficiencies to the Architect.
  - 04 Use only products of the approved manufacturer. Provide the same products for repairs as for the original coating.

### **1.4 SUBMITTALS**

- A. Manufacturer's current product data sheets for all seamless epoxy flooring system products including performance criteria, surface preparation and applications, volatile organic compound (V.O.C.) data, and safety requirements.
- B. Material Safety Data Sheets (MSDS) for any materials brought on-site including all coating system materials, solvents, and abrasive blast media.
- C. Contractor's written verification that the personnel who will perform this work have the required experience as specified in 1.05 1.9. This document must list the names of all of the Contractor's supervisors and trades people who will work on the project covered by this Section.
- D. Samples: 12" x 12" samples of actual finishes / colors available from the manufacturer.
- E. Installation Instructions: Manufacturer's installation instructions for this application.
- F. Maintenance Instructions: Manufacturer's maintenance instructions for this application.

### **1.5 DELIVERY, STORAGE, AND HANDLING**

- A. Material shall be delivered to project site in manufacturer's original unopened containers.
- B. Materials shall be stored indoors, protected from damage, moisture, direct sunlight and temperatures below 40 degrees F or above 90 degrees F.
- C. Do not use drain piping for disposal of coating materials.
- D. The Contractor shall take all precautions and implement all measures necessary to avert potential hazards associated with the seamless epoxy flooring system materials.
- E. Deliver all materials to the job site in new, unopened containers. Each container shall bear the manufacturer's name and label.

### **1.6 ENVIRONMENTAL CONDITIONS**

- A. Surfaces and surrounding air temperatures must exceed 55 degrees F, but must be less than 90 degrees F, with materials at not less than 70 degrees F during application.
- B. Do not apply coating materials when dust is being generated.

- C. If existing facility lighting is not adequate for flooring system application, the Contractor shall provide all temporary lighting during the work equivalent to one 200 watt explosion proof incandescent lamp per 100 square feet of work area.

## **PART 2 - PRODUCTS**

### **2.1 MATERIALS**

- A. Laminate Resinous Flooring: Design is based on Polyspec (DL-2 TuffRez Decorative Quartz Broadcast System). Color as selected by Architect. See drawings for locations. Substitutions as approved by Architect prior to receipt of proposals.
- B. Prime with Series 201 when Series 222 is installed as a slurry broadcast. Apply Series 201 in this case at 6 to 8 dry mils.
- C. Finish Coat: Series 285 Satinglaze, a two-component, polyamine cured epoxy finish. Provides a satin finish and orange peel texture.
- D. Install 4" integral, seamless base with metal top cap.

### **2.2 MANUFACTURERS**

- A. Polyspec (DL-2 TuffRez Decorative Quartz) (Basis of design)
- B. General Polymers Ceramic Carpet #425 Flooring System
- C. Dex-O-Tex Décor-Flor Broadcast
- D. Key Resin Company (Key Quartz B-195 system)
- E. Requests for substitutions must be accompanied by samples of proposed materials to match specific products indicated on drawings.

## **PART 3 - EXECUTION**

### **3.1 GENERAL**

- A. Protection: Mask, cover, or otherwise protect all surfaces, equipment, and finishes not to receive the decorative epoxy flooring system specified in this Section.
- B. Strictly follow the approved manufacturer's written instructions and the requirements of this specification regarding all aspects of decorative epoxy flooring work including: mixing, application, recoat times and curing.
- C. Mock-up: Prior to commencing the installation, the Contractor shall install with the owner's approval, a mutually agreed upon mock-up test sample 3' X #' to show final color and appearance of the decorative epoxy flooring system. It is the intent of the Specifications to have a Satin finish rather than a gloss finish.

### **3.2 PREPARATION**

- A. Allow new concrete to cure for a minimum of 30 days. Verify dryness by testing for moisture with a "plastic film tape-down test". (Reference ASTM D4263)
- B. Shot-blast or mechanically abrade to remove laitance, curing compounds, sealers and other contaminants and to provide surface profile. (Reference ASTM D4259, ICRI CSP 4-6).
- C. Vacuum clean concrete to remove all dirt, dust, and other loose materials.

- D. After mechanically abrading, verify that all surfaces are clean, dry and free of any contaminants, which could adversely affect the adhesion of the flooring system.
- E. If between final surface preparation work and decorative epoxy flooring system application, contamination of the prepared and cleaned substrates occurs, re-cleaning shall be required until the requirements of this Section are met.

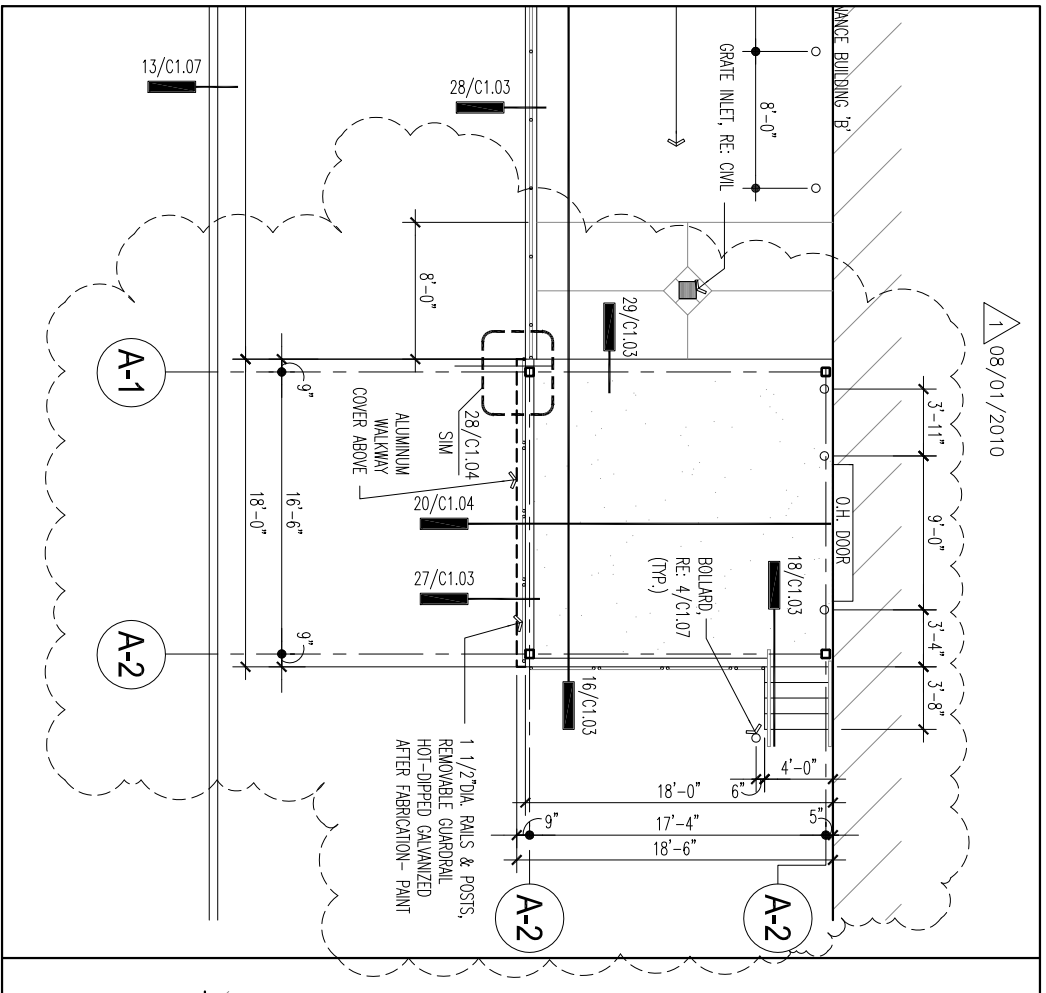
### **3.3 INSTALLATION**

- A. For Slurry Broadcast Application: The primer shall be mechanically mixed, applied and cured in strict accordance with manufacturer's printed instructions. Apply uniformly at a film thickness of 6 to 8 dry mils.
- B. Decorative Laminate Epoxy Resinous Flooring: The material shall be mixed, applied and cured in strict accordance with the manufacturer's printed instructions. Apply by double broadcast (self-priming) or slurry broadcast to a minimum of 3/16" thickness.
  - 01 Floor and wall transitions shall be formed to have a rolled radius cove base, providing a seamless wall to floor transition.
- C. Top Coat: The high-solids, epoxy glaze coat shall be mechanically mixed, applied and cured in strict accordance with manufacturer's printed instructions. Apply at a film thickness of 6 to 12 dry mils. Skid resistance properties can be adjusted by the film thickness and number of topcoats and should be determined at the time the mock-up is completed.
- D. Finish Coat Series 285 The high-solids, orange-peel, epoxy finish coat shall be mechanically mixed, applied and cured in strict accordance with manufacturer's printed instructions. Apply at a film thickness of 4 to 6 dry mils.

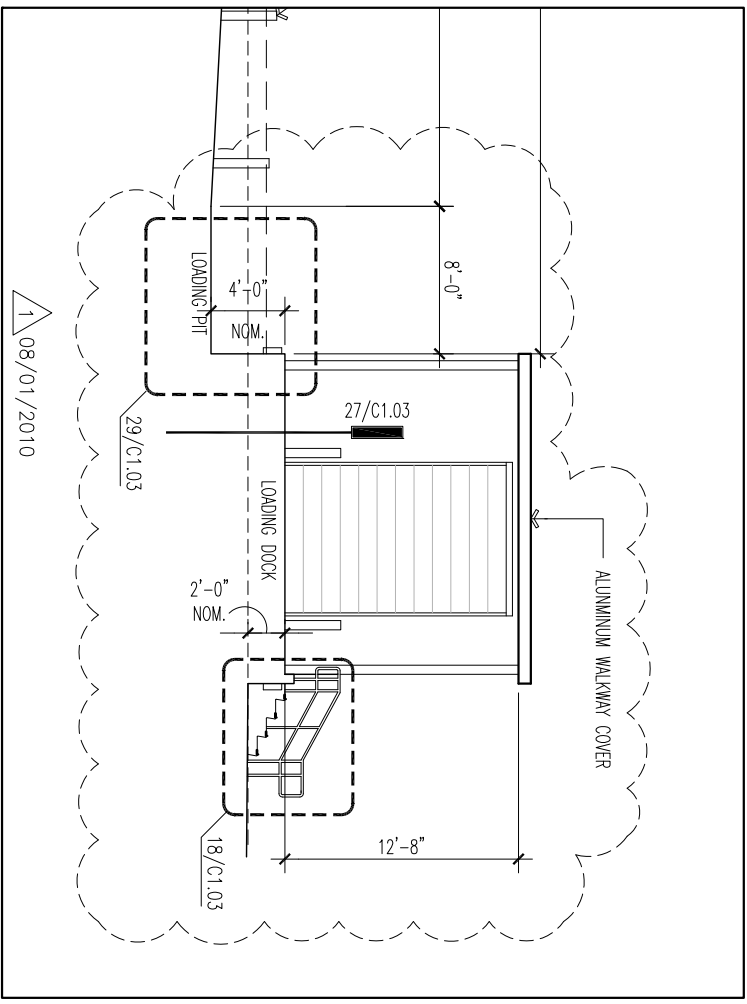
### **3.4 CLEANUP AND PROTECTION**

- A. Remove waste materials, rubbish, and debris and dispose of them at the owner's direction. Leave work areas in a clean and tidy condition.
- B. Protect the completed work from water, airborne particles or other surface contaminants until cured for a minimum of 24 hours after application.
- C. Protect from traffic, physical abuse, immersion and chemical exposure until the complete system has thoroughly cured for 24 hours at 75 degrees F. For different temperatures, consult the manufacturer's representative about curing times.
- D. Arrange / schedule final inspection(s) by the manufacturer's representative to verify that all work has been installed correctly and in accordance with the manufacturer's standards and recommendations. Provide written report(s).

**END OF SECTION**



4/C1.03



16/C1.03

DETAIL



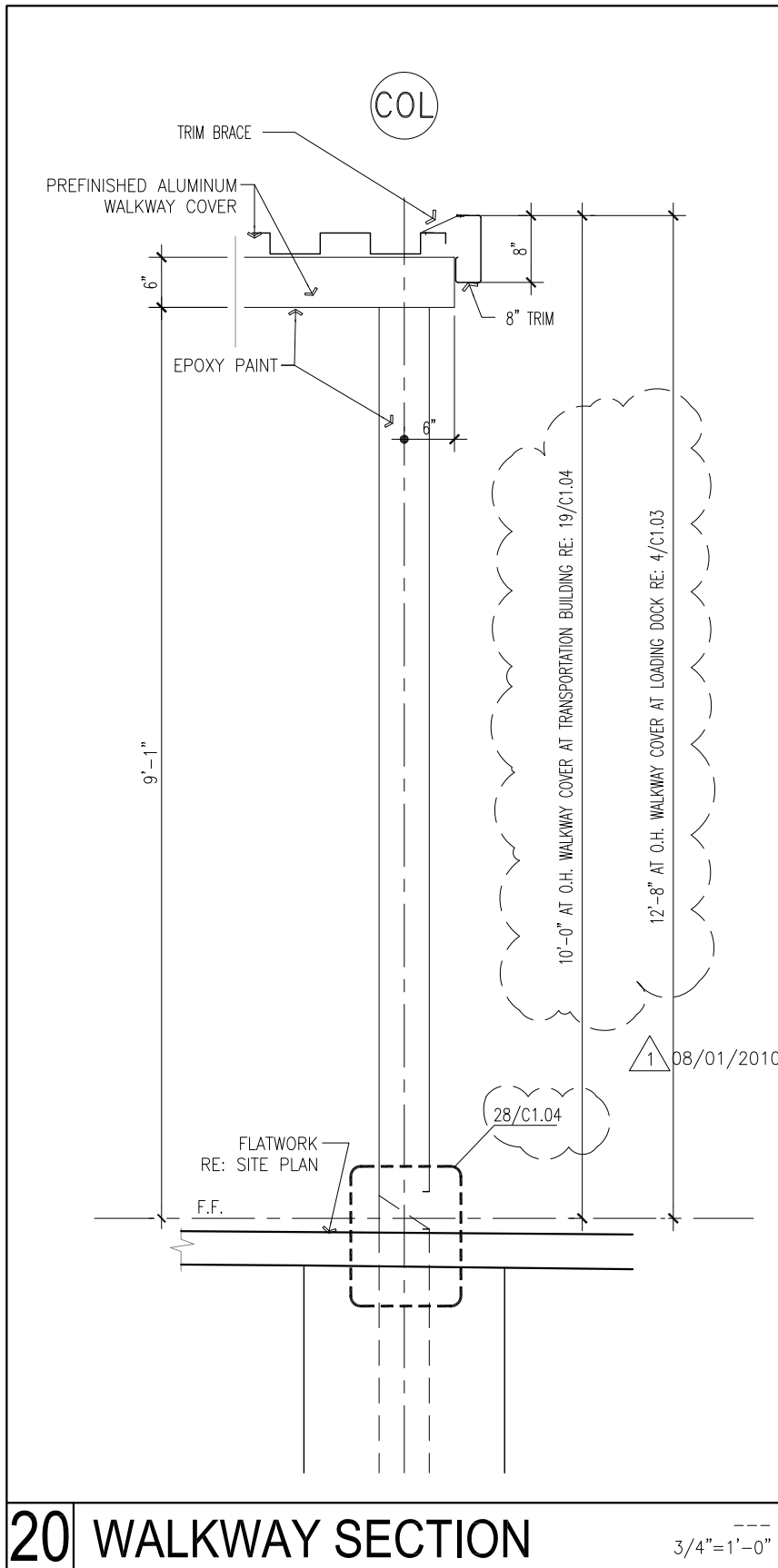
**BAY ARCHITECTS**

18201 GULF FREEWAY  
 P.O. BOX 891209  
 HOUSTON, TEXAS 77289  
 281.286.6005

Package 'B' New Transportation, Maintenance & Agricultural Buildings  
 CHANNELVIEW, I.S.D.

ADD-01-01

0937  
 NTS  
 08/01/2010  
 0806



**20** WALKWAY SECTION

---  
3/4" = 1'-0"

## SECTION DETAIL



**BAY ARCHITECTS**

18201 GULF FREEWAY  
P.O. BOX 891209  
HOUSTON, TEXAS 77289  
281.286.6605

Package 'B' New Transportation, Maintenance & Agricultural Buildings  
CHANNELVIEW I.S.D.

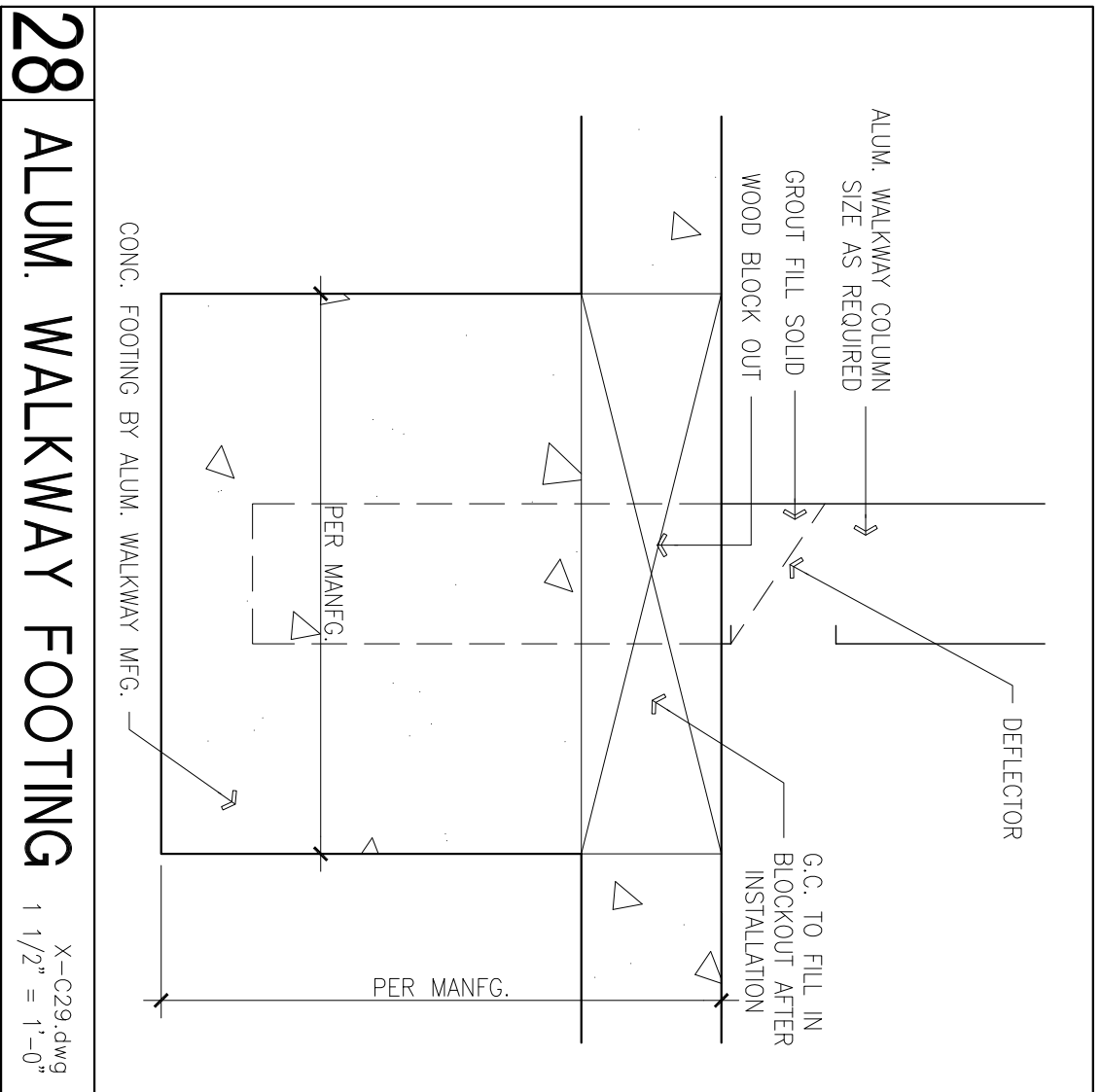
ADD-01-02

0937  
Not To Scale  
08/01/2010  
C1.04



**BAY ARCHITECTS**

18201 GULF FREEWAY  
P.O. BOX 891209  
HOUSTON, TEXAS 77289  
281.286.6605



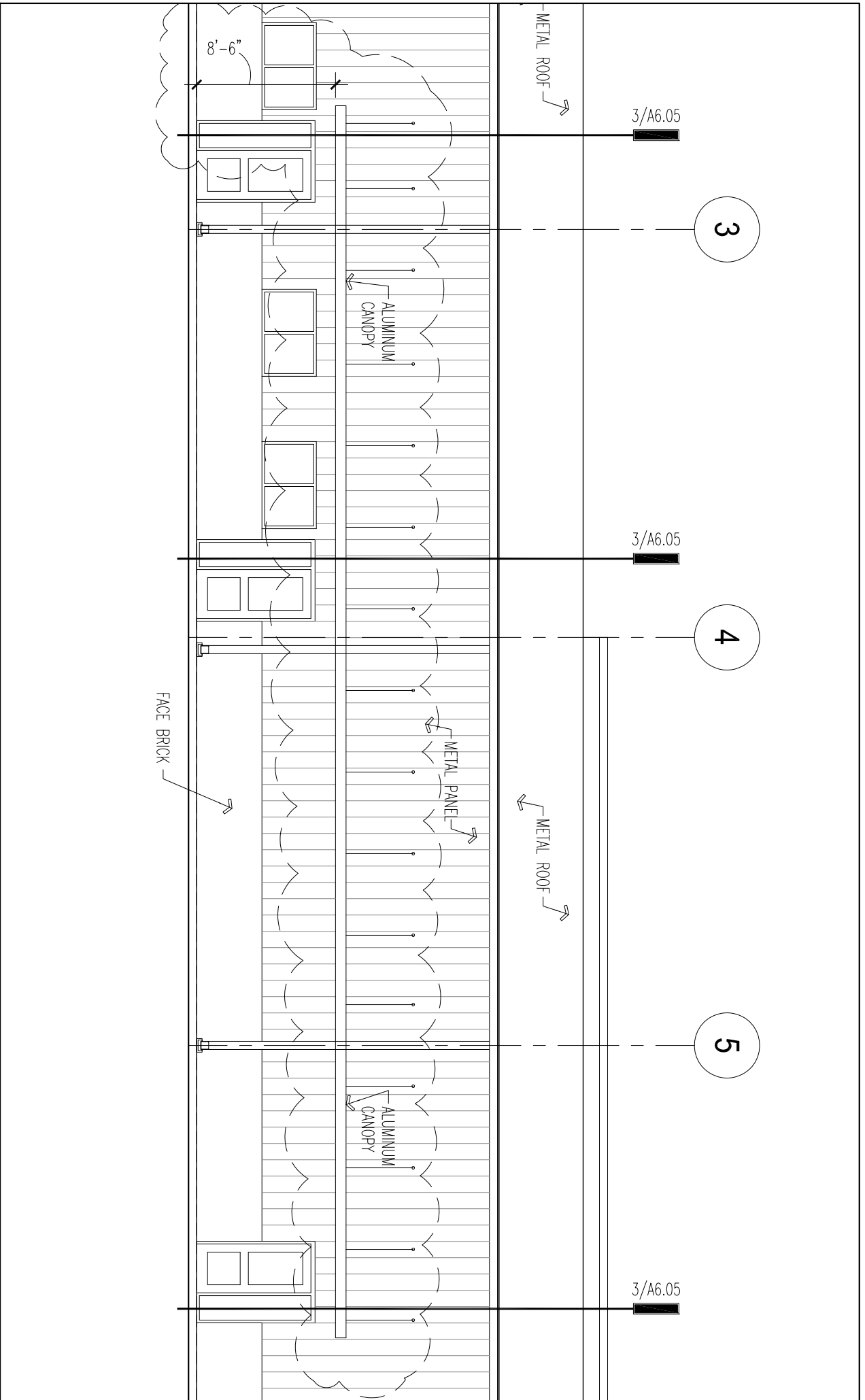
**28 ALUM. WALKWAY FOOTING**

X-C29.dwg  
1 1/2" = 1'-0"

**DETAIL**

Package 'B' New Transportation, Maintenance & Agricultural Buildings  
CHANNELVIEW I.S.D.

ADD-01-03  
0937  
1/8"=1'-0"  
08/01/2010  
C1.04



# ELEVATION-6/A7.01



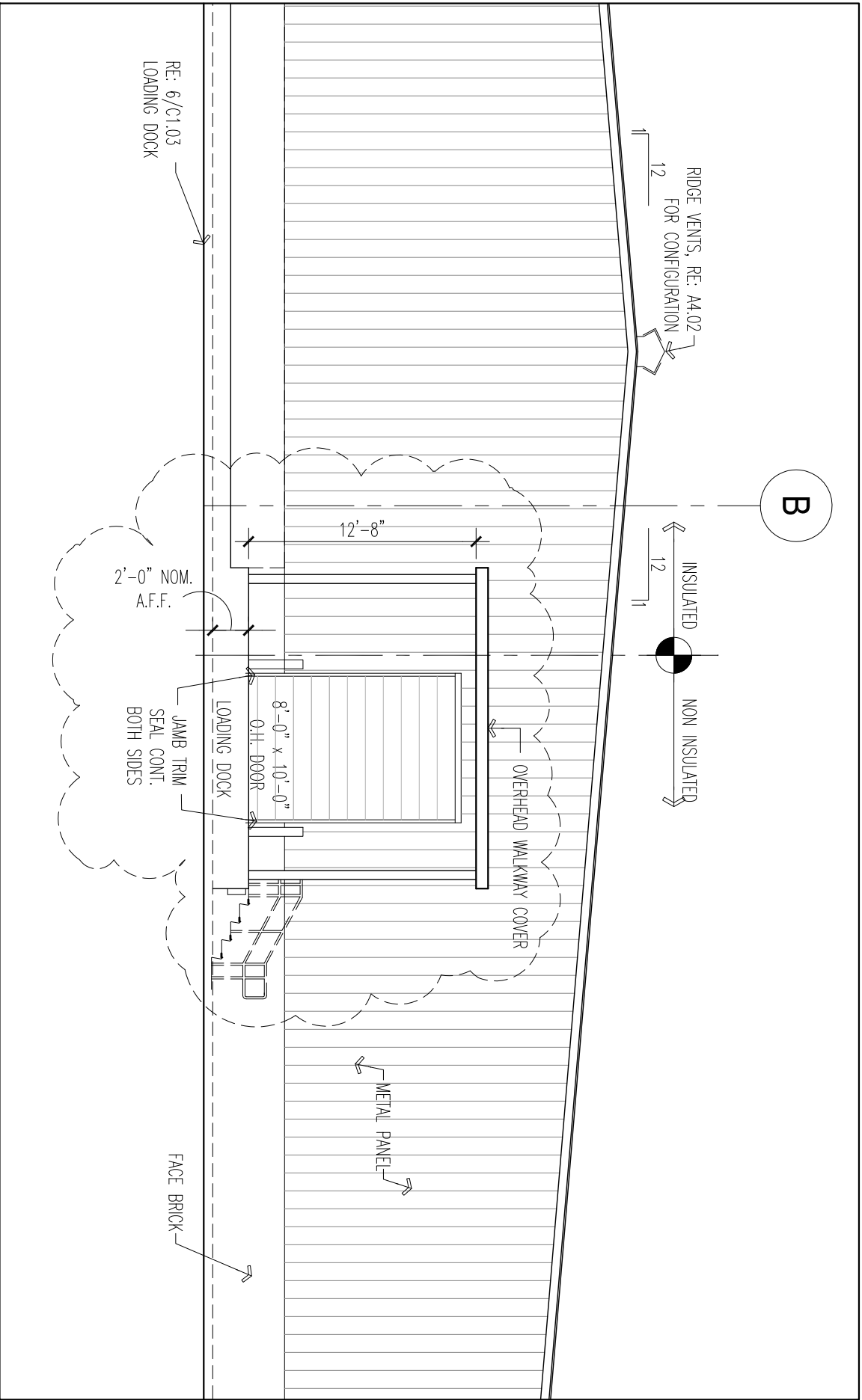
**BAY ARCHITECTS**

18201 GULF FREEMWAY  
 P.O. BOX 891209  
 HOUSTON, TEXAS 77289  
 281.286.6005

Package 'B' New Transportation, Maintenance & Agricultural Buildings  
 CHANNELVIEW, I.S.D.

ADD-01-04

0937  
 1/8"=1'-0"  
 08/01/2010  
 0806

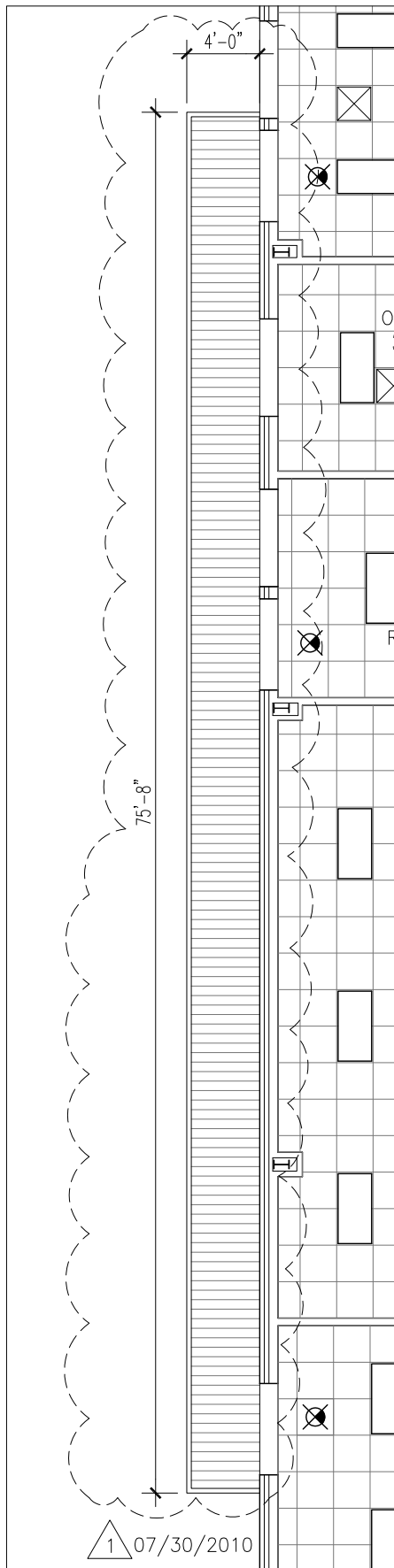


# ELEVATION-3/A7.02



**BAY ARCHITECTS**  
 18201 GULF FREEWAY  
 P.O. BOX 891209  
 HOUSTON, TEXAS 77289  
 281.286.6005

Package 'B' New Transportation, Maintenance & Agricultural Buildings  
 CHANNELVIEW, I.S.D.  
 ADD-01-05  
 0937  
 1/8"=1'-0"  
 08/01/2010  
 0806



## 6/A10.02- REFLECTED CEILING PLAN



**BAY ARCHITECTS**  
 18201 GULF FREEWAY  
 P.O. BOX 891209  
 HOUSTON, TEXAS 77289  
 281.286.6605

Package 'B' New Transportation, Maintenance & Agricultural Buildings  
 CHANNELVIEW I.S.D.

ADD-01-06  
 0937  
 Not To Scale  
 08/01/2010  
 C1.04