



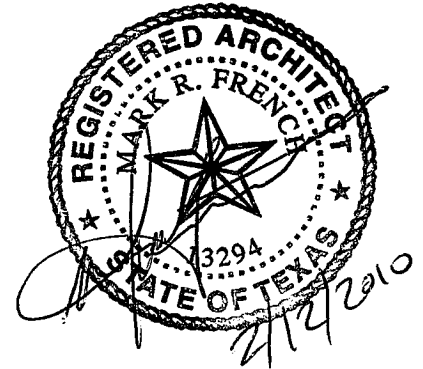
Bay Architects
 18201 Gulf Freeway
 Post Office Box 891209
 Houston, Texas 77289
 Tel 281.286.6605
 Fax 281.286.9606

ADDENDUM NO. 08

February 12, 2010

Project: **Package C – 2009: Holbrook Elementary School Renovations**
 Cypress-Fairbanks Independent School District

Prepared by: Bay Architects, Inc.
 18201 Gulf Freeway
 Webster, Texas 77598
 Post Office Box 891209
 Houston, Texas 77289
 (281) 286-6605



Bay Project No.: 0840 (10-01-2069R-FP)

Prepared for: Prospective Proposers

PART A NOTICE TO PROPOSERS

01. Receipt of this Addendum shall be acknowledged on the Proposal Form. Failure to do so may subject Proposers to disqualification. Each Proposer shall make necessary adjustments and submit his proposal with full knowledge of all modifications, clarification, and supplemental data included therein.
02. This Addendum forms part of the Contract Documents and shall be incorporated integrally therewith. Where provisions of the following supplemental data differ from those of previously issued documents, this Addendum shall govern.
03. The following Contract Documents have been issued to date delineating the Work (Project):

Construction Documents	January 20, 2010
Addendum 01	February 2, 2010
Addendum 02	February 2, 2010
Addendum 03	February 2, 2010
Addendum 04	February 5, 2010
Addendum 05	February 5, 2010
Addendum 06	February 9, 2010
Addendum 07	February 11, 2010
04. This Addendum consists of ADD8-1 through ADD8-4, and sketches ADD8-SKE-1 through ADD8-SKE-3 and ADD8-SKP-1 through ADD8-SKP-4.

PART B CHANGES TO PRIOR ADDENDA

05. None

PART C CHANGES TO THE PROJECT MANUAL

06. Section 15650 – Mechanical Equipment
 - a. Paragraph 2.04, Air-Cooled Rotary Chiller, Item L: Add York to list of acceptable manufacturer.

PART D

CHANGES TO THE DRAWINGS

"Changes may be indicated on the enclosed 8-1/2 x 11 and/or 11" x 17" sheets."

07. Sheet MEP 1.0 – MEP Site Plan
 - a. Run 1" conduit from water meter to building for EMS cable.
08. Sheet M1.1D – Mechanical Demolition Floor Plan
 - a. Classroom H152: Disconnect and remove existing TU-7 and associated ductwork serving the Computer Room. Cap inlet taps serving this unit.
09. Sheet M1.4 – Mechanical Floor Plan – Area E
 - a. Classroom D611: Relocate existing temperature sensor for TU-4 as required to accommodate new wall cabinets.
10. Sheet E1.1 – Lighting Floor Plan – Area A
 - a. Men's A113: Change Light Fixture from Type A2X to Type A2SX.
 - b. Women's A115: Change one light fixture from Type A2X to Type A2SX and the other from Type A2 to Type A2S.
 - c. Add two Type U light fixtures to columns outside main entrance to Lobby A100. Also add two type T light fixtures and connect all four additional fixtures to relay RG-36 on 277V circuit HG-13. See attached Drawing ADD8-SKE-01.
11. Sheet E1.2 – Electrical Floor Plan – Area A
 - a. Lounge A116 – Reference Architectural Detail 7/A8.01 for mounting height of microwaves prior to rough-in.
 - b. Reception A120: Circuit ELG-25 has changed to ELG-6 and Circuit ELG-27 changed to ELG-8.
12. Sheet E1.3 – Lighting Floor Plan – Area B
 - a. Boys B215: Change one of three Type A2X light fixtures to Type A2SX and connect to Type A2SX fixture at entry to same room. There should then be two Type A2S fixtures and two Type A2SX fixtures in this room.
 - b. Girls B217: Change one of three Type A2X light fixtures to Type A2SX and connect to Type A2SX fixture at entry to same room. There should then be two Type A2S fixtures and two Type A2SX fixtures in this room
13. Sheet E1.7 – Lighting Floor Plan – Area D
 - a. Storage D504A: Change Type A2SX light fixture to Type A2X
14. Sheet E1.8- Electrical Floor Plan – Area D
 - a. Temp Workroom: Add electrical and data outlets. See Attached Drawing ADD8-SKE-02.
 - b. Temp Reception D608: Add (1) one phone outlet on south wall. See Attached Drawing ADD8-SKE-03.
15. Sheet E1.10 – Electrical Floor Plan – Area E
 - a. Custodial E702: Add a heat detector in this room.
16. Sheet E1.11 – Security Floor Plan
 - a. Electrical Legend & Symbol: Change symbol for card reader from "CA" to "CR".
17. Sheet E4.1 - Low Voltage Lighting Relay Panel Schedules:
 - a. Relay Panel RF2: Add the Following Note:
 - b. "Run 3-10, ¾"C from each of Relay circuits RF2-35 and RF2-36 to existing Panel HB to serve existing outdoor light poles."
 - c. Relay Panel RG: Add the Following Note:
 - d. "Run 3-10, ¾"C from each of Relay circuits RG-46 and RG-47 to existing Panel HB to serve existing outdoor light poles."

18. Sheet E5.0 – Electrical Symbols, Fixture Schedules and Details
- a. Light Fixture Schedule: Light fixture submitted by Putterman, Scharck & Associates, Inc is acceptable except type G/GX shall have Fresnel lens. Type V/VX shall have screw on bottom of fixture. Also, lighting supplier shall submit photo metric to show type W/WX can provide same lighting level as specified fixture. Acceptance Does Not Amend The Contract Documents Nor Relieve The Contractor of Compliance With Them.
 - b. Light Fixture Schedule: Light fixture submitted by Bell & McCoy, Inc is acceptable except type M shall be manufactured by Kim Lighting or equal. Type V/VX shall have screw on bottom of fixture. Also, lighting supplier shall submit photo metric to show type W/WX can provide same lighting level as specified fixture. Acceptance Does Not Amend The Contract Documents Nor Relieve The Contractor of Compliance With Them.
 - c. Add Light Fixture Types T and U to Light Fixture Schedule. See attached Drawing ADD8-SKE-01.
19. Sheet P2.1 – Plumbing Floor Plan – Area B
- a. Pre-K B201: Revise classroom sink type to type “SK-6”.
 - b. Pre-K B203: Revise classroom sink type to type “SK-6”.
 - c. Pre-K B207: Revise classroom sink type to type “SK-6”.
 - d. Classroom B208: Revise classroom sink type to type “SK-6”.
 - e. Pre-K B209: Revise classroom sink type to type “SK-6”.
 - f. Pre-K B210: Revise classroom sink type to type “SK-6”.
 - g. Pre-K B211: Revise classroom sink type to type “SK-6”.
 - h. Pre-K B212: Revise classroom sink type to type “SK-6”.
 - i. Science B213: Revise both (2) classroom sinks in this room to type “SK-6”.
 - j. Workroom B301: Add clothes washer drain/valve box (WBOX) for new clothes washing machine per Drawing ADD8-SKP1.
20. Sheet P2.3 – Plumbing Floor Plan – Areas D & E
- a. Classroom D605: Add new classroom sink “SK” in new casework per attached Drawing ADD8-SKP2.
 - b. Classroom D611: Add new classroom sink “SK” in new casework per attached Drawing ADD8-SKP3.
 - c. P.E. Vestibule E680: Revise flowline outfall for 6” Storm Sewer to FL = FF – 2.90.
 - d. Mechanical E698: There are 2 new gas pipe penetrations through the roof. Install roof pipe jacks for all piping through roof per Detail 9/P4.0.
21. Sheet P3.0 – ¼” Scale Plumbing Plan Kitchen Area
- a. Add Canwash Hydrant (WH-3) and Canwash drain (CANWASH FD) outside exterior door per attached Drawing ADD8-SKP4.
 - b. Add requirement: When new kitchen is completed, cap existing grease trap sanitary below slab and abandon. Patch floor as required.
 - c. Kitchen Plumbing Connection Schedule: For Connection P14, increase size of CW and HW piping to ¾” CW and ¾” HW.
22. Sheet P4.0 – Plumbing Details and Schedules
- a. Detail 12 – Gas Piping Roof Support Detail: Delete Miro from list of acceptable manufacturers. Provide PHP (Portable Pipe Hangers) Model PP10-R, only. Pipe shall be installed 12” above finished roof per Detail 9/P4.0.
23. Sheet P4.1 – Plumbing Details and Schedules
- a. Detail 1 – Electronic Trap Priming Manifold Detail: For TP-KIT, add canwash floor drain to system to increase total number of drains to 18.
 - b. General Plumbing Notes: For Note 20, reference Details 1/P4.1 and 11/P4.0 for trap primer installation details.
 - c. Plumbing Fixture/Equipment Schedule:

- d. Handicap Art Sink, SK-5: Provide Truebro Basin Guard matching color of casework where millwork knee space screen is not provided.
- e. Add specification for Kindergarten Sink, SK-6:
 Minimum connections – 2” sanitary/vent, ½” CW, ½” HW.
 Headstart Program Sink – single compartment, 18-gauge stainless steel with stainless steel channels, ADA/TAS compliant, faucet ledge on rear of sink, bubbler ledge on right-side of sink, drain in rear-center of bowl, 2 faucet holes in faucet ledge, 1 bubble hole at front of bubble ledge, fully undercoated and sound deadened, 25” x 22” x 4” deep
 Elkay Model DRKAD2522R. Faucet shall be chrome plated, deck mounted with Chicago HA8 swing spout (install in center of faucet ledge), ADA/TAS compliant side valve fitting with high temperature limit and single lever control, completely vandal proof (including aerator), copper supply tubes and certified for meeting all requirements of NSF 61 section 9 Chicago Marathon model 2302-VPC-HA8.
 Bubbler shall be stainless steel ADA/TAS compliant metal bubbler with push-button actuation and vandal-proof anti-rotation kit Elkay Model LKSSVR1141A-VP. 14-gauge stainless steel solids interceptor with internal perforated stainless steel sediment bucket connected to a removable gasketed side access vandal-proof latched lid Mi-Fab MI-SOLID-SA-6 only (install on floor of adjacent cabinetwork to allow easy removal of sediment bucket without conflicting with sink kneespace). Elkay LK-99 drain outlet with heavy-gauge stainless steel body, removable stainless steel basket with locking shell and rubber stopper on bottom. Chrome plated, cast brass, loose key angle stops with chrome plated copper risers. Piping to and from solids interceptor shall be chrome plated 17-gauge cast brass. Install Truebro Handi-Lav Guard white insulation kits on all supply stops and piping exposed in sink kneespace.

24. Sheet P5.0 – Plumbing Riser Diagrams

- a. Area B Risers: There are ten (10) classroom sinks “SK” that need to be revised to type “SK-6” with solids interceptor as described in addendum above.
- b. Riser P/B2: Add clothes washer box (WBOX), 2” waste/vent and ½” CW/HW, as described in addendum above.

25. Sheet P5.1 – Plumbing and Natural Gas Riser Diagrams

- a. Riser PK/3: Add canwash drain and hydrant (CANWASH FD, WH-3), 4” waste and 2” vent and ¾” CW/HW, as described in addendum above.

PART E NEW ISSUED DRAWING SHEETS

“Add these sheets to the Proposal Documents.”

- 26. None

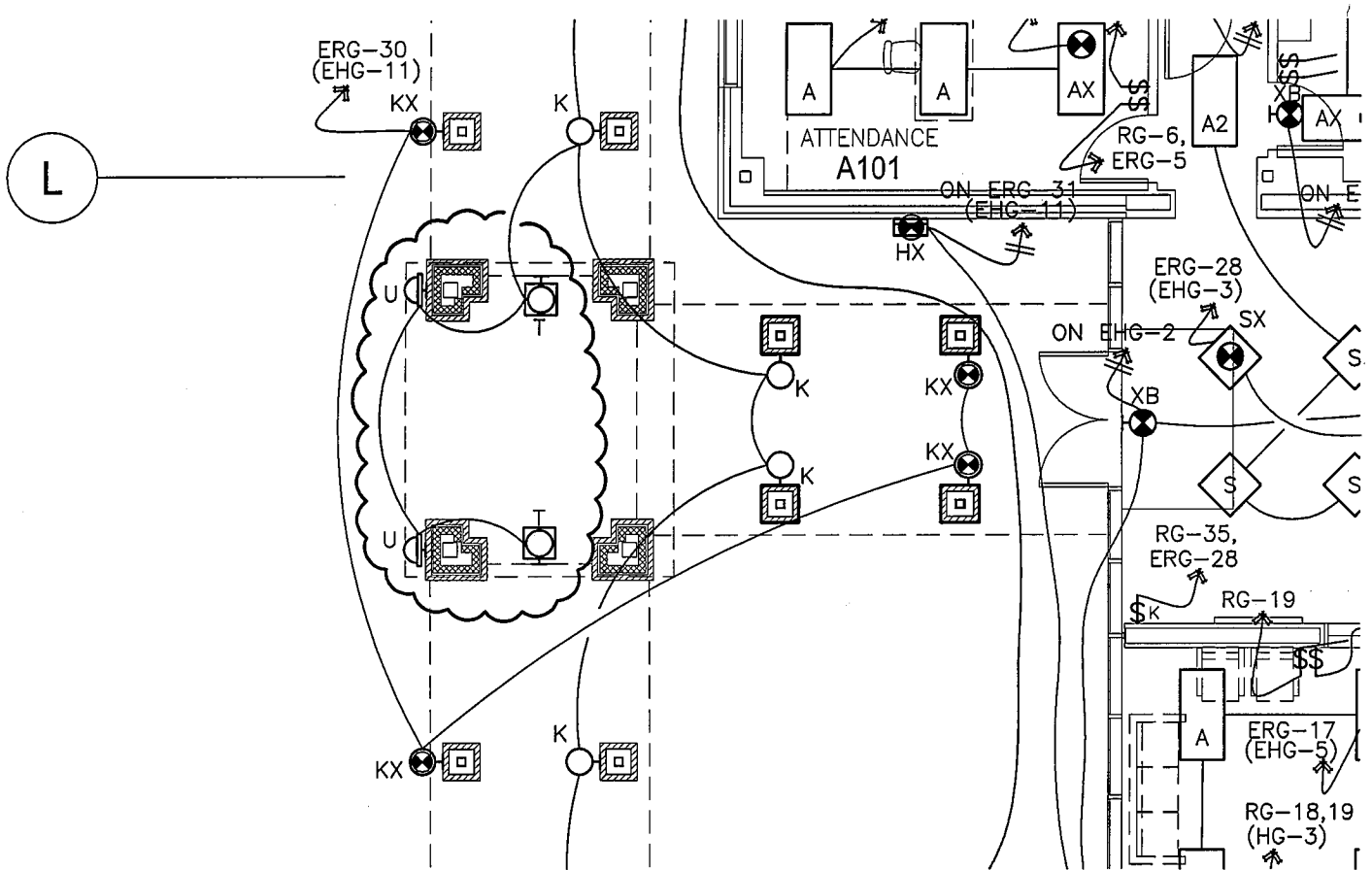
PART F RE-ISSUED DRAWING SHEETS

“Replace these sheets in the Proposal Documents.”

- 27. None

END OF ADDENDUM

LIGHT FIXTURE SCHEDULE	
TYPE	DESCRIPTION
T	WALL MOUNTED UP/DOWN LIGHT, ALUMINUM CYLINDER HOUSING, CLEAR TEMPERED GLASS LENS, SPUN ALUMINUM REFLECTORS, ALUMINUM ARM, STEEL ZINC PLATED BRACKET, COLD WEATHER BALLAST, DARK BRONZE FINISH, 100W MH LAMP, 120V LUMILITE YRW-2-100W/MH-277V-BZ
U	MILLENNIUM FREE SCALE WALL MOUNTED FLUORESCENT FOR HIGH ABUSE ENVIRONMENTS, U.V. STABILIZED, PEARLESCENT 100%DR/ACRYLIC LENS, MARINE GRADE ALUMINUM FRAME WITH THREE BARS - EVEN SPACED, DARK BRONZE FINISH, 2-F32T8 LAMPS, 277V KENALL FS848R-3E-PIA-DB-32-3-277-9500



PARTIAL ELECTRICAL LIGHTING FLOOR PLAN

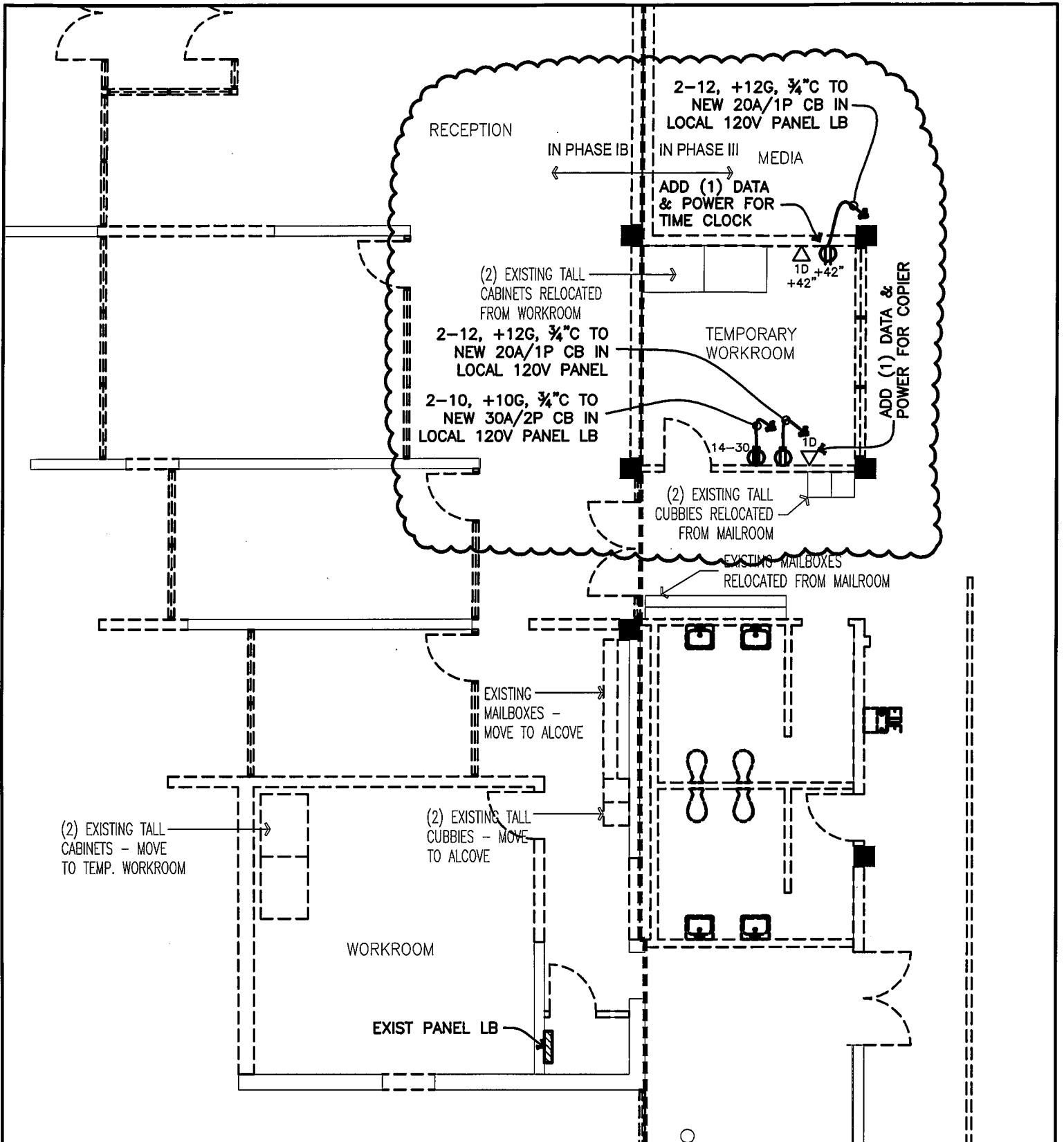


BAY ARCHITECTS

18201 GULF FREEWAY
 P.O. BOX 891209
 HOUSTON, TEXAS 77289
 281.286.6605

ADD8-SKE-01

0832
 SCALE: 1/8" = 1'-0"
 2/12/2010
 RE: E1.1 and E5.0



PARTIAL ELECTRICAL POWER FLOOR PLAN

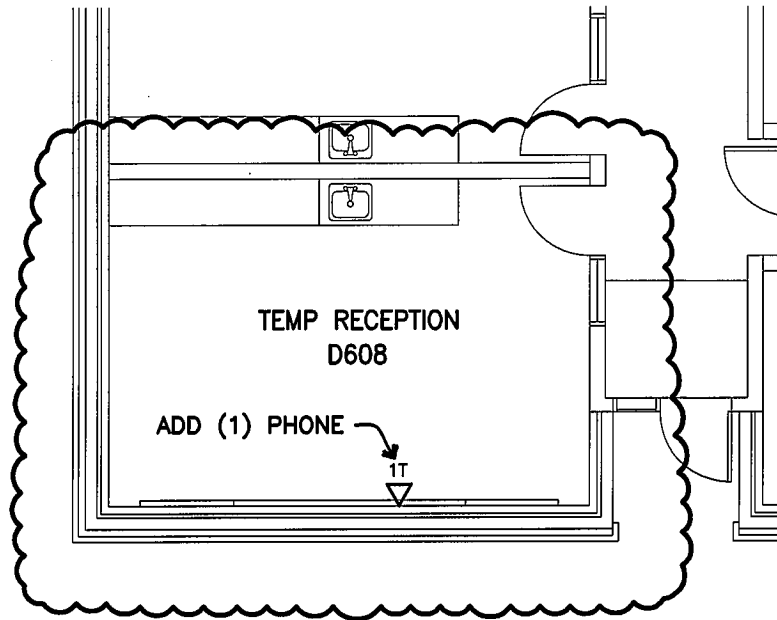


BAY ARCHITECTS

18201 GULF FREEWAY
 P.O. BOX 891209
 HOUSTON, TEXAS 77289
 281.286.6605

ADD8-SKE-02

0832
 SCALE: 1/8" = 1'-0"
 2/12/2010
 RE: E1.8

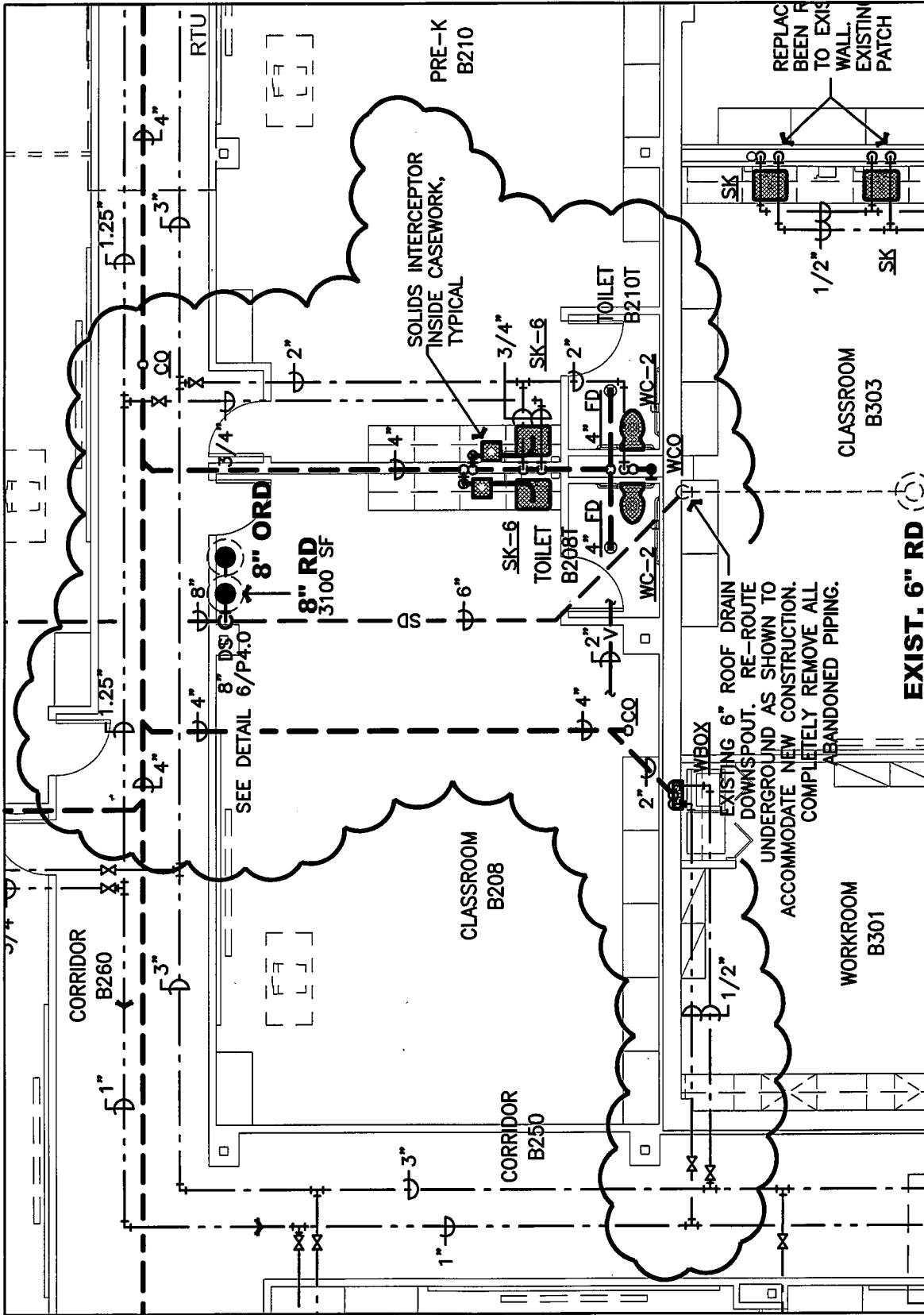


PARTIAL ELECTRICAL POWER FLOOR PLAN



BAY ARCHITECTS
18201 GULF FREEWAY
P.O. BOX 891209
HOUSTON, TEXAS 77289
281.286.6605

ADD8-SKE-03
0832
SCALE: 1/8"=1'-0"
2/12/2010
RE: E1.8



CLASSROOM B301 CLOTHES WASHER PLUMBING

BAY ARCHITECTS
 18201 GULF FREEWAY
 P.O. BOX 891209
 HOUSTON, TEXAS 77289
 281.286.6605



ADD8-SKPI
 0840/0832
 SCALE: 1/8" = 1'-0"
 2/12/2010

REPLAC
 BEEN R
 TO EXIS
 WALL.
 EXISTIN
 PATCH

EXISTING 6" ROOF DRAIN
 DOWNSPOUT. RE-ROUTE
 UNDERGROUND AS SHOWN TO
 ACCOMMODATE NEW CONSTRUCTION.
 COMPLETELY REMOVE ALL
 ABANDONED PIPING.

EXIST. 6" RD

CLASSROOM
 B303

WORKROOM
 B301

PRE-K
 B210

SOLIDS INTERCEPTOR
 INSIDE CASEWORK,
 TYPICAL

8" RD
 3100 SF

SEE DETAIL 6/P4.0

CORRIDOR
 B260

CLASSROOM
 B208

CORRIDOR
 B250

TOILET
 B210T

TOILET
 B208T

WBOX

WCO

WC-2

WC-2

4" FD

4" FD

4" FD

4" FD

4" FD

4" FD

4" FD

4" FD

4" FD

4" FD

4" FD

4" FD

4" FD

4" FD

4" FD

4" FD

4" FD

4" FD

4" FD

4" FD

4" FD

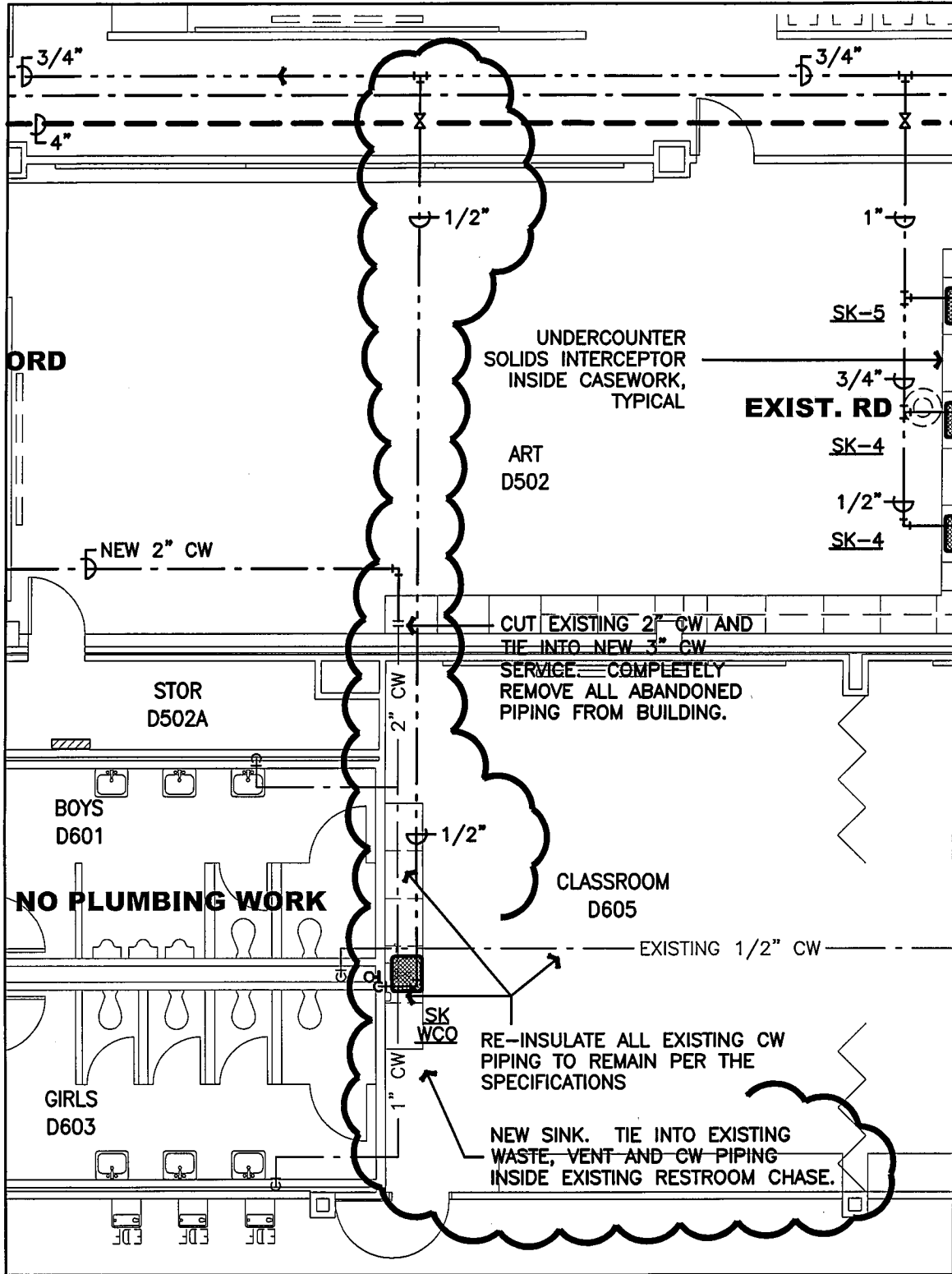
4" FD

4" FD

4" FD

4" FD

4" FD



CLASSROOM D605 SINK

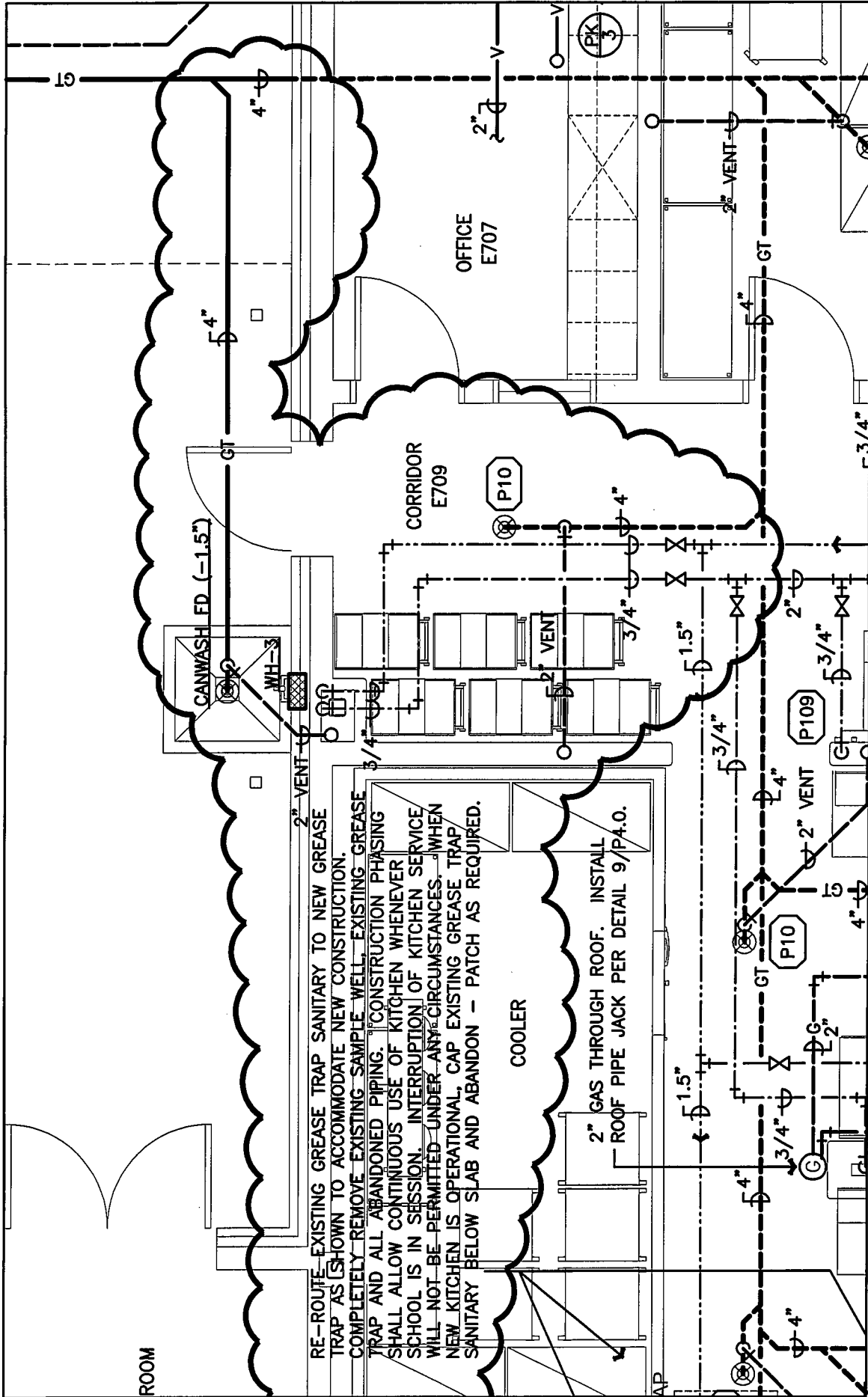


BAY ARCHITECTS

18201 GULF FREEWAY
 P.O. BOX 891209
 HOUSTON, TEXAS 77289
 281.286.6605

AD8-SKP2

0840/0832
 SCALE: 1/8" = 1'-0"
 2/12/2010



KITCHEN CANWASH

ADD8-SKP4
 0840/0832
 SCALE: 1/4" = 1'-0"
 2/12/2010

BAY ARCHITECTS

18201 GULF FREEWAY
 P.O. BOX 891209
 HOUSTON, TEXAS 77289
 281.286.6605

