



Bay Architects

18201 Gulf Freeway
Webster, Texas 77598
Tel 281.286.6605
Fax 281.286.9606

ADDENDUM NO. 04

June 4, 2010

Project: **Allied Health Addition**
San Jacinto College – Central Campus

Issued by: **Bay Architects, Inc.**
18201 Gulf Freeway
Webster, TX 77598
281-286-6605

Bay Project No.: **0822**

Prepared for: **CM@R Proposer**



PART A: NOTICE TO PROPOSERS:

1. Receipt of this Addendum shall be acknowledged on the Proposal Form. Failure to do so may subject Proposers to disqualification. Each proposer shall make necessary adjustments and submit his proposal with full knowledge of all modifications, clarification, and supplemental data included therein.
2. This Addendum forms part of the Contract Documents and shall be incorporated integrally therewith. Where provisions of the following supplemental data differ from those of previously issued documents, this Addendum shall govern.
3. The following Contract Documents have been issued to date delineating the Work (Project).

Contract Documents	May 21, 2010
Addendum No. 1	May 28, 2010
Addendum No. 2	June 2, 2010
Addendum No. 3	June 4, 2010
4. This Addendum consists of: ADD 04-1 – ADD 04-5; Section 07135 (7 page); Section 096724 (4 pages) attached sketches, **ADD-04-SK01** through **ADD-04-SK16** (34 pages); as prepared by Bay Architects, Inc.

PART B: CHANGES TO PRIOR ADDENDUM

“Any changes to prior issued addendum materials are listed here.”

5. Addendum No. 1
 - a. Sketch ADD-01-SK22, Custodial E115, the Keynote on plan indicated as “29” is incorrect, it should read “30”.
 - b. Sketch ADD-01-SK24, delete this sketch in its entirety to be replaced by ADD-04-SK03.

PART C: CHANGES TO THE PROJECT MANUAL

6. General Items
 - a. Delete the Table of Contents (white pages) immediately following Section 00 25 16 and just prior to Section 00 31 32, this is an additional Table of Contents that was mistakenly inserted by the Printer. The official Table of Contents (printed on yellow paper when printed by the Printer) occurs immediately following the Front Cover. All revisions to the Table of Contents will be recorded here.

7. Table of Contents
 - a. Delete - Section 07111 Elastomeric Below Grade Waterproofing
 - b. Add - Section 07135 Below Grade Waterproofing System
 - c. Revise Index of Drawings As follows
 - C1.00 Site Demolition Plan
 - C1.01 Site Plan
 - C1.02 Site Details
 - C1.03 Site Details
 - C2.01 General Notes
 - C2.02 Demolition Plan
 - C2.03 Grading Plan
 - C2.04 Detention Pond Plan And Details
 - C2.05 Storm Sewer Plan
 - C2.06 Storm Water Pollution Prevention Plan
 - C2.07 Service Drainage Area Map And Calculation
 - C2.08 Water and Sanitary Sewer Plan
 - C2.09 Storm Sewer Details
 - C2.10 Water Details
 - C2.11 Sanitary Sewer Details
 - C2.12 Storm Water Pollution Prevention Details
 - A7.05 Interior Elevations

8. Section 01 21 16 Allowances
 - a. Page 3, add the item H:
"H Demountable Wall System\$130,000.00"
(Owner purchased/Contractor installed interior demountable wall system)

9. Section 02200 Earthwork
 - a. Page 2, lines 14-16 delete
 - b. Page 3, line 26, item 04, Section "01530" is incorrect, it should be "02231".

10. Section 03300 Cast-In-Place Concrete
 - a. Page 7, line 35, b. delete "Blackline 500 System by Carlisle, Wylie, TX" and substitute "Parablock Root Barrier 20" by Siplast, Irving, TX.

11. Section 07111 Elastomeric Below Grade Waterproofing
 - a. Delete this section in its entirety.

12. Section 07135 Below Grade Waterproofing System
 - a. Add this section in its entirety.

13. Section 07721 Roof Accessories
 - a. Page 3, line 14, add the following:
 - 2.5 TIE BACK ANCHORS**
 - A. Provide and install all stainless steel Tie Back Anchors as indicated.

- a. Design safety anchor fall protection system to provide for safe execution of window washing or other suspended maintenance operations [including travel restraint].
- b. Design anchors to resist without fracture a pull-out force of 5400 lbs, applied in the most adverse direction.
- c. Provide forged eye and base, "Fixed Eye" Fall Arrest Roof Anchors, bolt around type OWSJ (open web steel joist) with injection molded urethane insulated hollow stainless steel post with base plate and cross tube (tube supplied under Section 05) for securing to an OWSJ. Complete with s.s. bolts and plate. Flashing to be by the Roofing Manufacturer to maintain Roof Warranty.
- d. Provide Bolt Around Beam type, same specifications as the bolt around OWSJ type above.
- e. All high strength Type 304 stainless steel, Model no. FARA-16SS for the bolt around OWSJ and Model no. FARA-13SS for the bolt around beam type, as manufactured by Thaler Metal Industries, New Braunfels, TX.

14. Section 12494 Roller Shades
- a. General: There are no double shades only single shades.
 - b. Page 4, lines 38-49 delete – there are no blackout shades.

PART D: CHANGES TO THE DRAWINGS

15. Cover Sheet
- a. Revise Sheet C2.04 to read "Detention Pond Plan and Details"
 - b. Revise Sheet C2.07 to read "Service Drainage Area Map and Calculation"
16. Sheet C1.00 – Site Demolition Plan
- a. Various revisions to better delineate areas to be demolished (RE: attached sketch ADD-04-SK15)
17. Sheet C1.01 – Site Plan
- a. At sidewalk to the east of the music building, change the detail reference reading "8/C1.02" to read "13/C1.02"
18. Sheet C1.02 – Site Details
- a. Delete details 2, 5, 10, 20, 21, & 22 in their entirety.
19. Sheet C1.03 – Site Details
- a. Delete details 1, 2, 3, & 4 in their entirety.
20. Sheet L1.2 – Hydromulch Planting Plan
- a. In the Notes (watering guidelines) both instances of text reading "...plus 120 days..." should be changed to read "...plus 60 days..."
21. Sheet A2.02 – First Floor Plan Area E
- a. Moved coffee bar in Conference Room B134 to northwest corner of room (RE: attached sketch ADD-04-SK01)
 - b. Deleted 6 lockers to make room for new coffee bar location (RE: attached sketch ADD-04-SK01)
 - c. Added Storage Room B136 at original coffee bar location (RE: attached sketch ADD-04-SK01)

22. Sheet A2.03 – Schedules Area E
- a. Various revisions to doors B130A, B132B, & B132C (RE: attached sketch ADD-04-SK02)
 - b. Added door B136 to door schedule (RE: attached sketch ADD-04-SK01)
 - c. Added Storage Room B136 to room finish schedule (RE: attached sketch ADD-04-SK01)
 - d. On the finish legend, change the description of AWP-1 to read “CARNEGIE: XOREL, STRIE, COLOR: 6423 F107 (LIGHT)”
 - e. On the finish legend, change the description of AWP-2 to read “CARNEGIE: XOREL, STRIE, COLOR: 6423 F129 (MEDIUM)”
23. Sheet A2.05 – Schedules Area F
- a. On the finish legend, change the description of AWP-1 to read “CARNEGIE: XOREL, STRIE, COLOR: 6423 F107 (LIGHT)”
 - b. On the finish legend, change the description of AWP-2 to read “CARNEGIE: XOREL, STRIE, COLOR: 6423 F129 (MEDIUM)”
24. Sheet A2.06 - Second Floor Plan Area G
- a. Change interior partition walls at Mechanical room G238 from type “A05” to type “F24”
25. Sheet A2.07 – Schedule Area G
- a. Change floor material at G999 Exterior Balcony to “SEAMLESS ACRYLIC FLOORING”
 - b. On the finish legend, change the description of AWP-1 to read “CARNEGIE: XOREL, STRIE, COLOR: 6423 F107 (LIGHT)”
 - c. On the finish legend, change the description of AWP-2 to read “CARNEGIE: XOREL, STRIE, COLOR: 6423 F129 (MEDIUM)”
26. Sheet A2.08 – Second Floor Plan Area H
- a. Changed the west wall in Mechanical room H217 to type “F83”
27. Sheet A2.09 – Schedules Area H
- b. On the finish legend, change the description of AWP-1 to read “CARNEGIE: XOREL, STRIE, COLOR: 6423 F107 (LIGHT)”
 - c. On the finish legend, change the description of AWP-2 to read “CARNEGIE: XOREL, STRIE, COLOR: 6423 F129 (MEDIUM)”
28. Sheet A4.02 – Roof Details
- a. Detail 7 – Changed dimension at front of sheet metal coping from 8” to 6”.
 - b. Added Detail 11 to sheet (RE: attached sketch ADD-04-SK03)
 - c. Revised Detail 10 (RE: attached sketch ADD-04-SK09)
 - d. Detail 2 – Revised entire detail (RE: attached sketch ADD-04-SK14A, ADD-04-SK14B and ADD-04-SK14C)
29. Sheet A4.03 – Roof Details
- a. Added Detail 9 – “Roof Tie Back Anchor” (RE: attached sketch ADD-04-SK04)
 - b. Delete Detail 6 in its entirety
 - c. Replace Detail 1 with detail shown in attached sketch ADD-04-SK16.
 - d. Delete details 2 & 3 in their entirety.
30. Sheet A6.00 – Partition Types
- a. Added general note to sheet reading “All “F” partition types indicated to comply with a UL Assembly Design Number may not be required to be fire rated in all locations where scheduled on the floor plans. Refer to

Life Safety Plans G1.02 & G1.03 for locations of partitions that are required to be fire rated.”

31. Sheet A7.05 – Interior Elevations
 - a. Add detail 9 (RE: attached sketch ADD-04-SK12)
 - b. Add detail 10 (RE: attached sketch ADD-04-SK12)

32. Sheet A8.03 – Casework Sections
 - a. Detail 15 – Revised Conference room coffee bar design (RE: attached sketch ADD-04-SK05)
 - b. Detail 17 – Modified reveal. Designated finish on stainless steel bands. (RE: attached sketch ADD-04-SK06)
 - c. Detail 18 – Modified reveal. Designated finish on stainless steel bands. (RE: attached sketch ADD-04-SK07)
 - d. Detail 21 – Designated countertop material as “3/4” PAPERSTONE”. Changed divider panel bracing from 3/4” plywood strips to 2x2x1/8” aluminum angles. (RE: attached sketch ADD-04-SK08)

33. Sheet A9.01 – Door Frame/Type & Window Elevations
 - a. Modified glass types on windows A, B, & C from G-3 to G-5
 - b. Sheet A10.03
 - c. Added markerboard light to room Sonography Lab G240
 - d. Added markerboard light to room Classroom G241

34. Sheet A10.04 – Reflected Ceiling Plan Area H
 - a. Added markerboard light to room Classroom H208
 - b. Added markerboard light to room Classroom H209
 - c. Added markerboard light to room Dental Assisting Lab H212

35. Sheet A11.01 – First Floor Patterns
 - a. Added detail 5 showing tile to wood floor transition (RE: attached sketch ADD-04-SK10)
 - b. Added detail 6 showing carpet to wood floor transition (RE: attached sketch ADD-04-SK10)
 - c. Revise detail reference to read “3/A7.05” (RE: attached sketch ADD-04-SK13)

36. Sheet T1.01 – First Floor Area E Communication Plan
 - a. Delete projection screen and associated ceiling mounted receptacle from Large Tiered Classroom E102
 - b. Delete card readers from entry doors to rooms E105, E117, E127, E129, & E138.
 - c. Add card reader to entry door to room E103

37. Sheet T1.02 – First Floor Area F Communication Plan
 - a. Delete projection screen and associated ceiling mounted receptacle from Medium Tiered Classroom F104

38. Sheet T1.03 – Second Floor Area G Communication Plan
 - a. Delete card readers from entry doors to rooms G204, G225, G236, & G237
 - b. Add card reader to room G222
 - c. Add card reader to door leading from corridor G224 to exterior balcony G999.

PART E: RE-ISSUED SHEETS

39. None

END OF ADDENDUM

1
2
3
4
5
6
7
8
9
10
11
12
13
14
15
16
17
18
19
20
21
22
23
24
25
26
27
28
29
30
31
32
33
34
35
36
37
38
39
40
41
42
43
44
45
46
47
48
49
50
51
52
53
54
55
56

SECTION 07135

BELOW GRADE WATERPROOFING SYSTEM

CONDITIONS OF THE CONTRACT AND DIVISION 1, as indexed, apply to this Section

PART 1 — GENERAL

1.1 SUMMARY

- A. The Work of this Section includes, but is not limited to, pre-applied (blindsided) sheet membrane waterproofing that forms an integral bond to poured concrete for the following applications:
1. Horizontal Applications: Membrane applied on prepared subbase prior to placement of below grade concrete slabs for elevator pit foundations.
 2. Vertical Applications: Membrane applied against soil retention system prior to placement of concrete foundation walls, such as elevator pit slab turn-up and exterior and interior planter walls.
- B. Work of this section also includes membrane waterproofing applied to poured concrete below grade for the following applications:
1. Vertical and horizontal applications at concrete elevator pit walls & foundations where pre-applied sheet membrane has already been executed and exterior or interior concrete or masonry planter walls and as indicated. Provide Protection Board as recommended by the manufacturer.
- C. All sheet waterproofing membrane products shall be from one manufacturer to ensure a compatible waterproofing system.
- D. Related sections include, but are not limited to, the following:
1. Section 02200 – Earthwork
 2. Section 03300 – Cast-In-Place Concrete
- E. Refer to the CM@R Proposal Instructions issued under a separate cover.

1.2 SUBMITTALS

- A. Submit manufacturer's product data, installation instructions and membrane samples for approval.
- B. Sustainable Design (LEED) Requirements submittals: In compliance with Section 013531, Section 018113, and as specified herein.
1. MR Credit 5: Regional Materials
 - a. Compile a list of products purchased manufactured, extracted, or harvested regionally within 500 miles of the project site.
 - b. Record manufacturers' names, product costs, distances between the project and manufacturer, and distances between the project and the extraction site.
 - c. Where appropriate, retain cutsheets that document material origin and manufacture within a 500-mile radius of the project site.
 - d. Where appropriate, maintain a list of materials costs, excluding labor and equipment for divisions such as foundations, site improvements, and planting

1.31 1.3 REFERENCE STANDARDS

2
3
4
5
6
7
8
9
10
11
12
13
14
15
16
17
18
19
20
21
22

- A. The following standards and publications are applicable to the extent referenced in the text.
- B. American Society for Testing and Materials (ASTM):
 1. C 836 Standard Specification for High Solids, Cold Liquid-Applied Elastomeric Waterproofing Membrane for Use with Separate Wearing Course
 2. D 412 Standard Test Methods for Rubber Properties in Tension
 3. D 570 Standard Test Method for Water Absorption of Plastics
 4. D 903 Standard Test Method for Peel or Stripping Strength of Adhesive Bonds
 5. D 1434 Standard Test Method for Determining Gas Permeability Characteristics of Plastic Film and Sheeting
 6. D 1876 Standard Test Method for Peel Release of Adhesives (T-Peel)
 7. D 1970 Standard Specification for Self-Adhering Polymer Modified Bituminous Sheet Materials Used as Steep Roofing Underlayment for Ice Dam Protection
 8. D 3767 Standard Practice for Rubber - Measurements of Dimensions
 9. D 5385 Standard Test Method for Hydrostatic Pressure Resistance of Waterproofing Membranes
 10. E 96 Standard Test Methods for Water Vapor Transmission of Materials
 11. E 154 Standard Test Methods for Water Vapor Retarders Used in Contact with Earth Under Concrete Slabs, on Walls, or as Ground Cover

1.43 1.4 QUALITY ASSURANCE

24
25
26
27
28
29
30
31
32
33
34
35
36
37
38
39
40
41
42
43
44

- A. Manufacturer: Sheet membrane waterproofing system shall be manufactured and marketed by a firm with a minimum of 20 years experience in the production and sales of sheet membrane waterproofing. Manufacturers proposed for use but not named in these specifications shall submit evidence of ability to meet all requirements specified, and include a list of projects of similar design and complexity completed within the past 5 years.
- B. Installer: A firm which has at least 3 years experience in work of the type required by this section.
- C. Materials: For each type of material required for the work of this section, provide primary materials which are the products of one manufacturer.
- D. Pre-Installation Conference: A pre-installation conference shall be held prior to commencement of field operations to establish procedures to maintain optimum working conditions and to coordinate this work with related and adjacent work. Agenda for meeting shall include review of special details and flashing.
- E. Schedule Coordination: Schedule work such that membrane will not be left exposed to weather for longer than that recommended by the manufacturer.

45 1.5 DELIVERY, STORAGE AND HANDLING

46
47
48
49
50
51

- A. Deliver materials in labeled packages. Store and handle in strict compliance with manufacturer's instructions. Protect from damage from weather, excessive temperature and construction operations. Remove and dispose of damaged material in accordance with applicable regulations.

52 1.6 PROJECT CONDITIONS

53
54
55

- A. Perform work only when existing and forecasted weather conditions are within the limits established by the manufacturer of the materials used. Proceed with installation only when the

1 substrate construction and preparation work is complete and in condition to receive sheet
2 membrane waterproofing.

3
4 **1.7 WARRANTY**

5
6 A. Sheet Membrane Waterproofing: Provide written five year material warranty issued by the
7 membrane manufacturer upon completion of work.
8

9
10 **PART 2 — PRODUCTS**

11 **2.11 PRE-APPLIED (BLINDSIDE) WATERPROOFING MEMBRANE**

12
13 A. Pre-applied (Blindside) Integrally Bonded Sheet Waterproofing Membrane: a 1.2mm (0.046
14 in) nominal thickness composite sheet membrane comprising 0.8 mm (0.030 in.) of high
15 density polyethylene film, and layers of specially formulated synthetic adhesive layers. The
16 membrane shall form an integral and permanent bond to poured concrete to prevent water
17 migration at the interface of the membrane and structural concrete. Provide membrane with
18 the following physical properties:

19
20 **PHYSICAL PROPERTIES:**

21

Property	Test Method	Typical Value
Color		White
Thickness	ASTM D 3767 Method A	1.2 mm (0.046 in.) nominal
Low Temperature Flexibility	ASTM D 1970	Unaffected at -23°C (-10°F)
Elongation	ASTM D 412 Modified ¹	>300%
Crack Cycling at -23°C (-10°F), 100 Cycles	ASTM C 836	Unaffected
Tensile Strength, Film	ASTM D 412	27.6 MPa (4,000 lbs/in. ²) minimum
Peel Adhesion to Concrete	ASTM D 903 Modified ²	880 N/m (5.0 lbs/in.)
Lap Adhesion	ASTM D 1876 Modified ³	440 N/m (2.5 lbs/in.)
Resistance to Hydrostatic Head	ASTM D 5385 Modified ⁴	>70 m (231 ft)
Puncture Resistance	ASTM E 154	990 N (180 lbs) minimum
Permeance	ASTM E 96 Method B	<0.6 ng/m ² sPa (0.01 perms)
Water Absorption	ASTM D 570	<0.5%

22
23 *Footnotes:*

- 24 1. *Elongation of membrane is run at a rate of 50 mm (2 in.) per minute.*
25 2. *Concrete is cast against the protective coating surface of the membrane and allowed to cure (7*
26 *days minimum). Peel adhesion of membrane to concrete is measured at a rate of 50 mm (2 in.)*
27 *per minute at room temperature.*
28 3. *The test is conducted 15 minutes after the lap is formed as per manufacturer's instructions and*
29 *run at a rate of 50 mm (2 in.) per minute at -4°C (25°F).*
30 4. *Hydrostatic head tests are performed by casting concrete against the membrane with a lap.*
31 *Before the concrete sets a 3 mm (0.125 in.) spacer is inserted perpendicular to the membrane*
32 *to create a gap. The cured block is placed in a chamber where water is introduced to the*
33 *membrane surface up to a head of 70 m (231 ft) of water which is the limit of the apparatus.*

34
35 B. Waterstop: Adcor™ ES hydrophilic non-bentonite waterstop by Grace Construction Products
36 for non-moving concrete construction joints.

37
38 C. Miscellaneous Materials: Tape, sealant and other accessories specified or acceptable to
39 manufacturer of pre-applied waterproofing membrane.
40
41

2.21 2.2 POST-APPLIED BELOW GRADE WATERPROOFING MEMBRANE

2
3
4
5
6
7
8
9

- A. Sheet Membrane Waterproofing: a self-adhesive, cold-applied composite sheet consisting of a thickness of 1.4 mm (0.056 in.) of rubberized asphalt and 0.1 mm (0.004 in.) of cross-laminated, high density polyethylene film. Provide rubberized asphalt membrane covered with a release sheet, which is removed during installation. No special adhesive or heat shall be required to form laps.
- B. Sheet Membrane Waterproofing:

PHYSICAL PROPERTIES:

Property	Test Method	Typical Value
Color		Dark gray-black
Thickness	ASTM D 3767 Method A	1.5 mm (0.060 in.) nominal
Flexibility, 180° bend over 25 mm (1 in.) mandrel at -43°C (-45°F)	ASTM D 1970	Unaffected
Tensile Strength, Membrane Die C	ASTM D 412 Modified ¹	2240 kPa (325 lbs/in. ²) minimum
Tensile Strength, Film	ASTM D 882 Modified ¹	34.5 MPa (5,000 lbs/in. ²) minimum
Elongation, Ultimate Failure of Rubberized Asphalt	ASTM D 412 Modified ¹	300% minimum
Crack Cycling at -32°C (-25°F), 100 Cycles	ASTM C 836	Unaffected
Lap Adhesion at Minimum Application Temperature	ASTM D 1876 Modified ²	700 N/m (4 lbs/in.) – Bituthene 3000 880 N/m (5 lbs/in.) – Low Temp
Peel Strength	ASTM D 903 Modified ³	1576 N/m (9 lbs/in.)
Puncture Resistance, Membrane	ASTM E 154	222 N (50 lbs) minimum
Resistance to Hydrostatic Head	ASTM D 5385	60 m (200 ft) of water
Permeance	ASTM E 96, Section 12 – Water Method	2.9 ng/m ² sPa (0.05 perms) maximum
Water Absorption	ASTM D 570	0.1% maximum

10
11
12
13
14
15
16
17
18
19
20
21
22
23
24
25
26
27
28
29
30

Footnotes:

1. The test is run at a rate of 50 mm (2 in.) per minute.
2. The test is conducted 15 minutes after the lap is formed and run at a rate of 50 mm (2 in.) per minute at -4°C (25°F).
3. The 180° peel strength is run at a rate of 300 mm (12 in.) per minute.

- C. Protection Board:
 1. Expanded Polystyrene Protection Board: 1 in. thick for vertical applications with the following characteristics. Adhere to waterproofing membrane with Bituthene Protection Board Adhesive.
Normal Density: 16 kg/m³ (1.0 lb/ft³)
Thermal Conductivity, K factor: 0.24 at 5°C (40°F), 0.26 at 24°C (75°F)
Thermal Resistance, R-Value: 4 per 1 in. of thickness.
- E. Waterstop: Adcor™ ES hydrophilic non-bentonite waterstop by Grace Construction Products for non-moving concrete construction joints.
- F. Miscellaneous Materials: Surface conditioner, mastic, liquid membrane, tape and accessories specified or acceptable to manufacturer of sheet membrane waterproofing.

- 2.31 2.3 **PRE-APPLIED (BLINDSIDE) WATERPROOFING MEMBRANE**
 2 **MANUFACTURERS**
 3
 4 A. Preprufe 300R Membrane by Grace Construction Products (basis of specification).
 5
 6 B. The following products will be considered provided they have shown through data and
 7 samples and case studies submitted that their products will meet or exceed the specified
 8 product.
 9 1. 'MiraPly-H' by Carlisle Coatings & Waterproofing
 10 2. 'Paraseal LG' by Tremco Commercial Sealants & Waterproofing
 11 3. 'PMPC' by W.R. Meadows, Inc.
 12
- 2.43 2.4 **POST-APPLIED SHEET WATERPROOFING MEMBRANE MANUFACTURERS**
 14
 15 A. Bituthene 3000 Membrane by Grace Construction Products (basis of specification).
 16
 17 B. The following products will be considered provided they have shown through data and
 18 samples and case studies submitted that their products will meet or exceed the specified
 19 product.
 20 1. 'CCW MiraDri 860' by Carlisle Coatings & Waterproofing
 21 2. 'Paraseal' by Tremco Commercial Sealants & Waterproofing
 22 3. 'Mel-Rol' by W.R. Meadows, Inc.
 23
- ~~P~~24 **PART 3 — EXECUTION**
 25
- 3.16 3.1 **EXAMINATION**
 27
 28 A. The installer shall examine conditions of substrates and other conditions under which this work
 29 is to be performed and notify the Contractor, in writing, of circumstances detrimental to the
 30 proper completion of the work. Do not proceed with work until unsatisfactory conditions are
 31 corrected.
 32
- 3.23 3.2 **PREPARATION OF SUBSTRATES FOR POST-APPLIED MEMBRANES**
 34
 35 A. Cast-In-Place Concrete Substrates:
 36 1. Do not proceed with installation until concrete has properly cured and dried
 37 (minimum 7 days for normal structural concrete and minimum 14 days for
 38 lightweight structural concrete).
 39 2. Fill form tie rod holes with concrete and finish flush with surrounding surface.
 40 3. Repair bugholes over 13 mm (0.5 in.) in length and 6 mm (0.25 in.) deep and finish
 41 flush with surrounding surface.
 42 4. Remove scaling to sound, unaffected concrete and repair exposed area.
 43 5. Grind irregular construction joints to suitable flush surface.
 44
 45 B. Masonry Substrates (if applicable): Apply waterproofing over concrete block and brick with
 46 smooth trowel-cut mortar joints or parge coat.
 47
 48 C. Wood Substrates (if applicable): Apply waterproofing membrane over securely fastened
 49 sound surface. All joints and fasteners shall be flush to create a smooth surface.
 50
 51 D. Related Materials: Treat joints and install flashing as recommended by waterproofing
 52 manufacturer.
 53

- 3.31 3.3 **INSTALLATION PRE-APPLIED BLINDSIDE MEMBRANES – HORIZONTAL APPLICATIONS**
 2
 3
 4 A. Earth and stone substrates shall be well compacted to produce an even, solid substrate.
 5 Remove loose aggregate or sharp protrusions. Concrete substrates shall be smooth or broom
 6 finished and monolithic. Fill gaps or voids greater than ½ inch. Remove standing water prior
 7 to membrane applications.
 8
 9 B. Strictly comply with installation instructions in manufacturer’s published literature, including
 10 but not limited to, the following:
 11 1. Apply membrane with the HDPE film facing the prepared substrate. Remove the
 12 release liner during application.
 13 2. Apply succeeding sheets by overlapping the previous sheet 3 inches along the
 14 uncoated edge of the membrane. Lap area must be firmly rolled to ensure a tight seal.
 15 3. Overlap the ends of the membrane a minimum of 3 inches and apply Preprufe® Tape
 16 along the entire length of the lap and roll firmly to ensure a tight seal.
 17
- 3.38 3.4 **INSTALLATION PRE-APPLIED BLINDSIDE MEMBRANES - VERTICAL APPLICATIONS**
 19
 20
 21 A. Substrates shall be smooth and sound. Forming plywood is a suitable non-draining type
 22 substrate for pre-applied blindside membranes recommended by the manufacturer.
 23
 24 B. Strictly comply with installation instructions in manufacturer’s published literature, including
 25 but not limited to, the following:
 26 1. Apply membrane with the HDPE film facing the prepared soil retention system (wood
 27 lagging, sheet piling, gunite, shotcrete, etc.). Remove the release liner and fasten
 28 membrane along uncoated edge to substrate with large head nails or to plywood with
 29 large head nails or staples.
 30 2. Apply succeeding sheets by overlapping the previous sheet 3 inches along the
 31 uncoated edge of the membrane. Side laps must be firmly rolled to ensure a tight
 32 seal.
 33 3. Overlap the ends of the membrane 3 inches. Apply Preprufe® Tape along the entire
 34 length of the lap and roll firmly to ensure a tight seal. Remove release liner.
 35
- 3.36 3.5 **INSTALLATION OF POST-APPLIED WATERPROOFING MEMBRANE**
 37
 38 A. Refer to manufacturer’s literature for recommendations on installation, including but not
 39 limited to, the following:
 40 1. Apply primer at rate recommended by manufacturer. Recoat areas not waterproofed
 41 if contaminated by dust. Mask and protect adjoining exposed finish surfaces to
 42 protect those surfaces from excessive application of primer.
 43 2. Delay application of membrane until primer is completely dry. Dry time will vary
 44 with weather conditions.
 45 3. Seal daily terminations with troweled bead of mastic.
 46 4. Apply protection board and related materials in accordance with manufacturer’s
 47 recommendations.
 48

3.41
2
3
4
5
6
7
8
9
10
11
12
13
14

3.6 PROTECTION

- A. Protect membrane in accordance with manufacturer's recommendations until placement of concrete for blindside membranes. Inspect for damage just prior to placement of concrete and make repairs in accordance with manufacturer's recommendations.
- B. Remove any masking materials after installation. Clean any stains on materials which would be exposed in the completed work.
- C. Protect completed membrane waterproofing from subsequent construction activities as recommended by manufacturer.

END OF SECTION

SECTION 096724

SEAMLESS ACRYLIC FLOORING

PART 1 – GENERAL

1.1 RELATED DOCUMENTS

- A. Drawings and general provisions of the Contract, including General and Supplementary Conditions and Division 1 Specification Sections, apply to this Section.

1.2 SUMMARY

- A. This section includes the following:
 - 01 Seamless acrylic, methyl methacrylate (MMA) flooring system as shown on the drawings and in schedules.

1.3 SYSTEM DESCRIPTION

- A. The work shall consist of preparation of the substrate, the furnishing and application of a methyl methacrylate (MMA) based multi roller applied flooring system with integral fiberglass mat, Q 11 colored quartz aggregate and topcoats. The system shall have the color and texture as specified by the Owner with a nominal thickness of 1/4 inch. It shall be applied to the prepared area(s) as defined in the plans strictly in accordance with the Manufacturer's recommendations.
- B. Cove base (if required) to be applied where noted on plans and per manufacturers standard details unless otherwise noted.

1.4 SUBMITTALS

- A. Product Data: Latest edition of Manufacturer's literature including performance data and installation procedures.
- B. Manufacturer's Material Safety Data Sheet (MSDS) for each product being used.
- C. Samples: A 6 inch square sample of the proposed system. Color, texture, and thickness shall be representative of overall appearance of finished system.

1.5 QUALITY ASSURANCE

- A. The Manufacturer shall have a minimum of 10 years experience in the production, sales, and technical support of methyl methacrylate (MMA) industrial flooring and related materials.
- B. The Applicator shall have been approved by the flooring system manufacturer in all phases of surface preparation and application of the product specified.
- C. No requests for substitutions shall be considered that would change the generic type of the specified system (100 % reactive, Methyl Methacrylate based acrylic resin).
- D. System shall be in compliance with requirements of United States Department of Agriculture (USDA), Food, Drug Administration (FDA), local Health Department, Canadian Food Inspection Agency (CFIA) and certified by National Sanitation Foundation (NSF)
- E. A pre-installation conference shall be held between Applicator, General Contractor and the Owner to review and clarification of this specification, application procedure, quality control, inspection and acceptance criteria and production schedule.

1.6 PRODUCT DELIVERY, STORAGE, AND HANDLING

- A. Packing and Shipping
 - 01 All components of the system shall be delivered to the site in the Manufacturer's packaging, clearly identified with the product type and batch number.
- B. Storage and Protection
 - 01 The Applicator shall be provided with a storage area for all components. The area shall be between 35 F and 85 F, dry, out of direct sunlight and in accordance with the Manufacturer's recommendations and relevant health and safety regulations.
 - 02 Copies of Material Safety Data Sheets (MSDS) for all components shall be kept on site for review by the Engineer or other personnel.
- C. Waste Disposal
 - 01 The Applicator shall be provided with adequate disposal facilities for non-hazardous waste generated during installation of the system.

1.7 PROJECT CONDITIONS

- A. Site Requirements
 - 01 Application may proceed while air, material and substrate temperatures are between 35 F and 90 F providing the substrate temperature is above the dew point. Outside of this range, the Manufacturer shall be consulted.
 - 02 The relative humidity in the specific location of the application shall be less than 85 % and the surface temperature shall be at least 5 F above the dew point.
 - 03 The Applicator shall ensure that adequate ventilation is available for the work area. This shall include the use of manufacturer's approved fans, smooth bore tubing and closure of the work area.
 - 04 The Applicator shall be supplied with adequate lighting equal to the final lighting level during the preparation and installation of the system.
- B. Safety Requirements
 - 01 All open flames and spark-producing equipment shall be removed from the work area prior to commencement of application.
 - 02 "No Smoking" signs shall be posted at the entrances to the work area.
 - 03 The Owner shall be responsible for the removal of foodstuffs from the work area.
 - 04 Non-related personnel in the work area shall be kept to a minimum.

1.8 WARRANTY

- A. Dur-A-Flex, Inc. warrants that material shipped to buyers at the time of shipment substantially free from material defects and will perform substantially to Dur-A-Flex, Inc. published literature if used in accordance with the latest prescribed procedures and prior to the expiration date.
- B. Dur-A-Flex, Inc. liability with respect to this warranty is strictly limited to the value of the material purchase.

PART 2 – PRODUCTS

2.1 FLOORING

- A. Dur-A-Flex, Inc. Cryl-A-Quartz, MMA-Based seamless acrylic flooring system or an approved equal.
 - 01 System Materials:
 - a. Primer Coat: Dur-A-Flex, Inc. Cryl-A-Prime P-101 MMA-based, two-component primer.
 - b. The fiberglass mat shall be Dur-A-Flex, ¾ ounce (per square foot) random weave fiberglass mat.
 - c. Bond Coat: Dur-A-Flex, Inc. Cryl-A-Glaze G-201, MMA-based two-component resin.
 - d. The aggregate shall be Dur-A-Flex, Inc., Q 11 colored quartz.
 - e. Topcoats: Dur-A-Flex, Inc. Cryl-A-Top T-303, MMA-based, two-component resin.
 - f. Topcoats colors to be selected from the manufacturers standard quartz chips by the Architect.

2.2 MANUFACTURER

- A. Dur-A-Flex, Inc., 95 Goodwin Street, East Hartford, CT 06108, Phone: (860) 528-9838, Fax: (860) 528-2802
- B. Manufacturer of Approved System shall be single source and made in the USA.

PART 3 – EXECUTION

3.1 EXAMINATION

- A. Examine substrates, areas and conditions, with Applicator present, for compliance with requirements for maximum moisture content, bond test, installation tolerances and other conditions affecting flooring performance.
 - 01 Verify that substrates and conditions are satisfactory for flooring installation and comply with requirements specified.

3.2 PREPARATION

- A. Condition of concrete.
 - 01 Concrete shall be cured minimum 28 days..
 - 02 Surface shall be clean and dry.
 - 03 Prep shall be mechanical (shot blast, scarify or diamond grind)

3.3 APPLICATION

- A. General
 - 01 The system shall be applied in seven distinct steps as listed below:
 - a. Substrate preparation
 - b. Priming
 - c. Install fiberglass mat with bond coat
 - d. First bond coat application with first aggregate broadcast
 - e. Second bond coat with second aggregate broadcast
 - f. Topcoat application, sand floor (if required)
 - g. Second topcoat application
 - 02 Immediately prior to the application of any component of the system, the surface shall be dry and any remaining dust or loose particles shall be removed using a vacuum or clean, dry, oil-free compressed air.
 - 03 The handling, mixing and addition of components shall be performed in a safe manner to achieve the desired results in accordance with the Manufacturer's recommendations.
 - 04 The system shall follow the contour of the substrate unless pitching or other leveling work has been specified by the Architect.
 - 05 A neat finish with well-defined boundaries and straight edges shall be provided by the Applicator.
- B. Primer
 - 01 The Cryl-A-Prime P-101 w/Cryl A Bond shall consist of one roller applied coat with a coverage rate of 90-110 sf/gal.
 - 02 All components shall be measured and mixed in accordance with the Manufacturer's recommendations.
 - 03 The primer shall cure tack-free before application of the floor topping.
 - 04 Ensure that all the seams (gaps) where the plywood meets are filled with resin.
- C. Fiberglass
 - 01 The fiberglass (60 inch) wide rolls shall be laid out on the cured and tack-free primed surface and overlapped 4 inches.
 - 02 The fiberglass is to then be saturated with the bond coat resin at the rate of 30-40 sf/gal.
 - 03 All components shall be measured and mixed in accordance with the Manufacturer's recommendations.

- D. Bond Coat
 - 01 The first Bond Coat of Cryl-A-Glaze G-201 shall be applied with a roller at a rate of 100-110 sf/gal and broadcast to excess, 0.3-0.5 lbs/sf with the quartz aggregate.
 - 02 The second Bond coat of Cryl-A-Glaze G-201 shall be applied at 50-70 sf/gal and broadcast to excess, 0.3-0.5 lbs/sf with the quartz aggregate.
 - 03 Allow material to fully cure. Vacuum, sweep, and/or blow to remove all loose aggregate.

- E. Topcoat
 - 01 The first roller applicator topcoat of Cryl-A-Top T-303 shall have a coverage rate of 50-70 sf/gal.
 - 02 The first topcoat coat will be allowed to cure then can be sanded or scraped to give desired finish texture.
 - 03 The second topcoat is applied at a coverage rate of 90-110 sf/gal.
 - 04 The finish floor will have a nominal thickness of 1/4 inch.

3.4 FIELD QUALITY CONTROL

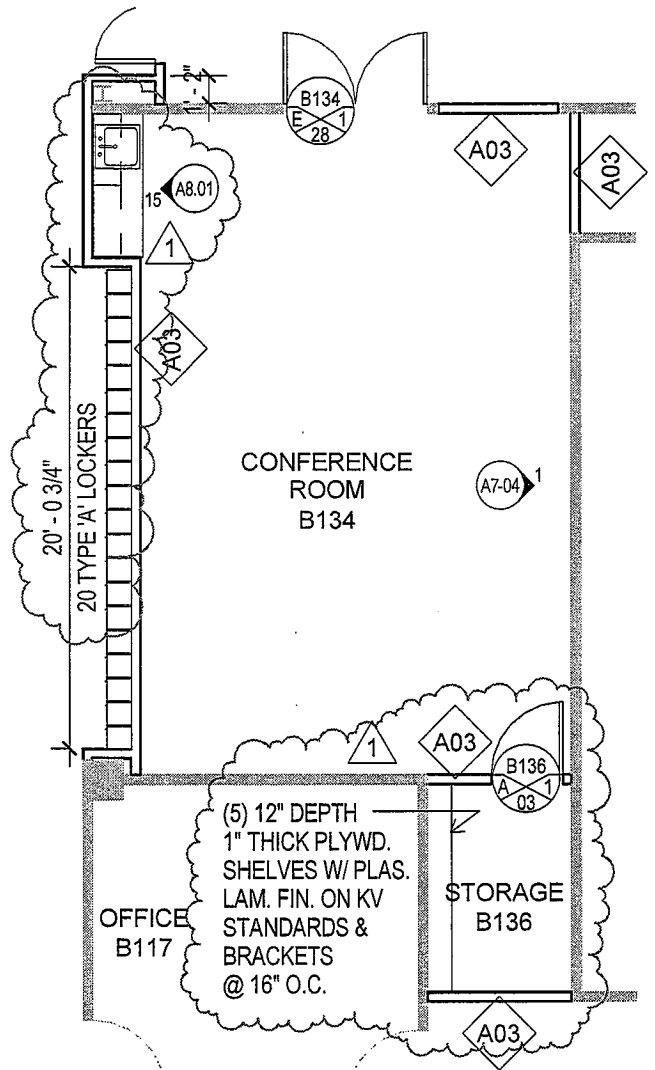
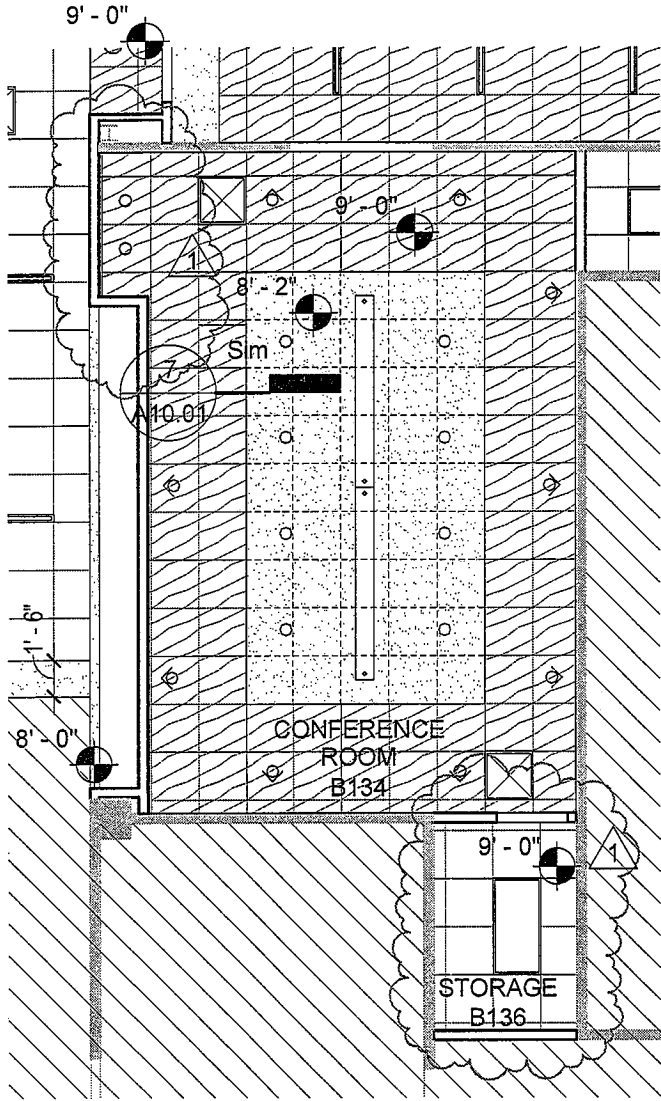
- A. Tests, Inspection
 - 01 The following tests shall be conducted by the Applicator:
 - a. Temperature
 - i. Air, substrate temperatures and, if applicable, dew point.
 - b. Coverage Rates
 - i. Rates for all layers shall be monitored by checking quantity of material used against the area covered.

3.5 CLEANING AND PROTECTION

- A. Cure flooring material in compliance with manufacturer's directions, taking care to prevent their contamination during stages of application and prior to completion of the curing process.

- B. Remove masking. Perform detail cleaning at floor termination, to leave cleanable surface for subsequent work of other sections.

END OF SECTION



2 STORAGE B136 - RCP
1/8" = 1'-0"

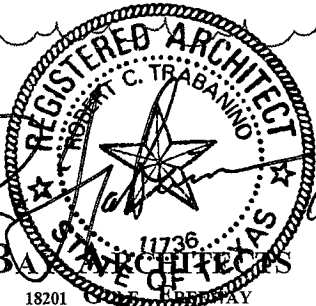
1 CONF. B134 - FLOOR PN
1/8" = 1'-0"

DOOR SCHEDULE AREA "E" (ADD-04)

DOOR #	DOOR SIZE (W x H)	DR ELEV	DR MATL	GLASS TYPE	FRAME SIZE (W x H)	FR ELEV	FR MATL	SILL DETAIL	JAMB DETAIL	HEAD DETAIL	H.W.	FIRE RATING LABEL	REMARKS	DOOR #
B136	3'-0" x 8'-10"	A	S.C.P.L.	-	2"x5 3/4"	1	H.M.		11/A9.04	23/A9.04	03			B136

ROOM FINISH SCHEDULE AREA "E"-EXISTING (ADD-04)

ROOM NO.	ROOM NAME	FLOOR	BASE	WALL				CEILING	GRAPHIC SIGNAGE	REMARKS
				NORTH	EAST	SOUTH	WEST			
B136	STORAGE	CPT-1	RB-1	PT-1	PT-1	PT-1	PT-1	ACT		



18201
P.O. BOX 891209
HOUSTON, TEXAS 77289
281.286.6605

CONFERENCE ROOM & STORAGE

Allied Health Addition
San Jacinto College District

ADD-04-SK01

PROJ-0822
1/8" = 1'-0"
06/04/10
A2.02, A10.01

DOOR SCHEDULE AREA "E" (ADD-00)														
DOOR #	DOOR SIZE (W x H)	DR ELEV	DR MATL	GLASS TYPE	FRAME SIZE (W x H)	FR ELEV	FR MATL	SILL DETAIL	JAMB DETAIL	HEAD DETAIL	H.W.	FIRE RATING LABEL	REMARKS	DOOR #
B130A	3'-0" x 8'-10"	B	S.C.P.L.	G5	2"x5 3/4"	1	H.M.	28/A9.04	11/A9.04	23/A9.04	17			B130A
B132A	(PR) 2'-6" x 8'-10"	E	S.C.P.L.	G5	2"x5 3/4"	1	H.M.	28/A9.04	11/A9.04	23/A9.04	28			B132A
B132B	(3'-0" x 7'-0")	K	ALUM./GL.	G1	FIELD VERIFY	CC/1	ALUM.	4/A9.04	-	8/A6.05	01			B132B
B132C	3'-0" x 8'-10"	B	S.C.P.L.	G5	2"x5 3/4"	1	H.M.	- / 2	11/A9.04	23/A9.04	16			B132C
B132D	3'-0" x 8'-10"	-	-	-	2"x5 3/4"	1	H.M.	-	11/A9.04	23/A9.04			CASED OPN'G	B132D
B134	(PR) 3'-0" x 8'-10"	E	S.C.P.L.	G5	2"x5 3/4"	1	H.M.	28/A9.04	11/A9.04	23/A9.04	28			B134
B136	3'-0" x 8'-10"	A	S.C.P.L.	-	2"x5 3/4"	1	H.M.		11/A9.04	23/A9.04	03			B136
E100	(PR) 3'-0" x 8'-9 1/2"	K	ALUM./GL.	G3	2 1/2"x 7 1/4"	D	ALUM.	04/A9.04	06/A9.04	05/A9.04	22		VERIFY HT. W/ CURTAIN WALL MFR.	E100
E101A	(PR) 3'-0" x 8'-9 1/2"	K	ALUM./GL.	G3	2 1/2"x 7 1/4"	D	ALUM.	04/A9.04	06/A9.04	05/A9.04	26		VERIFY HT. W/ CURTAIN WALL MFR.	E101A
E101B	3'-0" x 8'-10"	K	ALUM./GL.	G1	2 1/2"x 7 1/4"	G	ALUM.		16/A9.04	22/A9.04	01		VERIFY HT. W/ CURTAIN WALL MFR.	E101B
E101C	7'-6" x 9'-0"	N	STEEL	-	-	-	-		10/A9.04	02/A6.04	06	90 MIN.	OVERHEAD COILING DOOR	E101C
E102A	3'-0" + 1'-0" x 8'-10"	M	S.C.P.L.	G8	2"x5 3/4"	3	H.M.		11/A9.04	23/A9.04	11	45 MIN.		E102A
E102B	3'-0" + 1'-0" x 8'-10"	M	S.C.P.L.	G8	2"x5 3/4"	3	H.M.		11/A9.04	23/A9.04	11	45 MIN.		E102B
E105	3'-0" x 8'-10"	A	S.C.P.L.	-	2"x5 3/4"	A	H.M.	04/A9.04	11,6/A9.04	05/A9.04	16			E105
E106	3'-0" x 8'-10"	B	S.C.P.L.	G5	2"x5 3/4"	1	H.M.		11/A9.04	23/A9.04	02			E106
E107	3'-0" x 8'-10"	B	S.C.P.L.	G5	2"x5 3/4"	1	H.M.		11/A9.04	23/A9.04	02			E107
E108	3'-0" x 8'-10"	B	S.C.P.L.	G5	2"x5 3/4"	1	H.M.		11/A9.04	23/A9.04	02			E108
E109	3'-0" x 8'-10"	B	S.C.P.L.	G5	2"x5 3/4"	1	H.M.		11/A9.04	23/A9.04	02			E109
E110	3'-0" x 8'-10"	B	S.C.P.L.	G5	2"x5 3/4"	1	H.M.		11/A9.04	23/A9.04	02			E110
E111	3'-0" x 8'-10"	B	S.C.P.L.	G5	2"x5 3/4"	1	H.M.		11/A9.04	23/A9.04	02			E111
E112	3'-0" x 8'-10"	B	S.C.P.L.	G5	2"x5 3/4"	1	H.M.		11/A9.04	23/A9.04	02			E112
E114	3'-0" x 8'-10"	B	S.C.P.L.	G5	2"x5 3/4"	1	H.M.		11/A9.04	23/A9.04	02			E114
E115	3'-0" x 8'-10"	A	S.C.P.L.	-	2"x5 3/4"	1	H.M.		11/A9.04	23/A9.04	03	45 MIN.		E115
E116	3'-0" x 7'-0"	A	H.M.	-	2"x5 3/4"	1	H.M.		12/A9.04	27/A9.04	13	45 MIN.		E116
E117	3'-0" x 8'-10"	B	S.C.P.L.	G5	2"x5 3/4"	1	H.M.		11/A9.04	23/A9.04	16			E117
E118	3'-0" x 8'-10"	B	S.C.P.L.	G5	2"x5 3/4"	1	H.M.		11/A9.04	23/A9.04	16			E118
E119	3'-0" x 8'-10"	-	-	-	2"x5 3/4"	1	H.M.		11/A9.04	23/A9.04			CASED OPENING	E119
E120	3'-0" x 8'-10"	A	S.C.P.L.	-	2"x5 3/4"	1	H.M.		11/A9.04	23/A9.04	16			E120
E121	3'-0" x 8'-10"	B	S.C.P.L.	G5	2"x5 3/4"	1	H.M.		11/A9.04	23/A9.04	16			E121
E123	3'-0" x 8'-10"	B	S.C.P.L.	G5	2"x5 3/4"	1	H.M.		11/A9.04	23/A9.04	17			E123
E124	3'-0" x 8'-10"	B	S.C.P.L.	G5	2"x5 3/4"	1	H.M.		11/A9.04	23/A9.04	17			E124
E125	3'-0" x 8'-10"	B	S.C.P.L.	G5	2"x5 3/4"	1	H.M.		11/A9.04	23/A9.04	17			E125
E126	3'-0" x 7'-0"	A	H.M.	-	2"x6 3/4"	4	H.M.		16/A9.04	22/A9.04	19			E126
E127	3'-0" x 8'-10"	A	S.C.P.L.	-	2"x5 3/4"	1	H.M.		11/A9.04	23/A9.04	08	45 MIN.		E127
E128A	(PR) 3'-0" x 8'-10"	A	S.C.P.L.	-	2"x5 3/4"	1	H.M.		11/A9.04	23/A9.04	15	45 MIN.		E128A
E128B	3'-0" x 8'-10"	A	S.C.P.L.	-	2"x5 3/4"	1	H.M.		11/A9.04	23/A9.04	03	45 MIN.		E128B
E129	3'-0" x 8'-10"	A	S.C.P.L.	-	2"x5 3/4"	A	H.M.		11,6/A9.04	23/A9.04	16			E129
E130	3'-0" x 8'-10"	B	S.C.P.L.	G5	2"x5 3/4"	1	H.M.		11/A9.04	23/A9.04	02			E130
E131	3'-0" x 8'-10"	B	S.C.P.L.	G5	2"x5 3/4"	1	H.M.		11/A9.04	23/A9.04	02			E131
E132	3'-0" x 8'-10"	B	S.C.P.L.	G5	2"x5 3/4"	1	H.M.		11/A9.04	23/A9.04	02			E132
E133	3'-0" x 8'-10"	B	S.C.P.L.	G5	2"x5 3/4"	1	H.M.		11/A9.04	23/A9.04	02			E133
E134	3'-0" x 8'-10"	B	S.C.P.L.	G5	2"x5 3/4"	1	H.M.		11/A9.04	23/A9.04	02			E134
E135	3'-0" x 8'-10"	B	S.C.P.L.	G5	2"x5 3/4"	1	H.M.		11/A9.04	23/A9.04	02			E135
E136	3'-0" x 8'-10"	B	S.C.P.L.	G5	2"x5 3/4"	1	H.M.		11/A9.04	23/A9.04	02			E136
E137	3'-0" x 8'-10"	B	S.C.P.L.	G5	2"x5 3/4"	1	H.M.		11/A9.04	23/A9.04	02			E137
E138A	3'-0" x 8'-10"	B	S.C.P.L.	G5	2"x5 3/4"	1	H.M.		11/A9.04	23/A9.04	16			E138A
E138B	3'-0" x 7'-0"	A	H.M.	-	2"x6 3/4"	4	H.M.	29/A9.04	7/A9.04	19/A9.04	27			E138B

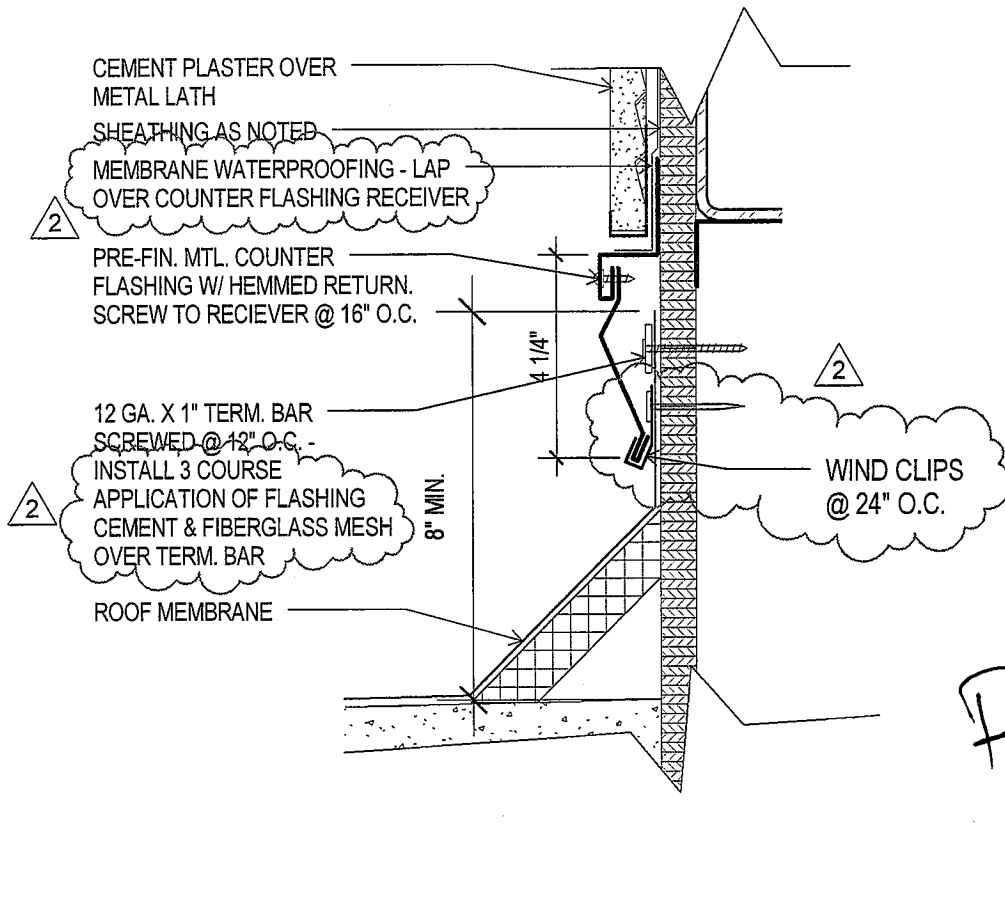


BAY ARCHITECTS
 18201 GULF FREEWAY
 P.O. BOX 891209
 HOUSTON, TEXAS 77289
 281.286.6605

A2.03, DOOR SCHEDULE AREA "E"

Allied Health Addition
 San Jacinto College District

ADD-04-SK02
 PROJ-0822
 06/04/2010
 A2.03



1

PLASTER WALL TO ROOF FLASHING DETAIL (ADD-04)

3" = 1'-0"

A4.02, ROOF DETAILS

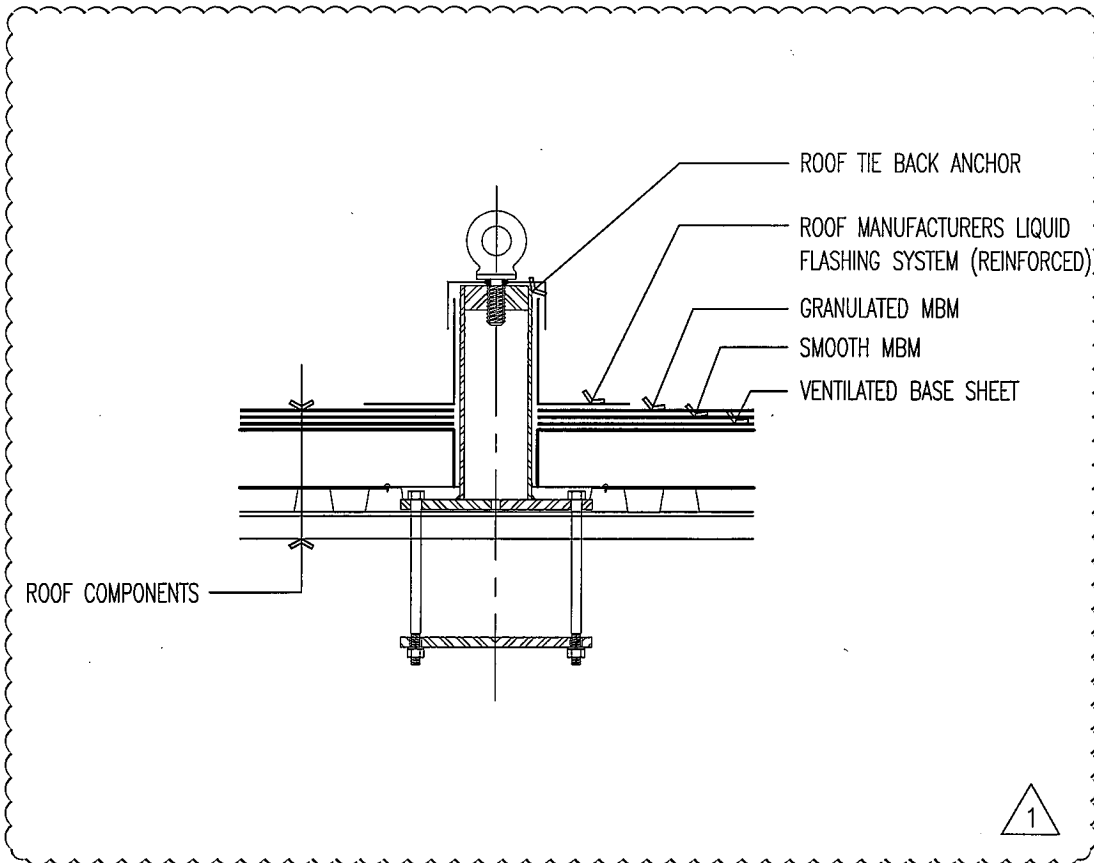


BAY ARCHITECTS
 18201 GULF FREEWAY
 P.O. BOX 891209
 HOUSTON, TEXAS 77289
 281.286.6605

Allied Health Addition
 San Jacinto College District

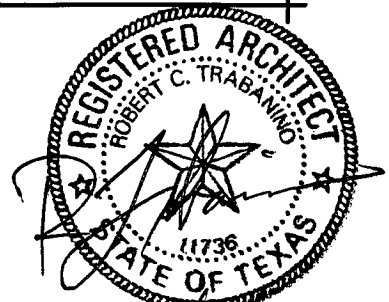
ADD-04-SK03

PROJ-0822
 3" = 1'-0"
 06/04/2010
 A4.02



9 | **ROOF TIE BACK ANCHOR**

X-Z15.DWG
1" = 1'-0"



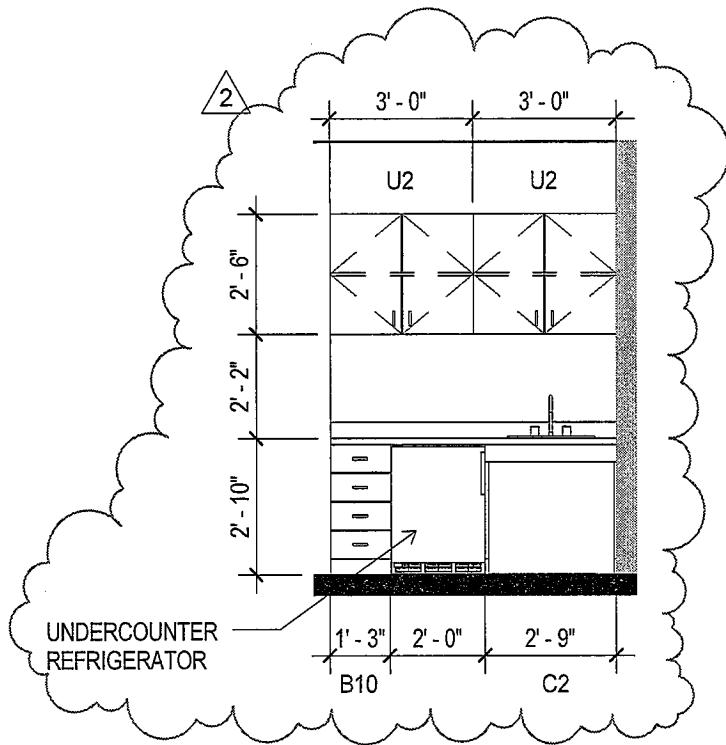
A4.03, ROOF DETAILS



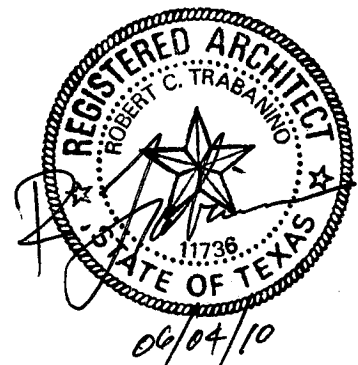
BAY ARCHITECTS
18201 GULF FREEWAY
P.O. BOX 891209
HOUSTON, TEXAS 77289
281.286.6605

ALLIED HEALTH ADDITION
SAN JACINTO COLLEGE

ADD-04-SK04
PROJ-0822
1"=1'-0"
06/04/2010
A4.03



15 CONFERENCE ROOM.
 1/4" = 1'-0"

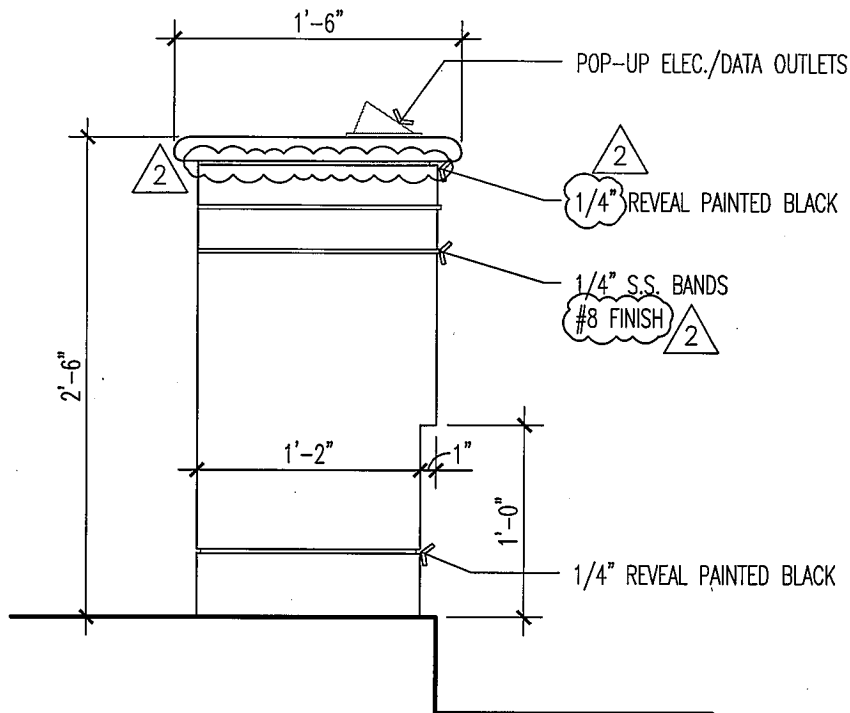


CONFERENCE RM. CASE WORK ELEVATION



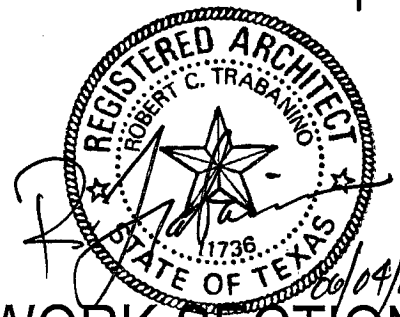
BAY ARCHITECTS
 18201 GULF FREEWAY
 P.O. BOX 891209
 HOUSTON, TEXAS 77289
 281.286.6605

Allied Health Addition San Jacinto College District	ADD-04-SK05 PROJ-0822 1/4" = 1'-0" 06/04/10 A8.01
--	---



17 RIBBON TABLE ELEVATION

A8.03-0822
1"=1'-0"



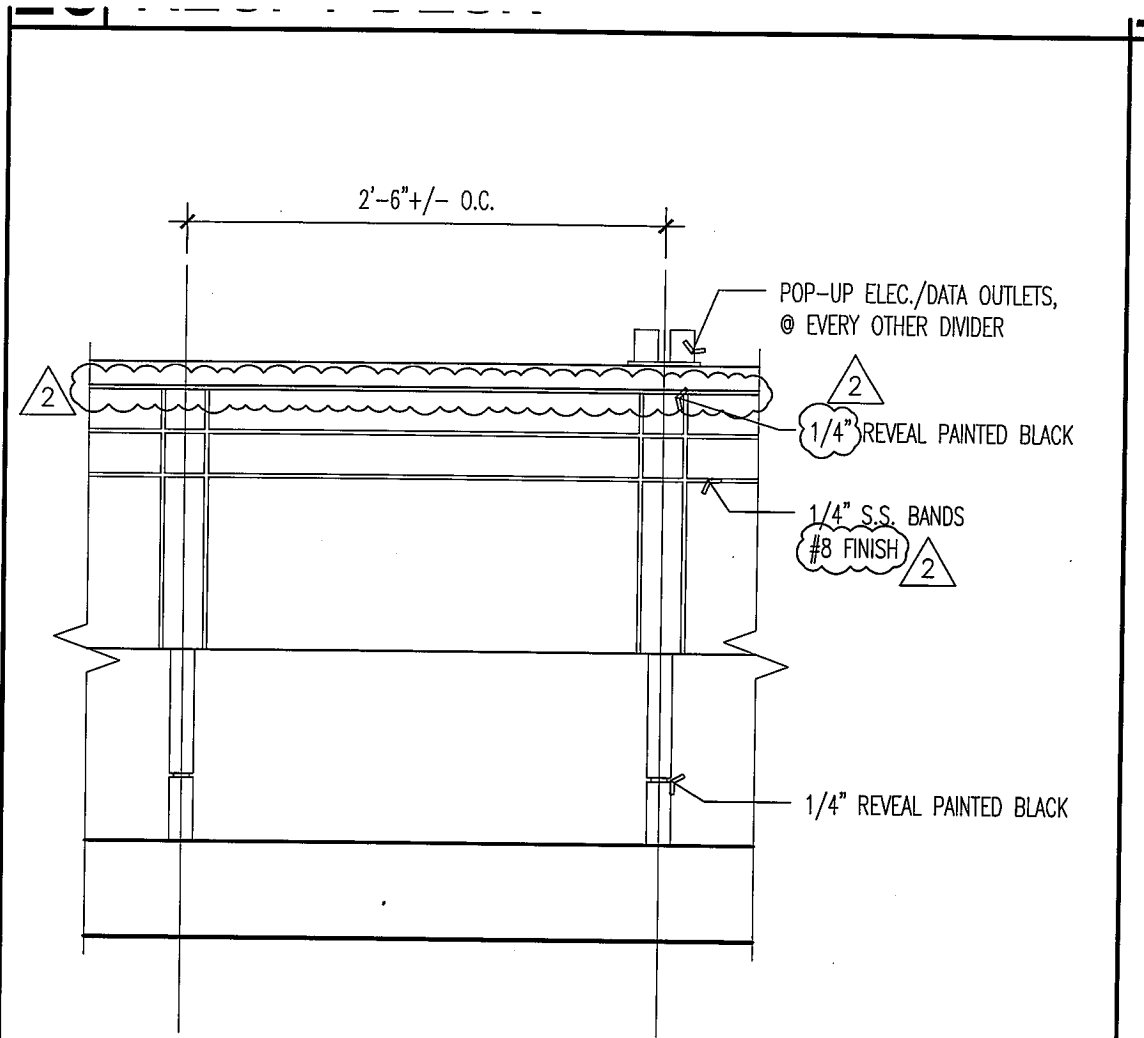
A8.03, CASEWORK SECTIONS



BAY ARCHITECTS
18201 GULF FREEWAY
P.O. BOX 891209
HOUSTON, TEXAS 77289
281.286.6605

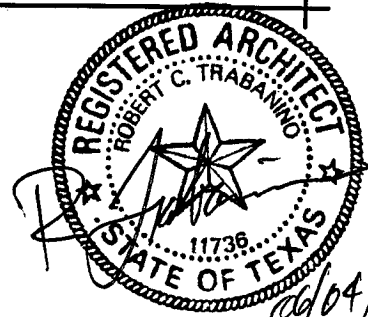
ALLIED HEATH ADDITION
SAN JACINTO COLLEGE

ADD-04-SK06
PROJ-0822
1/2"=1'-0"
06/04/2010
A8.03



18 RIBBON TABLE ELEVATION

A8.03-0822
1"=1'-0"



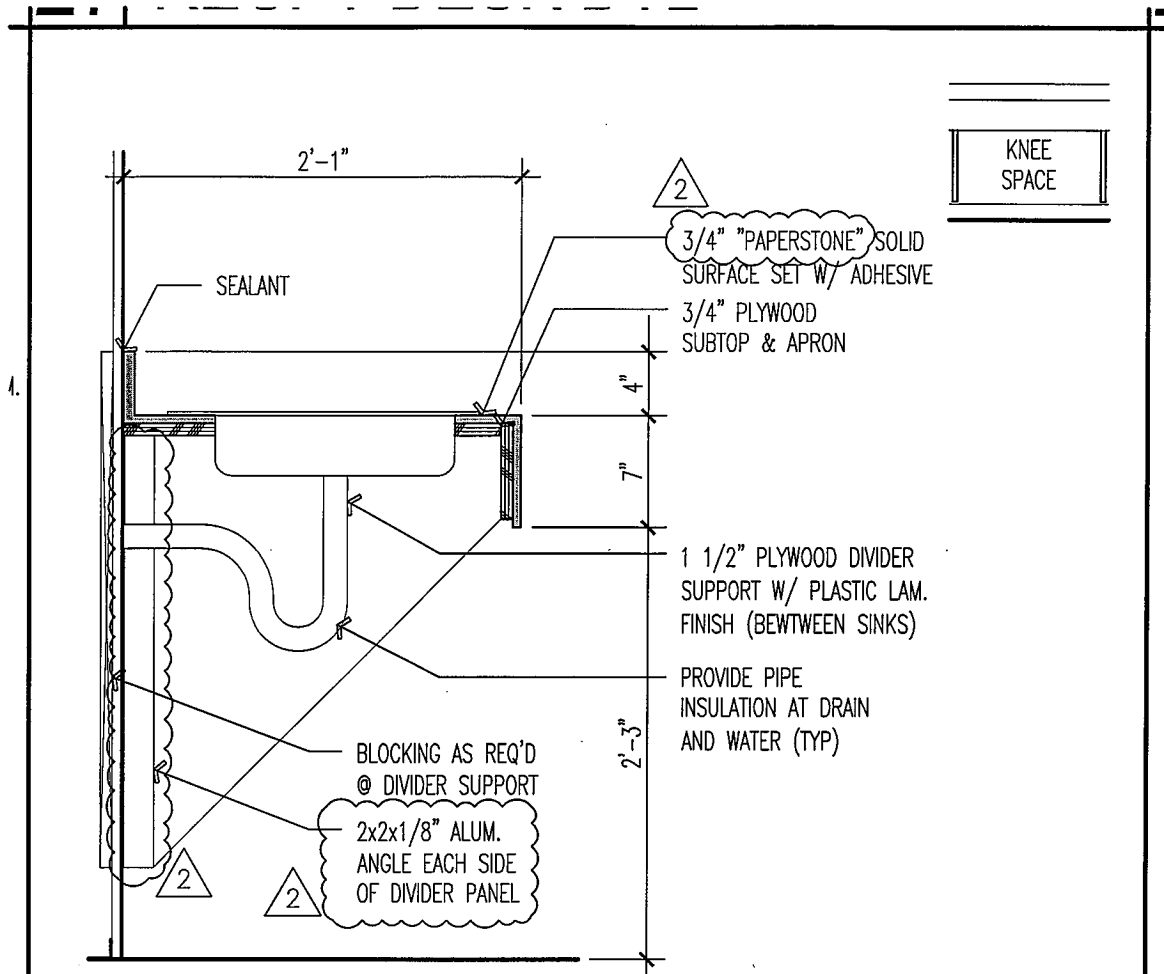
A8.03, CASEWORK SECTIONS



BAY ARCHITECTS
18201 GULF FREEWAY
P.O. BOX 891209
HOUSTON, TEXAS 77289
281.286.6605

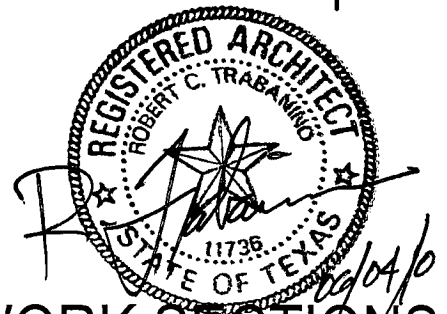
ALLIED HEATH ADDITION
SAN JACINTO COLLEGE

ADD-04-SK07
PROJ-0822
1/2"=1'-0"
6/04/2010
A8.03



21 RESTROOM COUNTERTOP

A8.03-0822
1" = 1'-0"



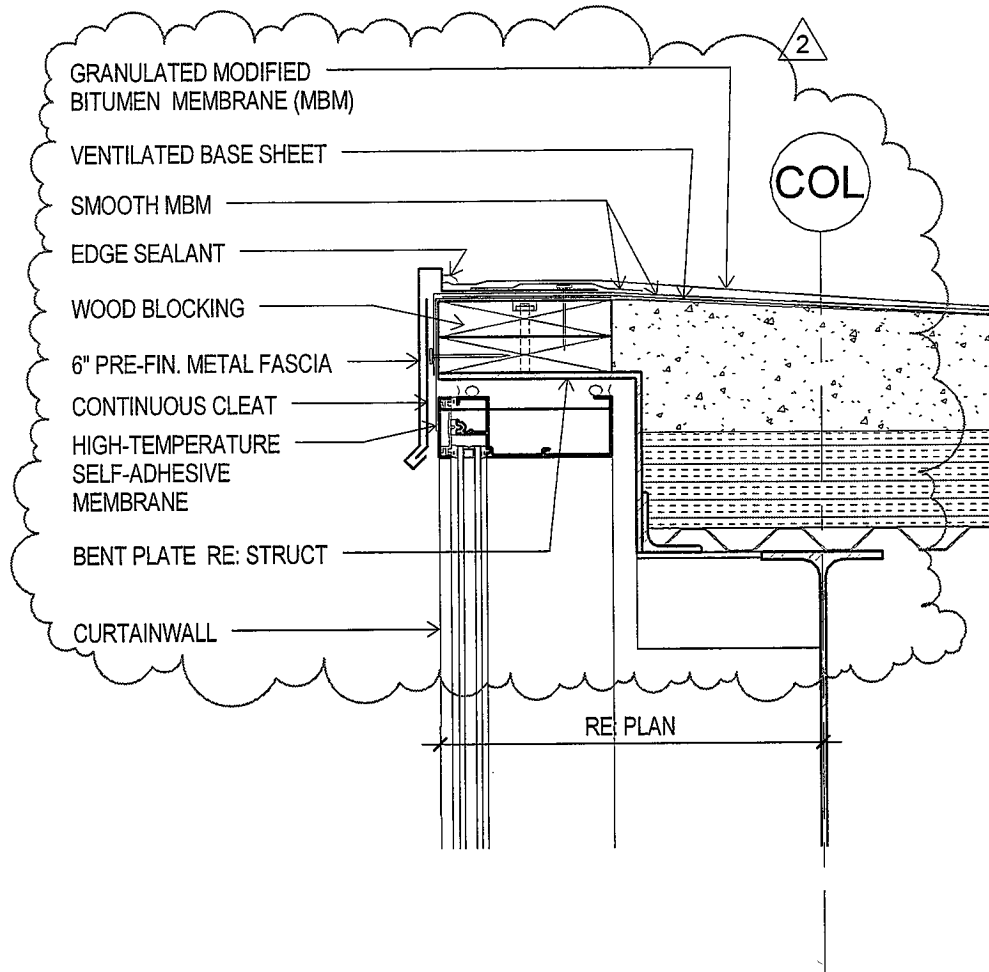
A8.03, CASEWORK SECTIONS



BAY ARCHITECTS
18201 GULF FREEWAY
P.O. BOX 891209
HOUSTON, TEXAS 77289
281.286.6605

ALLIED HEATH ADDITION
SAN JACINTO COLLEGE

ADD-04-SK08
PROJ-0822
1/2"=1'-0"
06/04/2010
A8.03



10 ROOF EDGE AT CURTAIN WALL.

1 1/2" = 1'-0"

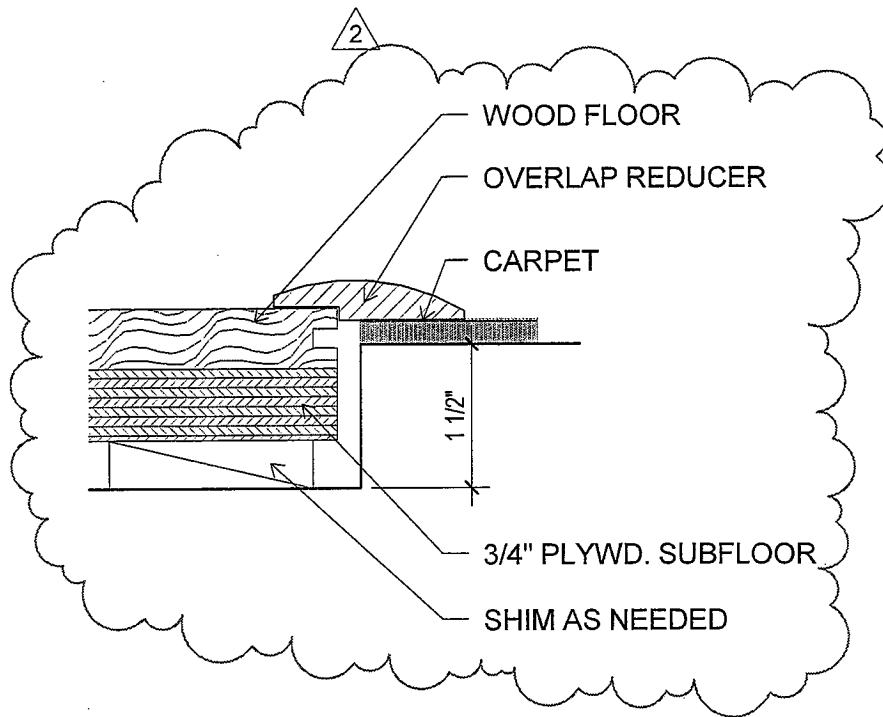


ROOF EDGE @ CURTAIN WALL

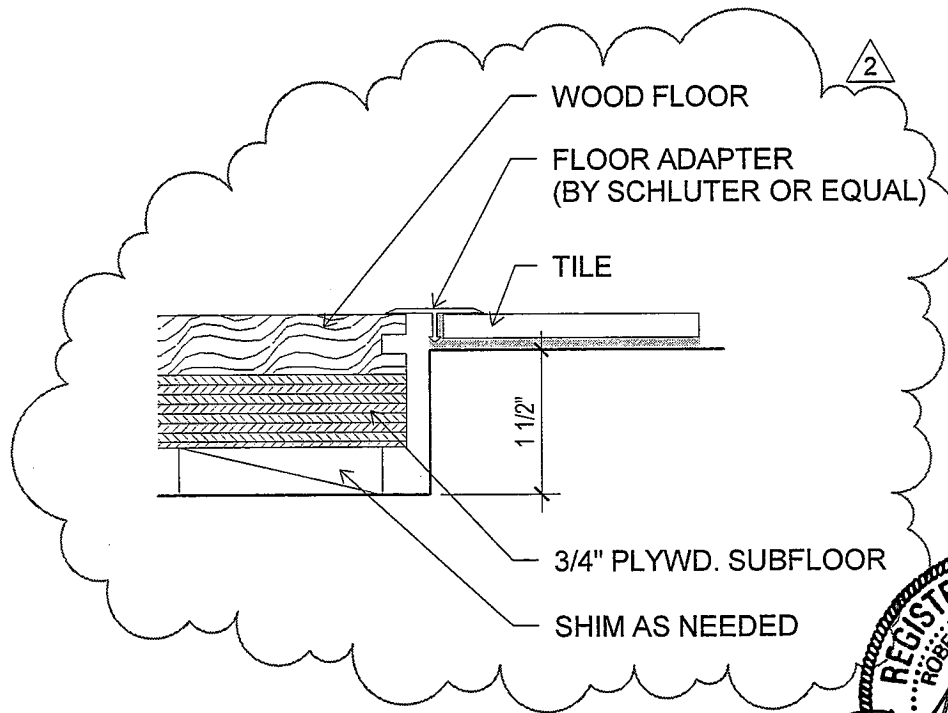


BAY ARCHITECTS
 18201 GULF FREEWAY
 P.O. BOX 891209
 HOUSTON, TEXAS 77289
 281.286.6605

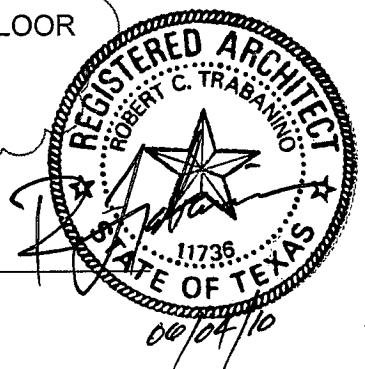
Allied Health Addition San Jacinto College District	ADD-04-SK09 PROJ-0822 1 1/2" = 1'-0" 06/04/10 A4.02
--	---



6 TRANSITION -CARPET TO WOOD.
6" = 1'-0"



5 TRANSITION -TILE TO WOOD.
6" = 1'-0"

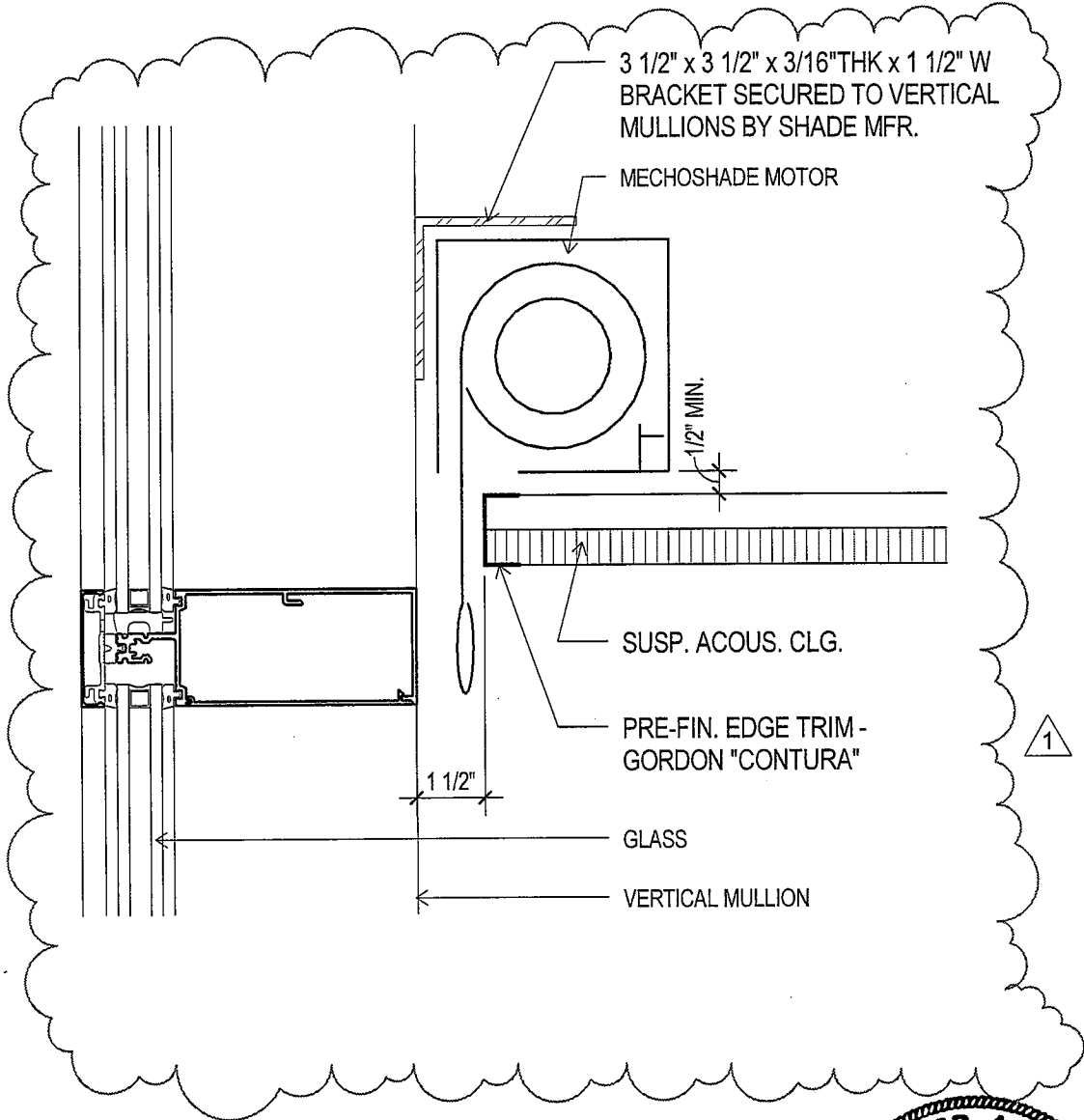


A11.01 WOOD TRANSITION DETAILS



BAY ARCHITECTS
18201 GULF FREEWAY
P.O. BOX 891209
HOUSTON, TEXAS 77289
281.286.6605

Allied Health Addition San Jacinto College District	ADD-04-SK10 PROJ-0822 6" = 1'-0" 06/04/10 A11.01
--	--



2 MECHOSHADE DETAIL.
3" = 1'-0"

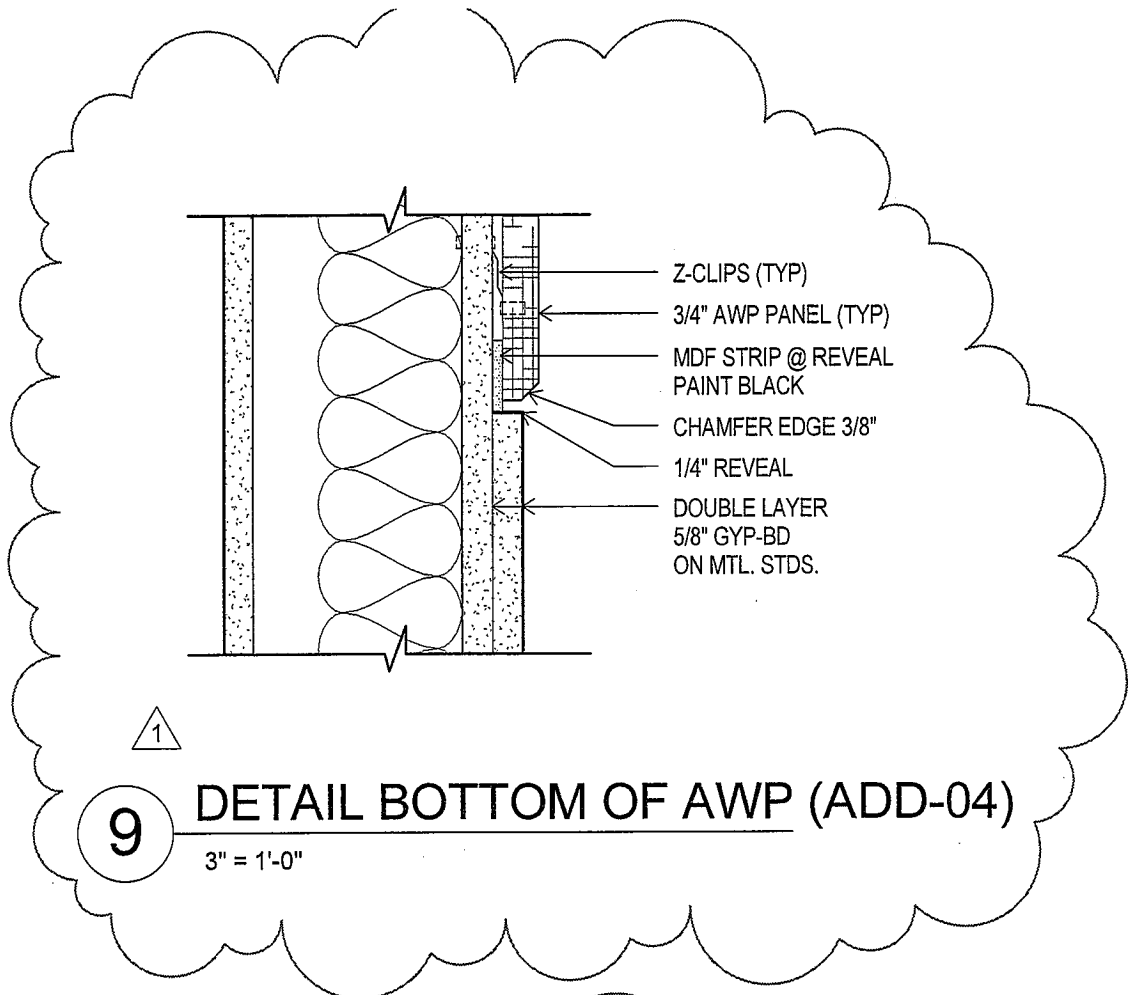


MECHOSHADE CEILING DETAIL



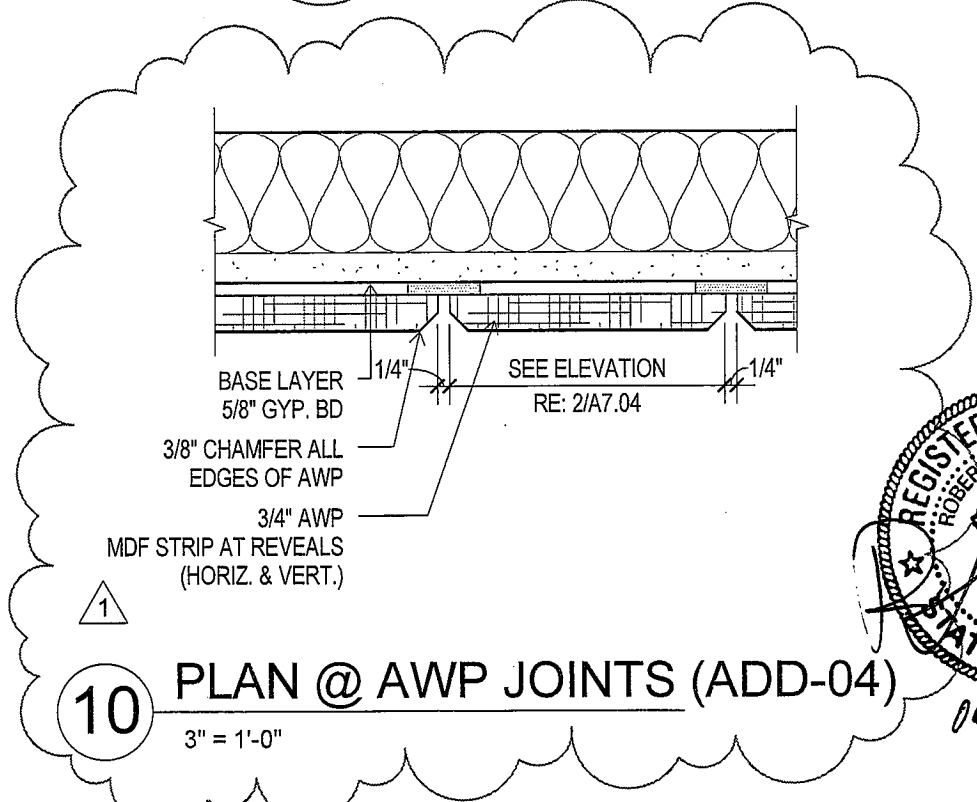
BAY ARCHITECTS
18201 GULF FREEWAY
P.O. BOX 891209
HOUSTON, TEXAS 77289
281.286.6605

Allied Health Addition San Jacinto College District	ADD-04-SK11 PROJ-0822 3" = 1'-0" 06/04/10 A10.02
--	--



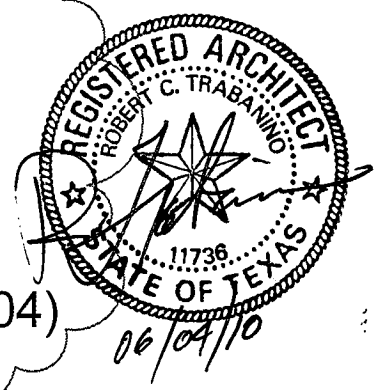
1

9 **DETAIL BOTTOM OF AWP (ADD-04)**
 3" = 1'-0"



1

10 **PLAN @ AWP JOINTS (ADD-04)**
 3" = 1'-0"

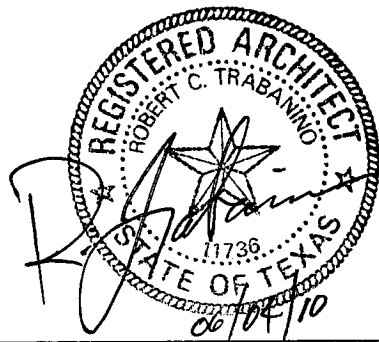
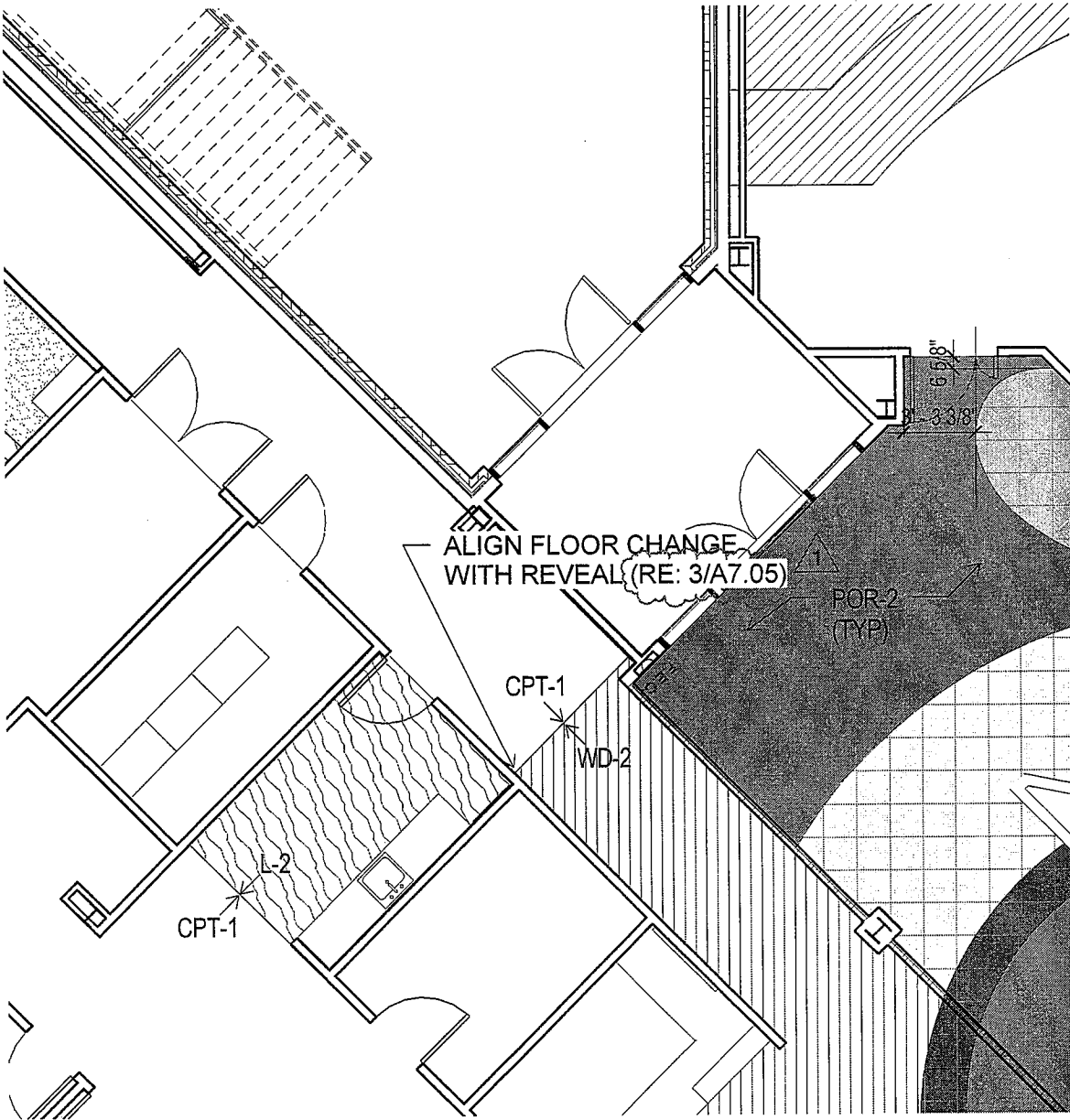


A7.05, INTERIOR ELEVATIONS



BAY ARCHITECTS
 18201 GULF FREEWAY
 P.O. BOX 891209
 HOUSTON, TEXAS 77289
 281.286.6605

Allied Health Addition San Jacinto College District	ADD-04-SK12 PROJ-0822 3" = 1'-0" 6/4/2010 A7.05
--	---



1st Floor Patt



BAY ARCHITECTS
 18201 GULF FREEWAY
 P.O. BOX 891209
 HOUSTON, TEXAS 77289
 281.286.6605

Allied Health Addition San Jacinto College District	ADD-04-SK13 PROJ-0822 1/8" = 1'-0" 06/04/2010 A11.01
--	--

5A

8' - 2"

PRE-FINISHED STANDING SEAM METAL ROOF

ROOF UNDERLAYMENT ON 4" RIGID INSULATION

5/8" DECK BOARD

1 1/2" METAL DECK
RE:STRUCTURAL DWG'S.

ROOF DECK EDGE ANGLE - RE:
STRUCTURAL DWG'S

PRE FINISHED METAL
BOX GUTTER

TRT'D. WOOD BLOCKING
COUNTERSINK BOLT TO
STEEL FRAMING MEMBERS
@ 24" O.C. MIN.

HEAVY DUTY GUTTER BRACKETS
@ 36" O.C. MAX.

STEEL CHANNEL.
RE:STRUCTURAL DWG'S.

STEEL RAFTER - RE: STRUCT.

CONT. FORMED PRE-FINISHED
MTL. FASCIA TRIM

SUSPENDED CEMENT PLASTER
SOFFIT ON METAL LATH

1" ALUM. VENT SCREED

ALUM. CURTAIN WALL SYSTEM
WITH SCHEDULED GLAZING

PRE FINISHED METAL DOWNSPOUT HANGER

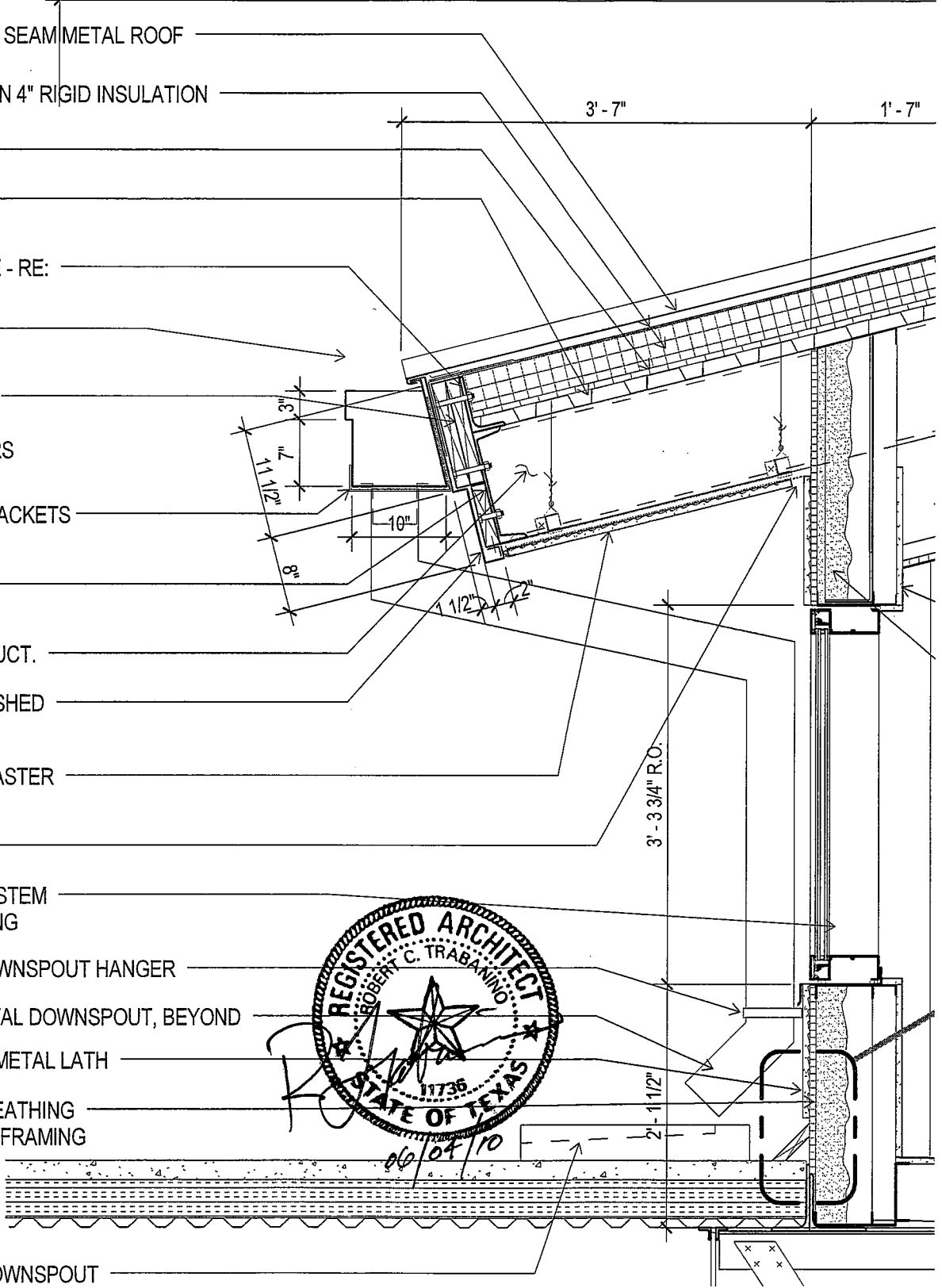
5" X 6" PRE FINISHED METAL DOWNSPOUT, BEYOND

1" CEMENT PLASTER ON METAL LATH

5/8" WATERPROOFED SHEATHING
ON LT. GAUGE MTL. STUD FRAMING

2

SPLASH BLOCK AT EA. DOWNSPOUT

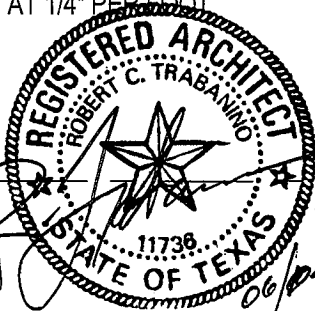
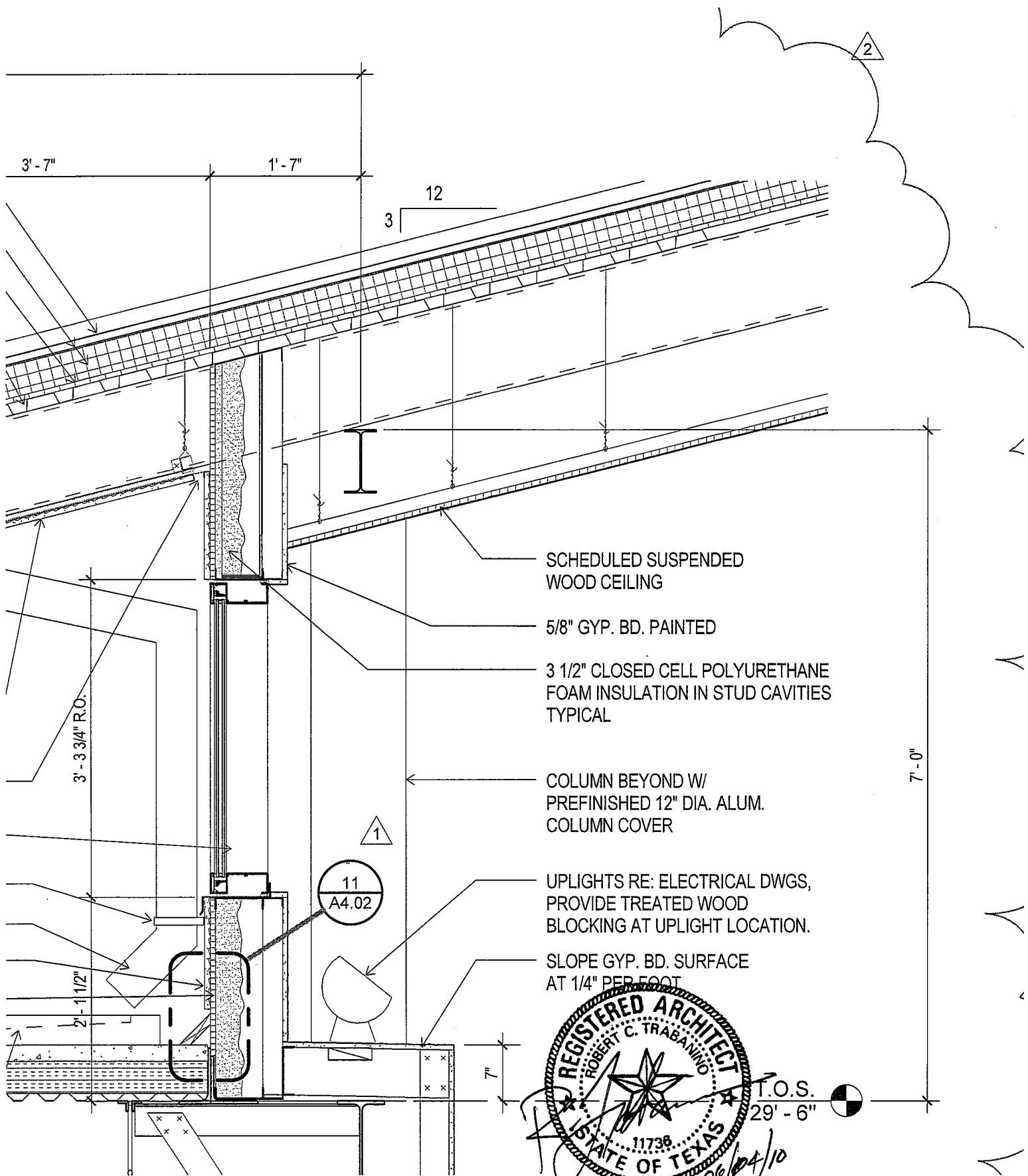


SECTION THRU CLERESTORY



BAY ARCHITECTS
 18201 GULF FREEWAY
 P.O. BOX 891209
 HOUSTON, TEXAS 77289
 281.286.6605

Allied Health Addition San Jacinto College District	ADD-04-SK14A PROJ-0822 3/4" = 1'-0" 06/04/2010 A4.02
--	--



SECTION THRU CLERESTORY

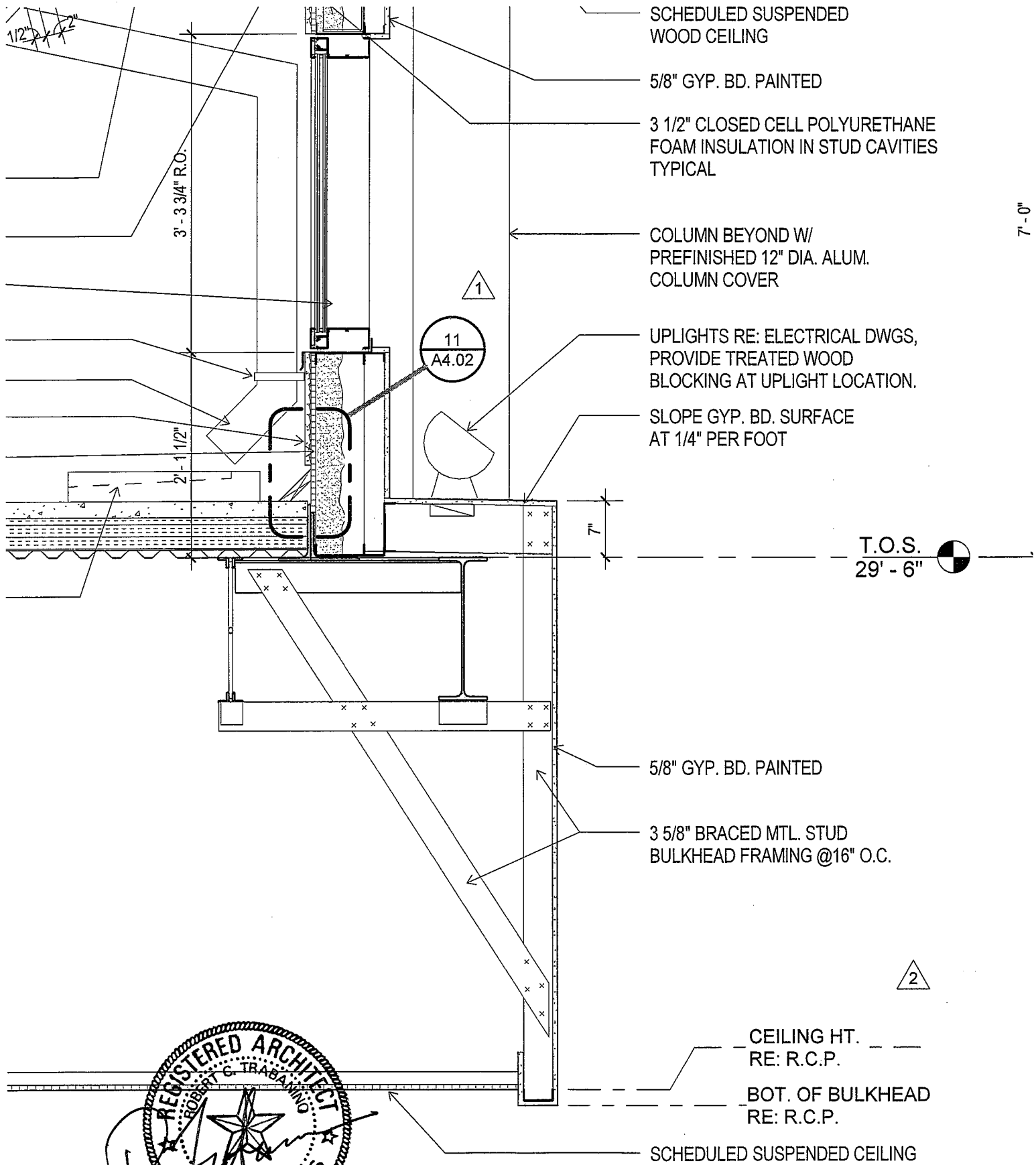


BAY ARCHITECTS
 18201 GULF FREEWAY
 P.O. BOX 891209
 HOUSTON, TEXAS 77289
 281.286.6605

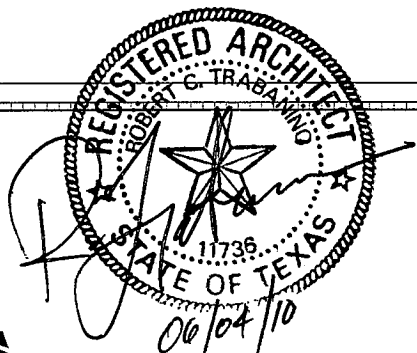
Allied Health Addition
 San Jacinto College District

ADD-04-SK14B

PROJ-0822
 3/4" = 1'-0"
 06/04/10



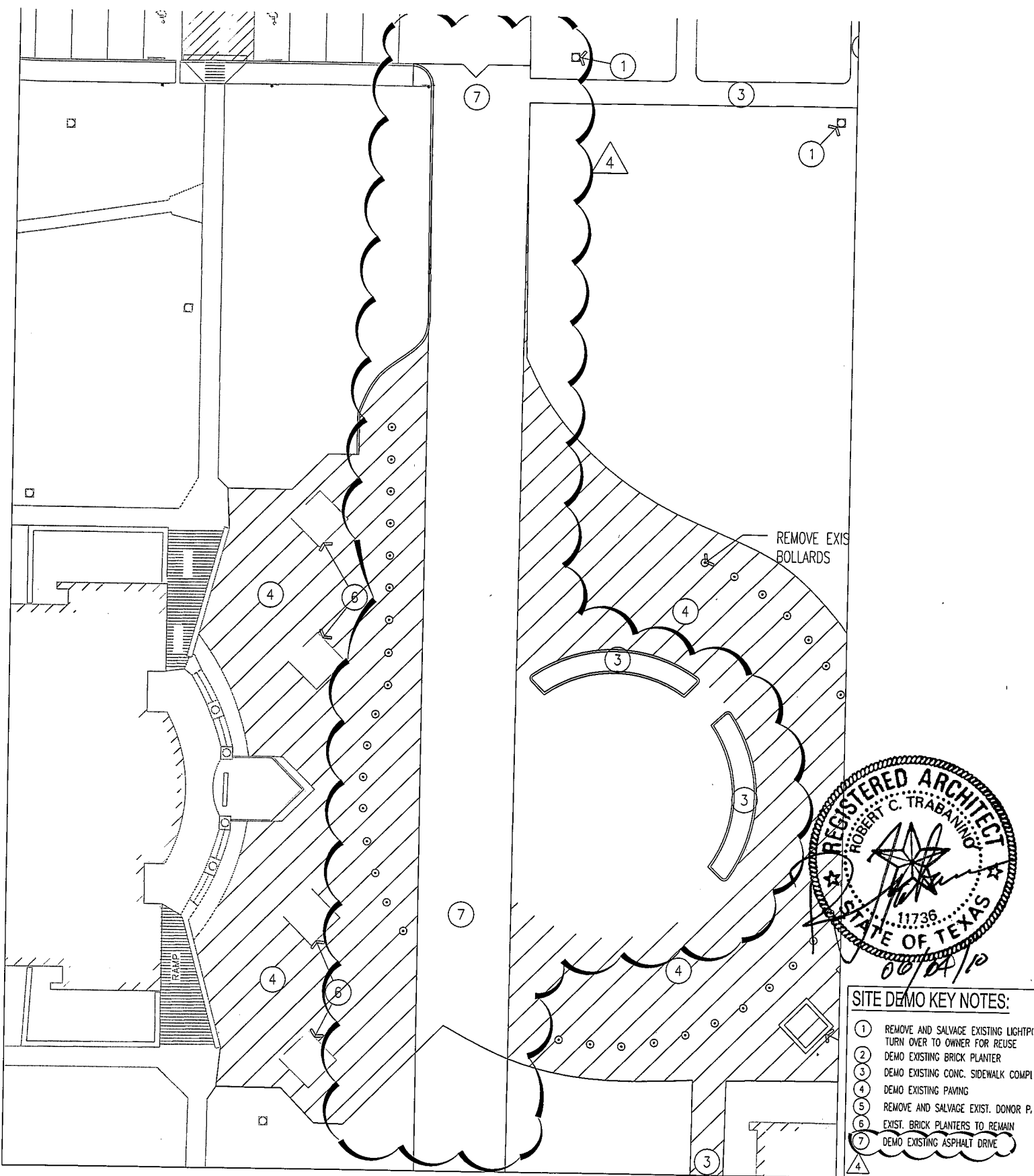
7'-0"



BAY ARCHITECTS
 18201 GULF FREEWAY
 P.O. BOX 891209
 HOUSTON, TEXAS 77289
 281.286.6605

SECTION THRU CLERESTORY

Allied Health Addition San Jacinto College District	ADD-04-SK14C
	PROJ-0822 3/4" = 1'-0" 06/04/10



REMOVE EXIS BOLLARDS

SITE DEMO KEY NOTES:

- ① REMOVE AND SALVAGE EXISTING LIGHTPI TURN OVER TO OWNER FOR REUSE
- ② DEMO EXISTING BRICK PLANTER
- ③ DEMO EXISTING CONC. SIDEWALK COMPLI
- ④ DEMO EXISTING PAVING
- ⑤ REMOVE AND SALVAGE EXIST. DONOR P.
- ⑥ EXIST. BRICK PLANTERS TO REMAIN
- ⑦ DEMO EXISTING ASPHALT DRIVE

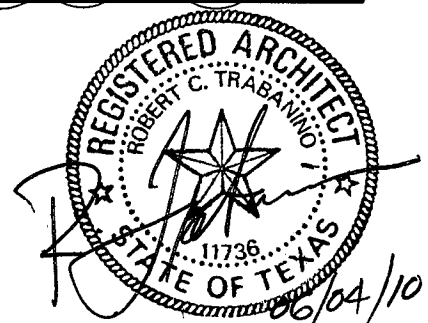
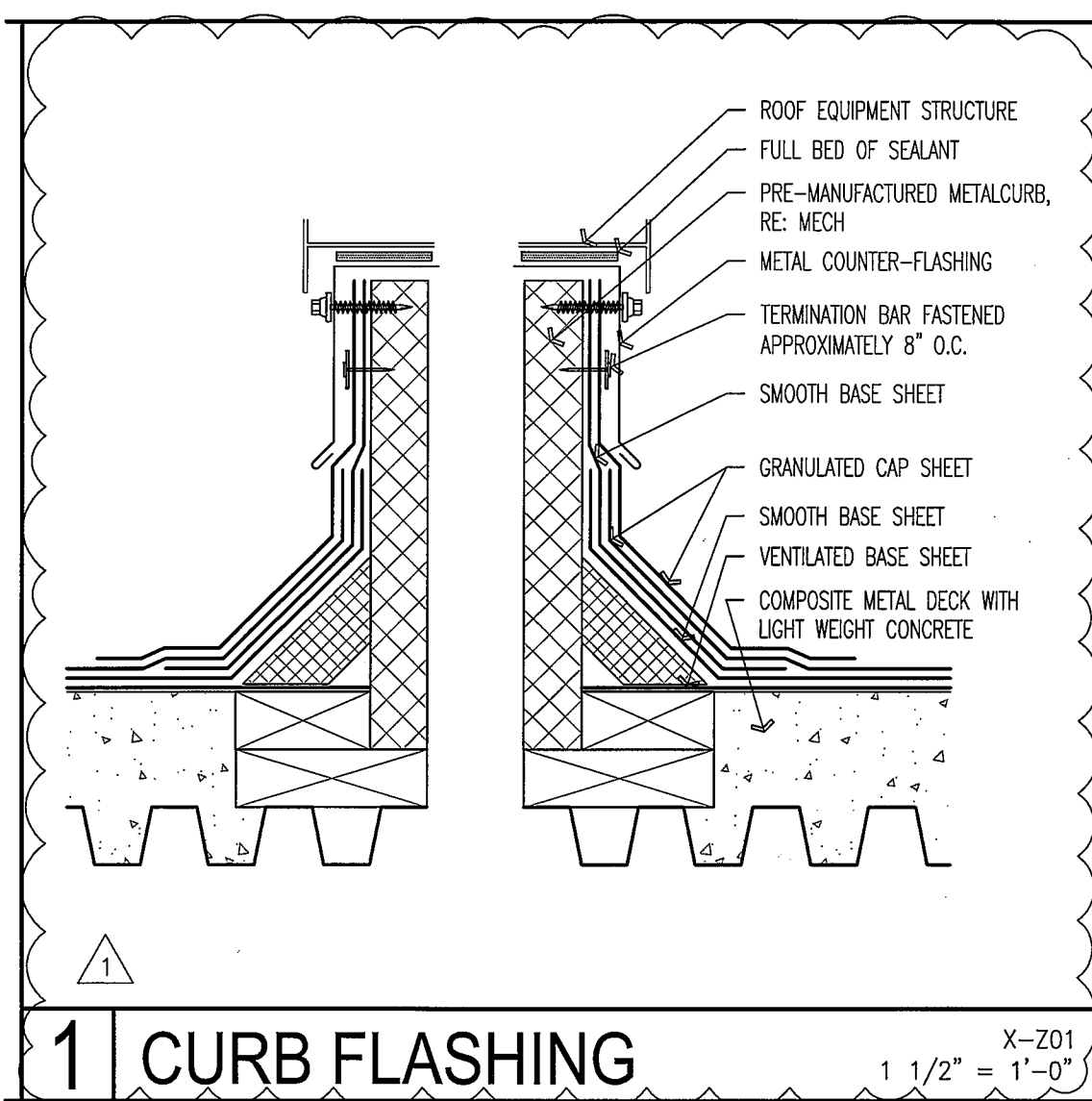
DEMO PLAN C1.00



BAY ARCHITECTS
 18201 GULF FREEWAY
 P.O. BOX 891209
 HOUSTON, TEXAS 77289
 281.286.6605

Allied Health Addition
 San Jacinto College District

ADD-04-SK15
 PROJ-0822
 1/32" = 1'-0"
 06/04/10



A4.03, ROOF DETAILS



BAY ARCHITECTS
 18201 GULF FREEWAY
 P.O. BOX 891209
 HOUSTON, TEXAS 77289
 281.286.6605

ALLIED HEALTH ADDITION
 SAN JACINTO COLLEGE

ADD-04-SK16
 PROJ-0822
 1"=1'-0"
 06/04/2010
 A4.03