



Bay Architects
 18201 Gulf Freeway
 Post Office Box 891209
 Houston, Texas 77289
 Tel 281.286.6605
 Fax 281.286.9606

ADDENDUM NO. 03
 May 12, 2009

Project: Three Elementary School Additions/Renovations
 Texas City Independent School District

Prepared by: Bay Architects, Inc.
 18201 Gulf Freeway
 Webster, Texas 77598
 (281) 286-6605



05/12/09

Bay Project No.: 0750, 0754 & 0755

Prepared for: Prospective Proposers

PART A NOTICE TO PROPOSERS

01. Receipt of this Addendum shall be acknowledged on the Proposal Form. Failure to do so may subject Proposers to disqualification. Each Proposer shall make necessary adjustments and submit his proposal with full knowledge of all modifications, clarification, and supplemental data included therein.
02. This Addendum forms part of the Contract Documents and shall be incorporated integrally therewith. Where provisions of the following supplemental data differ from those of previously issued documents, this Addendum shall govern.
03. The following Contract Documents have been issued to date delineating the Work (Project):

Construction Documents	March 11, 2009
Addenda No. 01	May 1, 2009
Addenda No. 02	May 7, 2009
04. This Addendum consists of ADD3-1 through ADD3-2; Sheet S4.1 Addendum 3 (30"x42").

PART B CHANGES TO PRIOR ADDENDA

05. None

PART C CHANGES TO THE PROJECT MANUAL

06. None

PART D CHANGES TO THE DRAWINGS

"Changes may be indicated on the enclosed 8 1/2 x 11 and/or 11" x 17" sheets."

Northside Elementary – Part "A"

07. None

Heights Elementary – Part “B”

08. Sheet S1.1 Foundation Plan, Part B
- a. Change the dimension from new column line E to the existing column line to the south from 1'-0" to 1'-7".
 - b. Change the dimension from col line D to Column line E from 12'-2 ¾" to 11'-7 ¾".
09. Sheet S2.1 Roof Framing Plan, Part B
- a. Change the dimension from new column line E to the existing column line to the south from 1'-0" to 1'-7".
 - b. Change the dimension from col line D to Column line E from 12'-2 ¾" to 11'-7 ¾".
10. Sheet S4.1 Concrete Details, Part B
- a. Delete Drawing S4.1 dated March 11, 2009, "Bid Set" and substitute new drawing S4.1 dated May 12, 2009, Addendum 3.
11. Sheet S5.1 Steel Details, Part B
- a. Sections 1, 2 and 2A,
 - i. Change section to show 2" gap between top of CMU and bottom of W beam.
 - ii. Change note "L6x3 ½ x 5/16 x 6" W/vertical slotted holes to allow 1" downward deflection of WBM (Typ)" to "L8x4x1/2 x6" with vertical slotted holes to allow 1" downward deflection of WBM (Typ)"

Roosevelt-Wilson Elementary – Part “C”

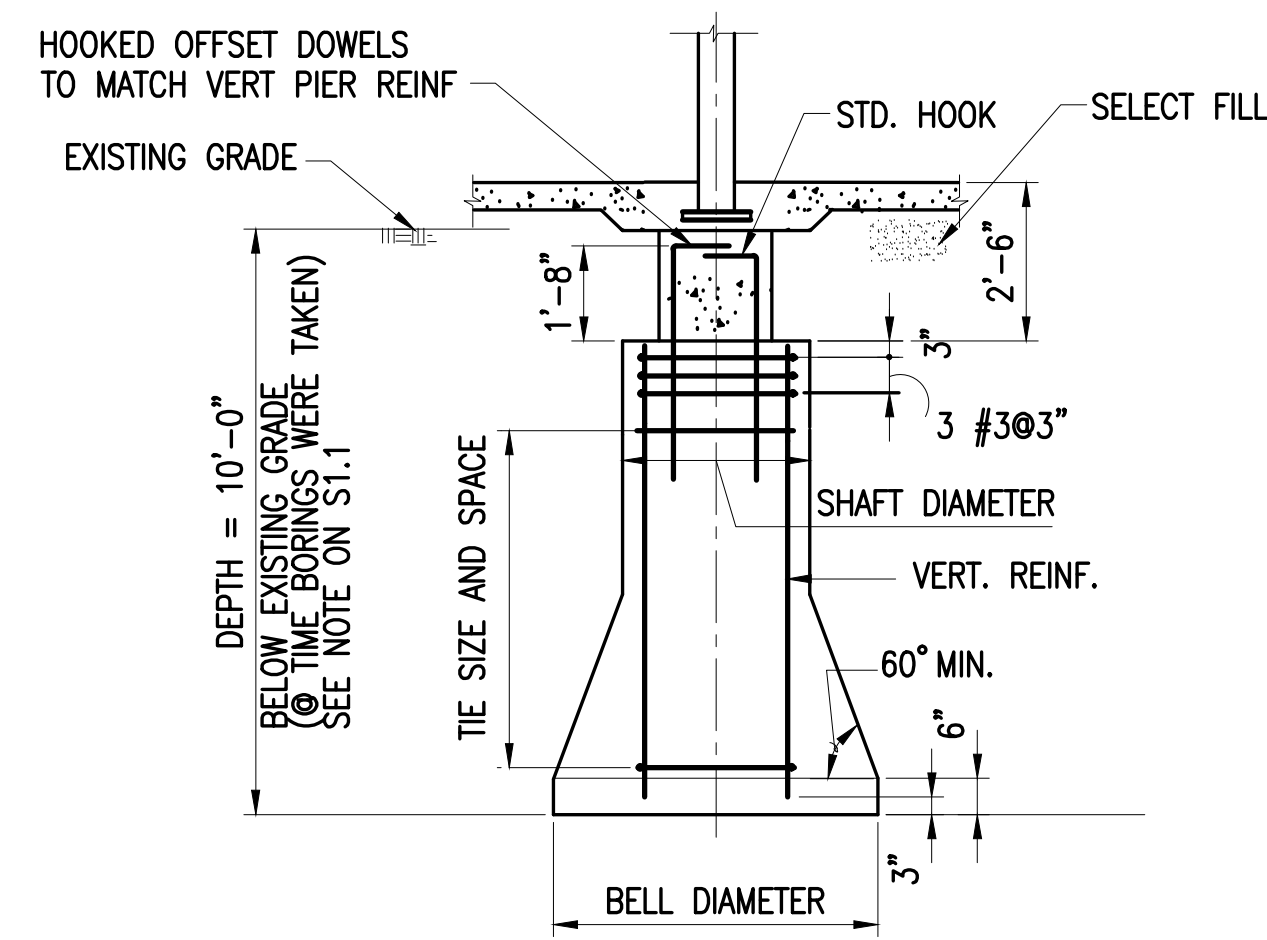
12. None

PART E NEW ISSUED DRAWING SHEETS

13. None

PART F RE-ISSUED DRAWING SHEETS

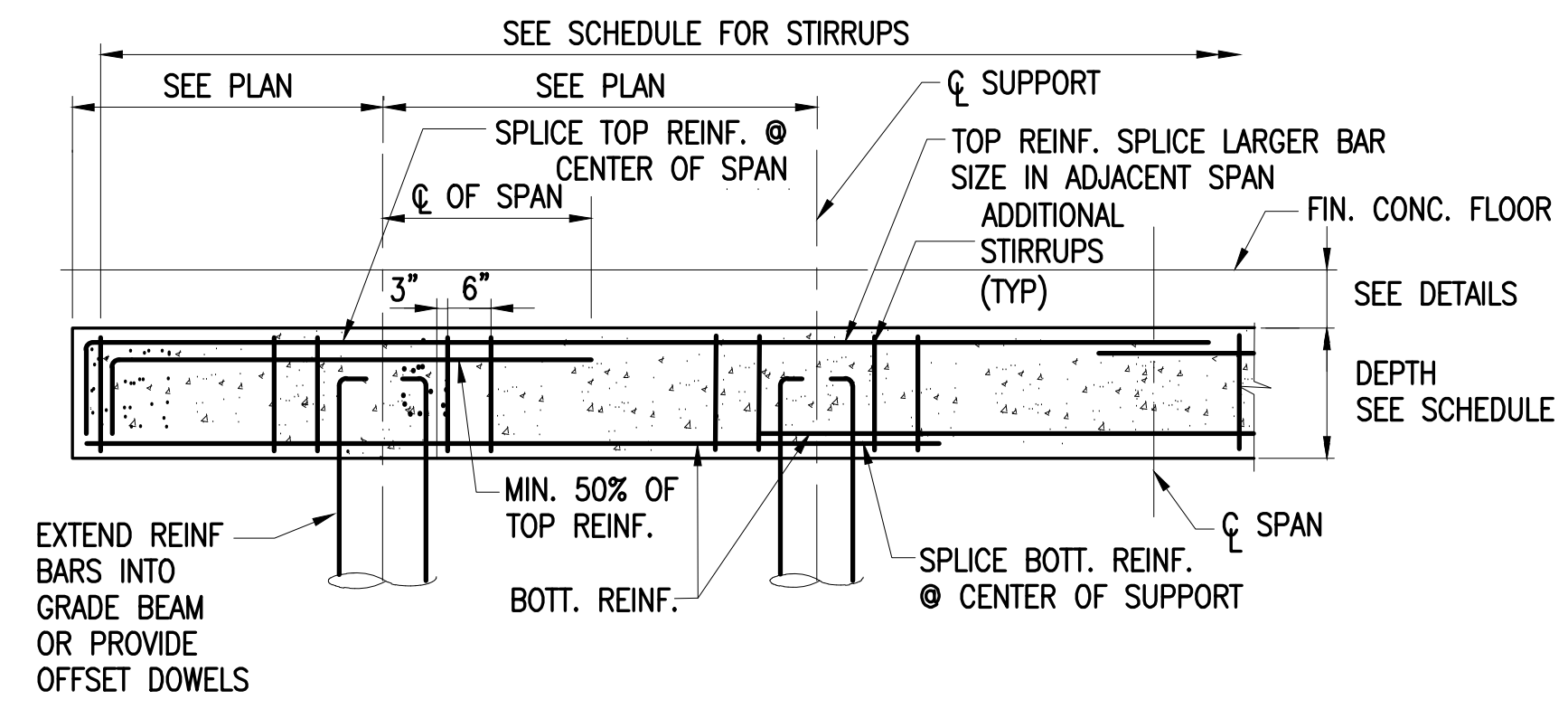
14. Sheet S4.1 Concrete Details, Part B



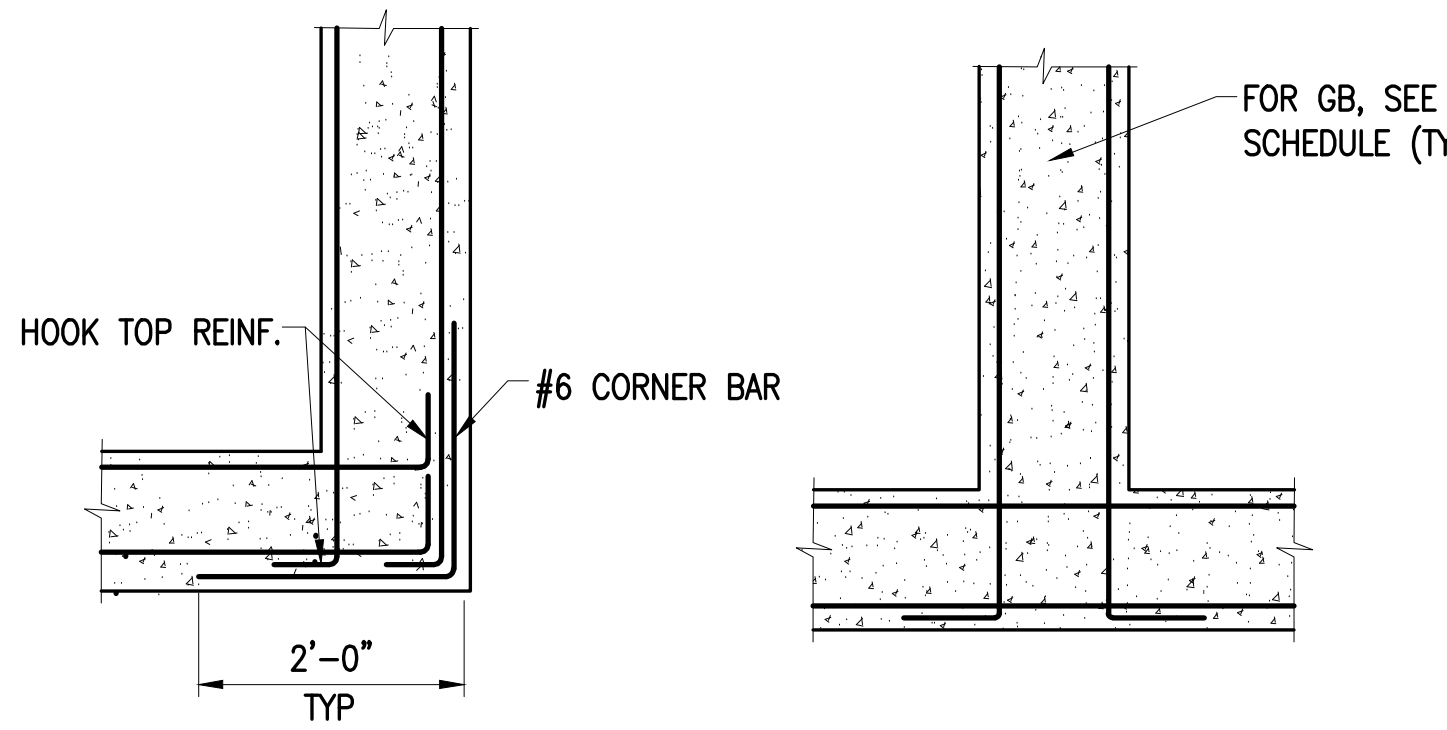
1 DETAIL (DRILLED PIER)
S1.1 N.T.S.

DRILLED PIER SCHEDULE					
MARK	SHAFT DIAMETER*	BELL DIAMETER*	VERT. REINF.	TIES	REMARKS
P25					NOT USED
P30	1'-6"	3'-0"	6#5	#3@10"	
P35	1'-6"	3'-6"	6#5	#3@10"	
P40	1'-6"	4'-0"	6#5	#3@10"	
P45	2'-0"	4'-6"	6#7	#3@14"	
P50					NOT USED
P55					NOT USED

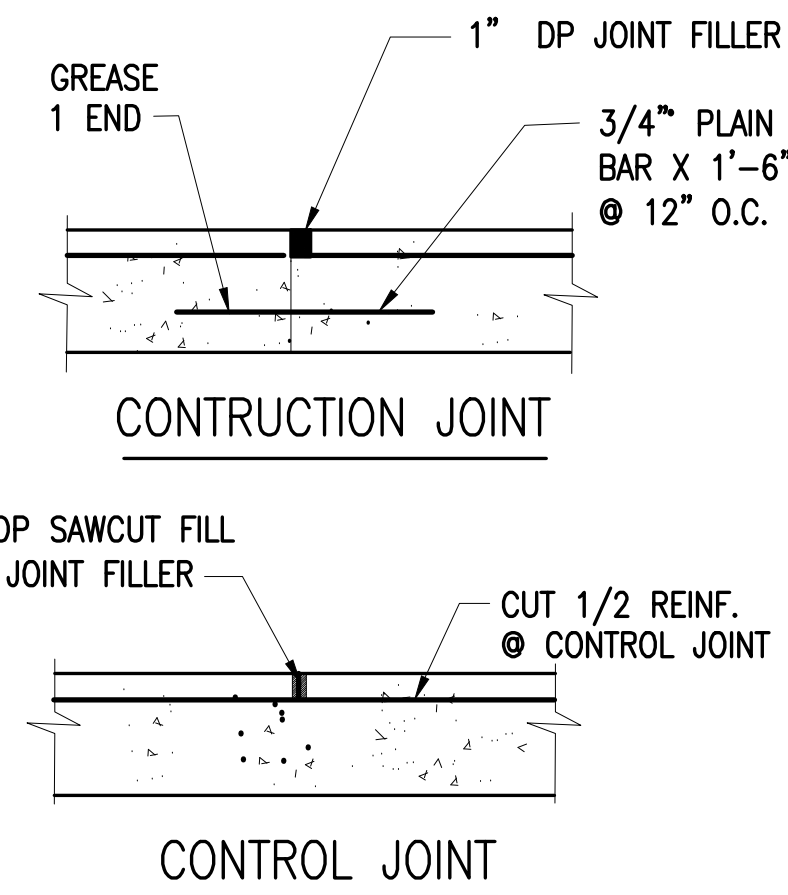
GRADE BEAM SCHEDULE						
MK	DEPTH (D)	WIDTH (W)	TOP REINF.	BOTT. REINF.	STIRRUPS	REMARKS
GB1	24"	15"	2#7	2#7	#3@10	
GB2	24"	15"	3#7	3#7	#3@10	
GB3	24"	24"	3#7	3#7	#3@10	
GB4	24"	24"	3#8	3#8	#4@10	



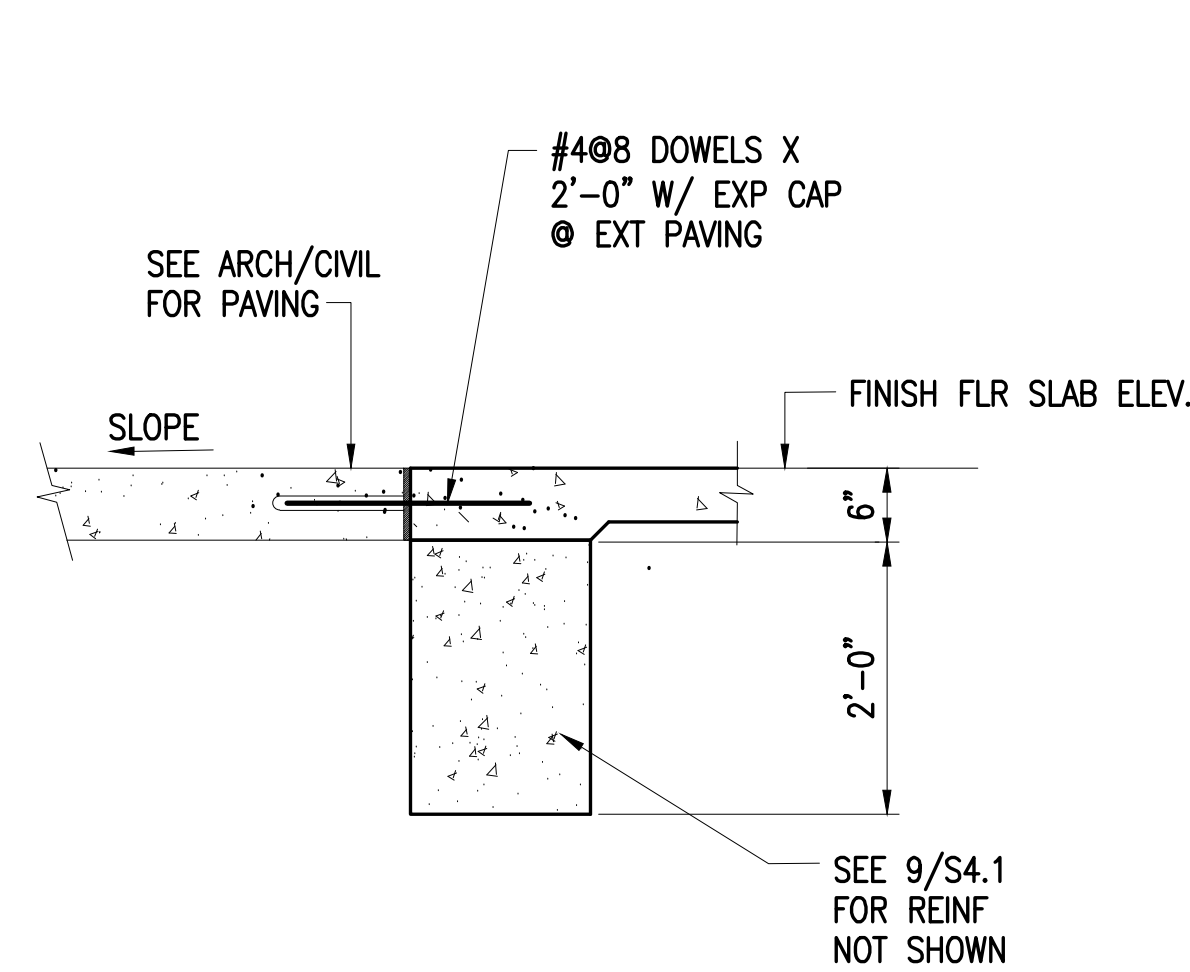
3 DETAIL (GRADE BEAM REINF)
S1.1 N.T.S.



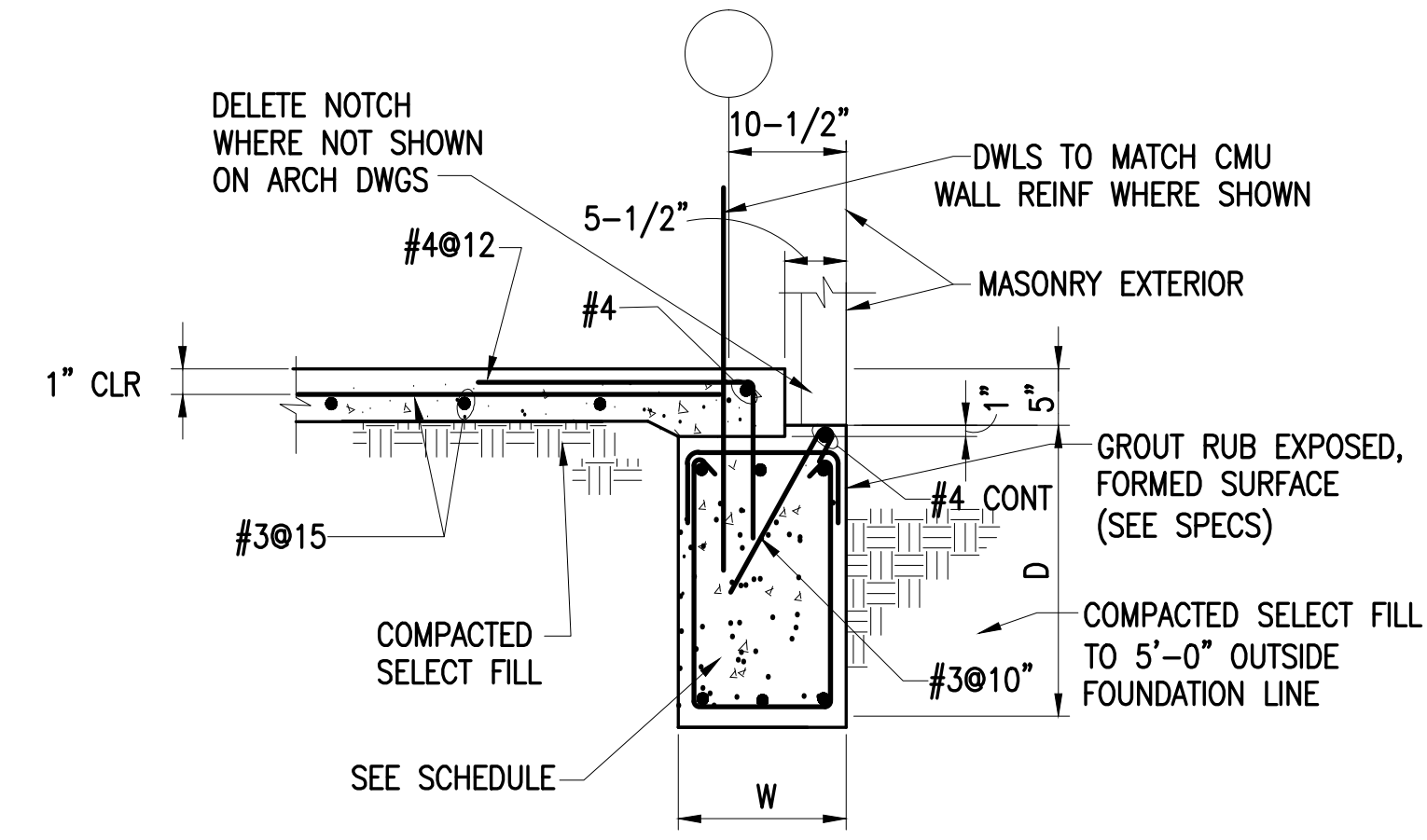
6 DETAIL (TYPICAL @ GB & WALL INTERSECTION)
S1.1 N.T.S.



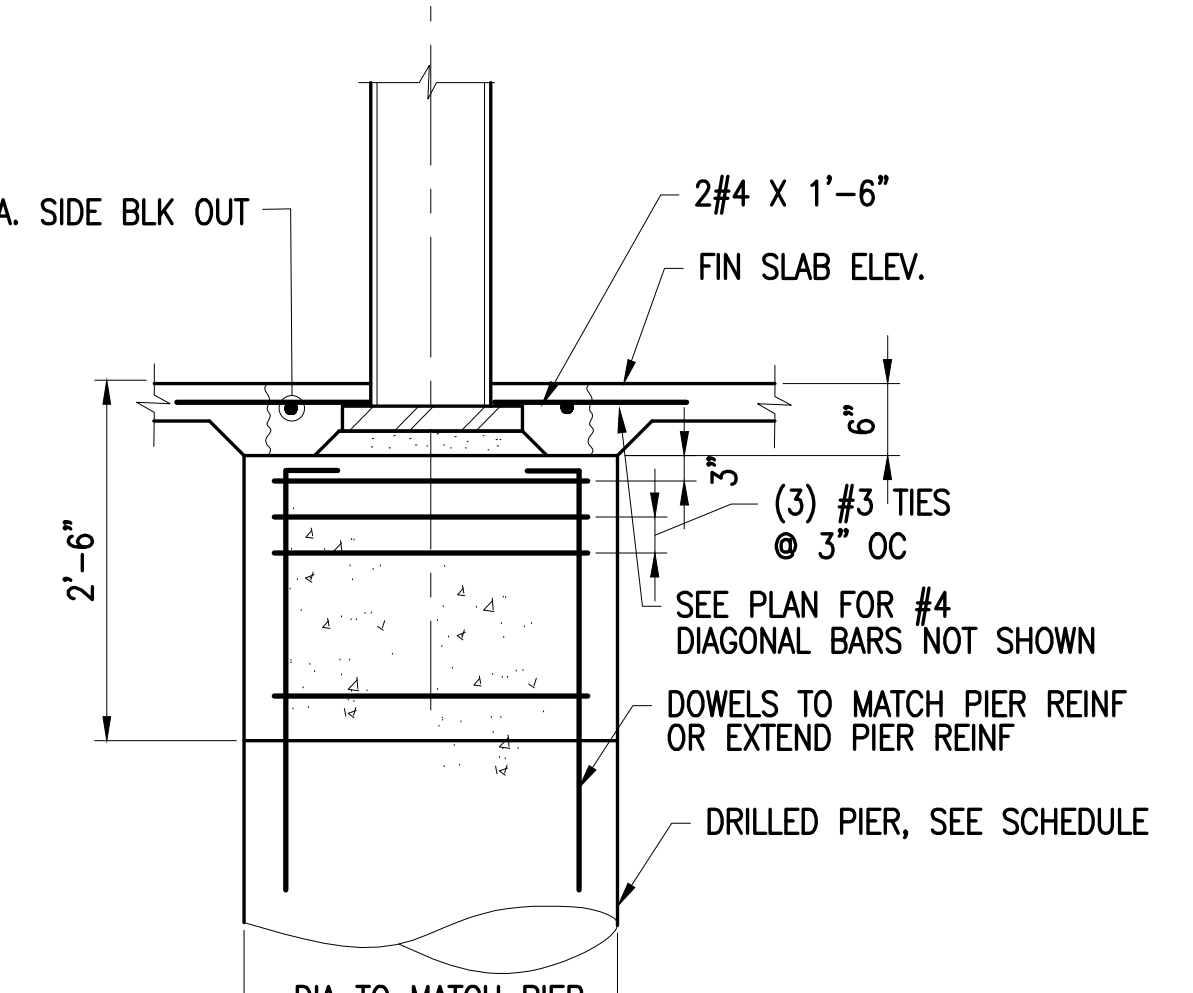
7 DETAIL (CONST. & CNTRL JOINTS)
S1.1 N.T.S.



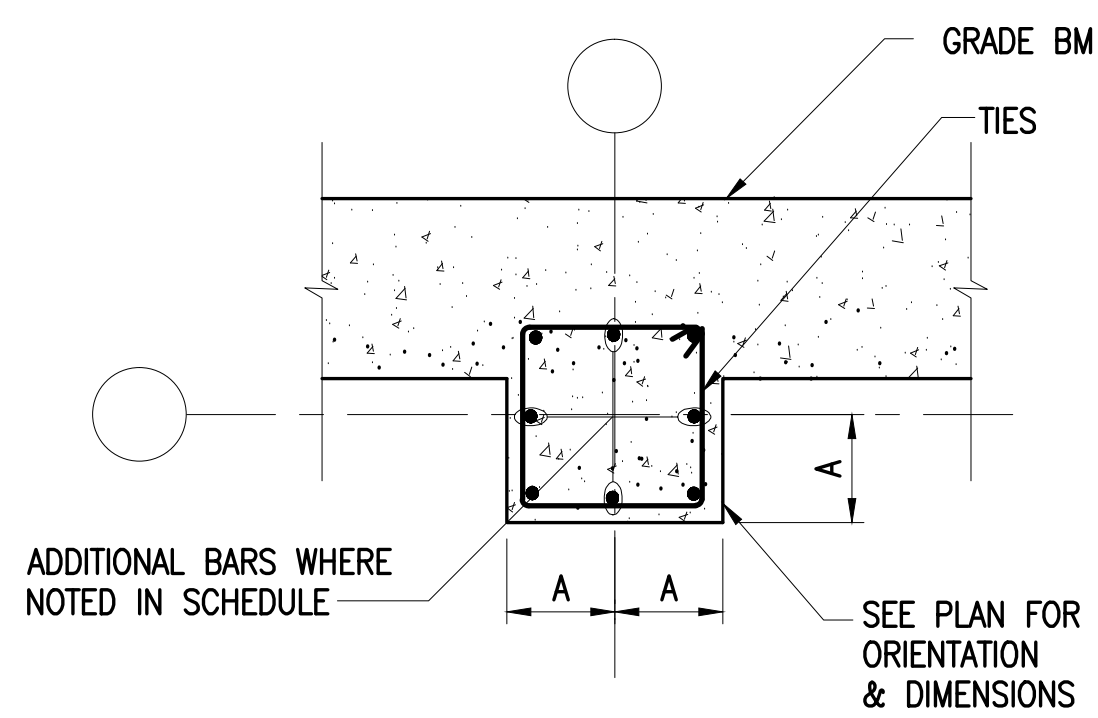
8 SECTION (3/4"=1'-0")
S1.1



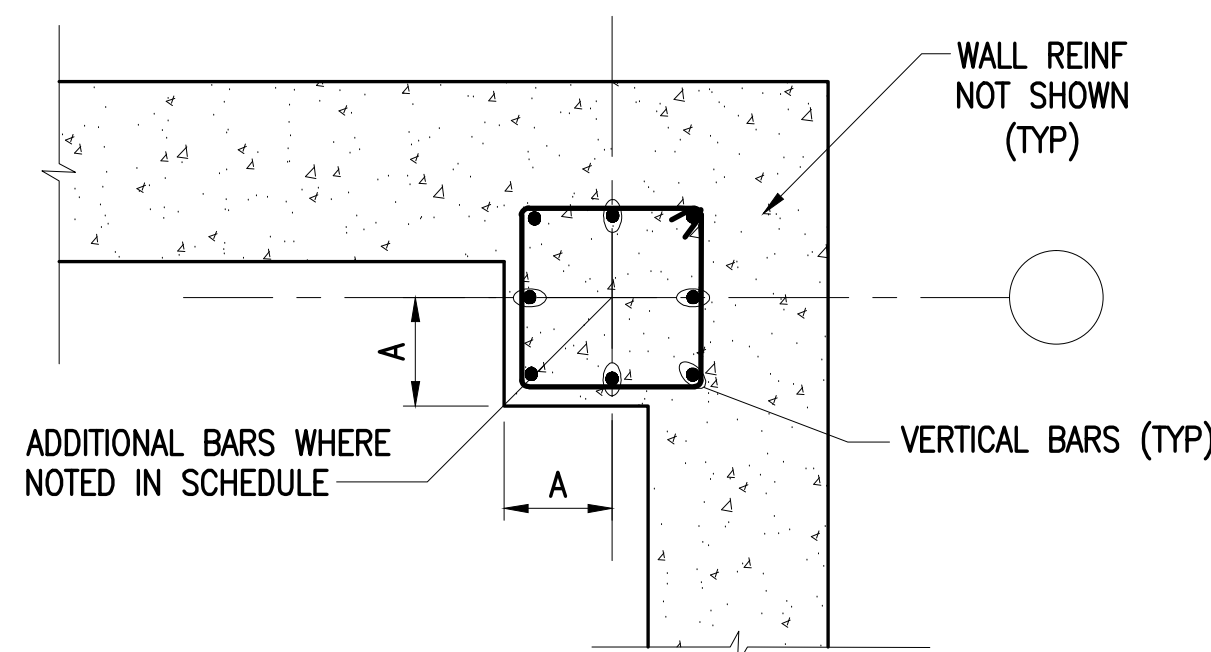
9 SECTION (3/4"=1'-0")
S1.1



10 SECTION (TYP @ INTERIOR COL PIER)
S1.1 (3/4"=1'-0")



11 PILASTER DETAIL
S4.1 (3/4"=1'-0")

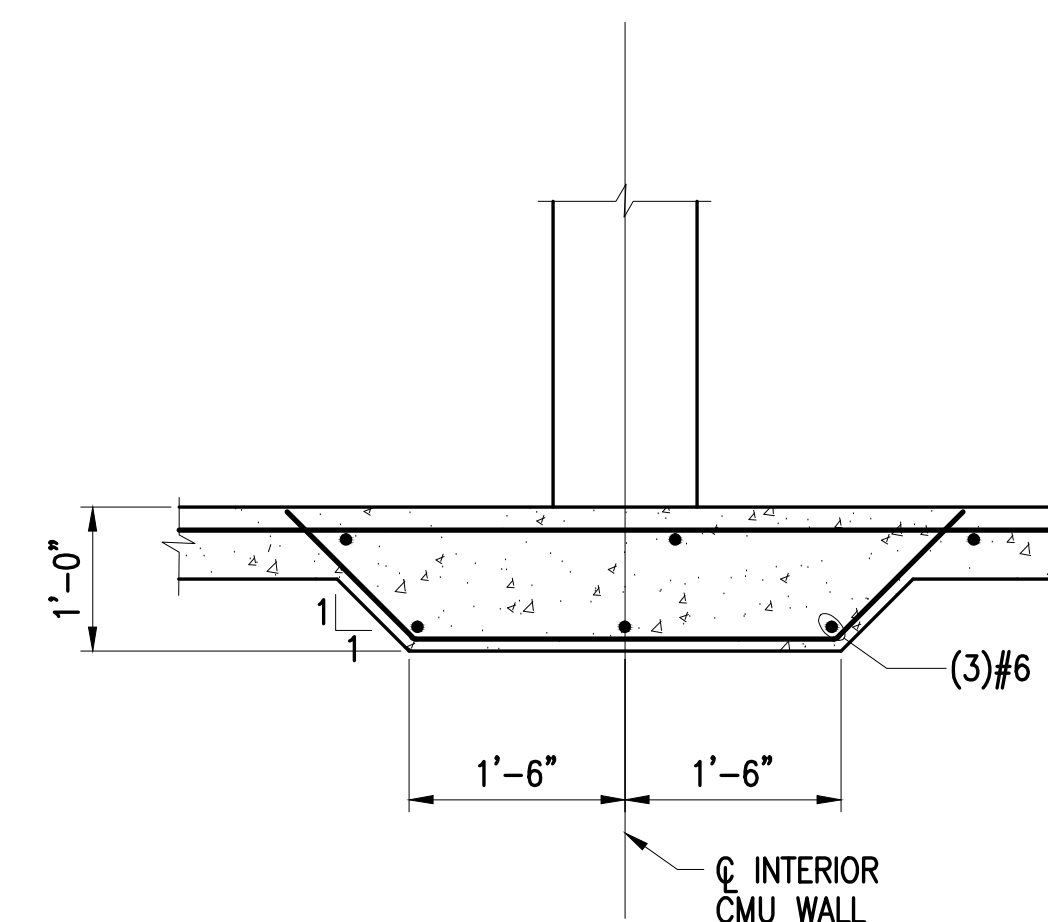


12 PILASTER DETAIL
S4.1 (3/4"=1'-0")

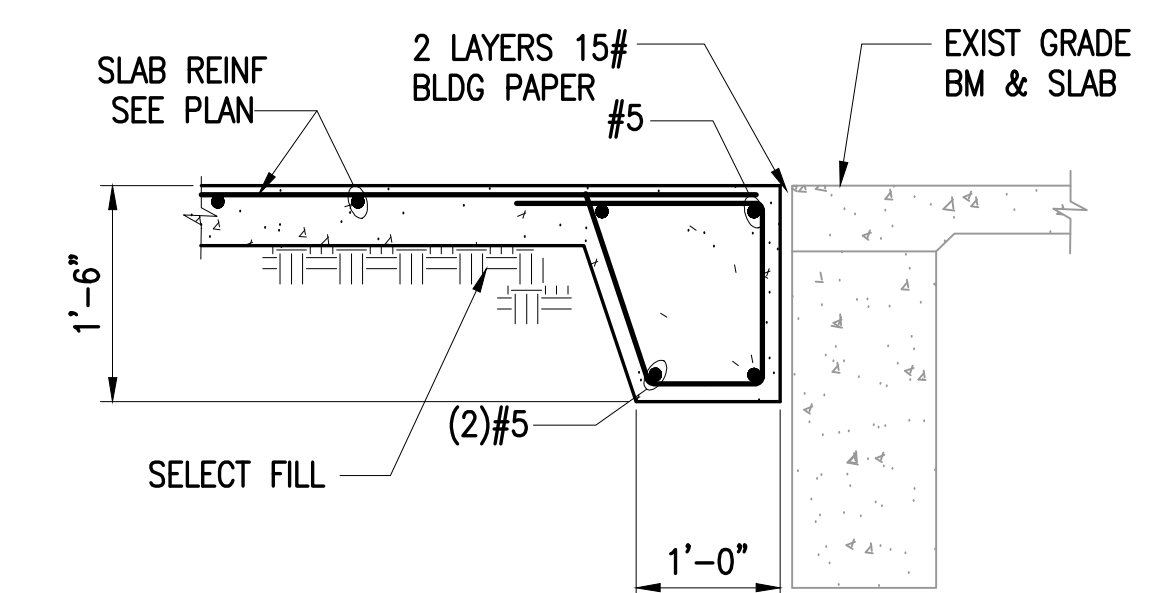
PILASTER SCHEDULE				
COL TYPE	DM A	VERT BARS	TIES	COMMENTS
C1	9"	#6	#3@6	*
C2	12"	#7	#3@6	*

* AT BRACE COLS ADD 4 SETS OF STIRRUPS @ 1/2" SPCS FROM BOTT. OF AB UP & ADDITIONAL BARS SAME SIZE AS VERT. BARS.

13 PILASTER SCHEDULE
S4.1 (3/4"=1'-0")



14 SECTION (TYP THICKENED SLAB DETAIL UNDER INTERIOR CMU WALL)
S4.1 (3/4"=1'-0")

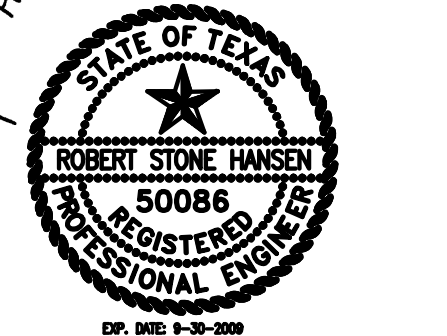


15 SECTION
S1.1

CONSULTANTS
Structural
 Robert Hansen & Associates
 11999 Katy Freeway, Suite 410
 Houston, Texas 77079
 (281) 989-1200
 (281) 989-9500
MEP
 MSE Consulting Engineers
 14225 Park Ten Place, Suite 810
 Houston, Texas 77084
 (281) 945-4545
 (281) 945-4549
Civil
 Brooks & Sparks
 21020 Park Row Dr
 Katy, TX 77449
 (281) 578-6655
 (281) 578-9686
Food Service
 Frank Clements and Associates
 2900 Wilcrest Drive, Suite 290
 Houston, Texas 77042
 (713) 784-3212
 (713) 784-2933
Technology

THREE ELEMENTARY SCHOOLS ADDITIONS/ RENOVATIONS
 PART 'A' - NORTHSIDE ELEMENTARY SCHOOL
 PART 'B' - HEIGHTS ELEMENTARY SCHOOL
 PART 'C' - ROOSEVELT WILSON ELEMENTARY SCHOOL
 TEXAS CITY INDEPENDENT SCHOOL DISTRICT

BAY ARCHITECTS
 18201 GULF FREEWAY
 P.O. BOX 891299
 HOUSTON, TEXAS 77289
 281.286.6685



PROJECT NO. 0754
 DATE March 11, 2009
 DRAWN JW
 CHECKED RH
 DATE ISSUE
 3/11/2009 Bid Set
 5/12/2009 Addendum #3

S4.1
 CONCRETE DETAILS
 PART B
 PART 'B' HEIGHTS