



Bay Architects

18201 Gulf Freeway
Webster, Texas 77598
Tel 281.286.6605
Fax 281.286.9606

ADDENDUM NO. 06
09 June 2009

Project: **THE NEW TEXAS CITY HIGH SCHOOL**
Texas City Independent School District

Issued by: **Bay Architects, Inc.**
18201 Gulf Freeway
Webster, TX 77598
281-286-6605

Bay Project No.: **0748**

Prepared for: **Prospective Proposers**



PART A: NOTICE TO PROPOSERS:

1. Receipt of this Addendum shall be acknowledged on the Proposal Form. Failure to do so may subject Proposers to disqualification. Each proposer shall make necessary adjustments and submit his proposal with full knowledge of all modifications, clarification, and supplemental data included therein.
2. This Addendum forms part of the Contract Documents and shall be incorporated integrally therewith. Where provisions of the following supplemental data differ from those of previously issued documents, this Addendum shall govern.
3. The following Contract Documents have been issued to date delineating the Work (Project).

Contract Documents	18 May 2009
Addendum 01	1 June 2009
Addendum 02	4 June 2009
Addendum 03	4 June 2009
Addendum 04	4 June 2009
Addendum 05	5 June 2009

4. This Addendum consists of: four (4) 8-1/2x11 pages; five (5) attached sketches, **ADD-06-01** through **ADD-06-05** (dated 06-08-09); as prepared by Conti Jumper Gardner & Associates. Total pages included in this Addendum: nine (9) pages.

PART B: CHANGES TO PRIOR ADDENDUM
“Any changes to prior issued addendum materials are listed here.”

5. None

PART C: CHANGES TO THE PROJECT MANUAL

6. None

PART D: CHANGES TO THE DRAWINGS

7. Sheet S0.0 General Notes: Revise Note 1 under Foundation Section to “Prepared grade area under all building slabs and grade beams shall be covered with a 15 mil plastic water vapor barrier meeting the requirements of ASTM E 1745, Class A or better and shall have a maximum water permeance of 0.01 perms when tested in accordance with ASTM E96. The water vapor barrier shall be installed and lapped in accordance with the requirements of ASTM E 1643. Penetrations shall be sealed in strict accordance with the manufacturer’s recommendations and requirements”.
8. Sheet S0.2 Typical Details: Add detail 10/S0.2. See attached **ADD-06-01**.
9. Sheet S0.2 Typical Details: Add detail 11/S0.2. See attached **ADD-06-02**.
10. Sheet S0.2 Typical Details: Add detail 12/S0.2. See attached **ADD-06-03**.
11. Sheet S0.2 Typical Details: Add detail 17/S0.2. See attached **ADD-06-04**.
12. Sheet S0.2 Typical Details: Add detail 18/S0.2. See attached **ADD-06-05**.
13. Sheet S1.1 Foundation Plan – Area ‘A’: Add note “Alternate #3 – Provide depression for Terrazzo tile, coordinate location and depth of depressions required with Arch”.
14. Sheet S1.2 Foundation Plan – Area ‘B’: Add note “Alternate #3 – Provide depression for Terrazzo tile, coordinate location and depth of depressions required with Arch”.
15. Sheet S1.2 Foundation Plan – Area ‘B’: Add note “Top of Pier El (-2’-0”) See 9/S4.4” to column at grids AN and 34.
16. Sheet S1.3 Foundation Plan – Area ‘C’: Add note “Alternate #3 – Provide depression for Terrazzo tile, coordinate location and depth of depressions required with Arch”.
17. Sheet S1.3 Foundation Plan – Area ‘C’: Revise Grid Label AR.8 to AQ.5.
18. Sheet S1.4 Foundation Plan – Area ‘D’: Add note “Alternate #3 – Provide depression for Terrazzo tile, coordinate location and depth of depressions required with Arch”.
19. Sheet S1.5 Foundation Plan – Area ‘E’: Add note “Alternate #3 – Provide depression for Terrazzo tile, coordinate location and depth of depressions required with Arch”.
20. Sheet S1.5 Foundation Plan – Area ‘E’: Add note “Top of Pier El (-2’-0”) See 9/S4.4” to column at grids X and 48.
21. Sheet S1.5 Foundation Plan – Area ‘E’: Revise Grid Label R.8 to Q.5.
22. Sheet S1.6 Foundation Plan – Area ‘F’: Add note “Alternate #3 – Provide depression for Terrazzo tile, coordinate location and depth of depressions required with Arch”.

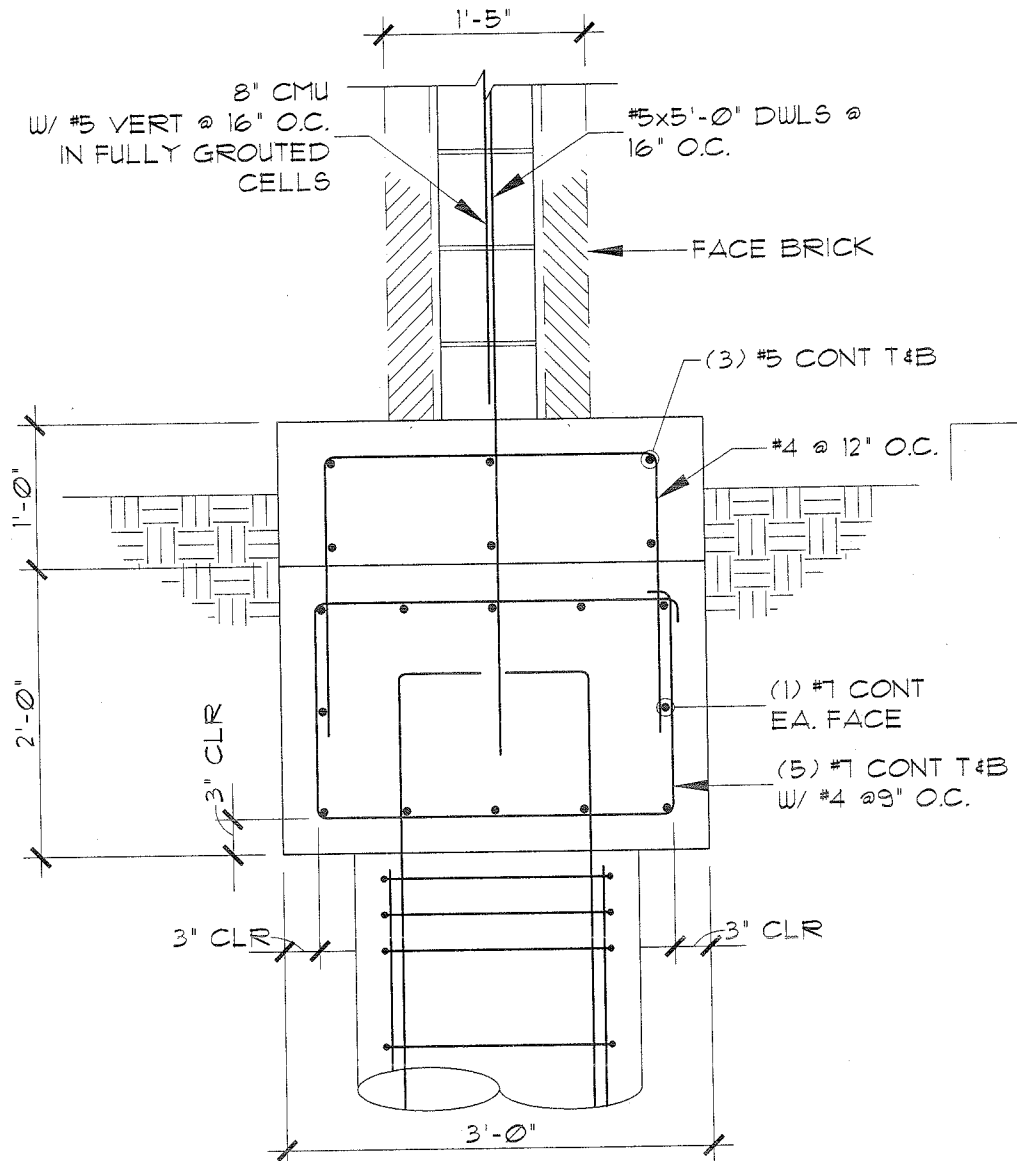
23. Sheet S1.7 Foundation Plan – Area ‘G’: Add note “Alternate #3 – Provide depression for Terrazzo tile, coordinate location and depth of depressions required with Arch”.
24. Sheet S1.8 Foundation Plan – Area ‘H’: Add note “Alternate #3 – Provide depression for Terrazzo tile, coordinate location and depth of depressions required with Arch”.
25. Sheet S1.8 Foundation Plan – Area ‘H’: Revise elevation at orchestra pit at auditorium near grid AL and grid 11 to E1 (-3’-6”).
26. Sheet S1.9 Foundation Plan – Area ‘J’: Add note “Alternate #3 – Provide depression for Terrazzo tile, coordinate location and depth of depressions required with Arch”.
27. Sheet S1.10 Foundation Plan – Area ‘K’: Add note “Alternate #3 – Provide depression for Terrazzo tile, coordinate location and depth of depressions required with Arch”.
28. Sheet S1.13A Foundation Plan – Stingdome Alternate #2: This sheet can be removed. Alternate #2 does not apply to the Existing Stingdome.
29. Sheet S1.15 Concession Foundation Plan: Add “Alternate #1” to sheet title.
30. Sheet S2.3 Second Floor Framing Plan – Area ‘C’: Revise Grid Label AR.8 to AQ.5.
31. Sheet S2.3 Second Floor Framing Plan – Area ‘C’: Add note to opening near grids AT and 48 “Coordinate stair opening size and location with Arch”.
32. Sheet S2.5 Second Floor Framing Plan – Area ‘E’: Add note to opening near grids P and 48 “Coordinate stair opening size and location with Arch”.
33. Sheet S2.5 Second Floor Framing Plan – Area ‘E’: Revise Grid Label R.8 to Q.5.
34. Sheet S2.8 Second Floor Framing Plan – Area ‘H’: Add TS 12x12x3/8” beams at elevation 10’-4” along grid BB between grids 13 and 15, grids 15 and 18, and grids 18 and 23.
35. Sheet S2.8 Second Floor Framing Plan – Area ‘H’: Add TS 8x6x3/8” (LSV) beam at elevation 10’-5 1/2” along grid BB between grids 7 and 8.
36. Sheet S2.8 Second Floor Framing Plan – Area ‘H’: Revise top of concrete elevation to 17’-9” and top of steel elevation to 17’-6” at mezzanine between grids AT and AQ and grids 11 and 13.
37. Sheet S2.8 Second Floor Framing Plan – Area ‘H’: Delete TS 6x6x1/4” post up near grids AT and 13.
38. Sheet S2.8 Second Floor Framing Plan – Area ‘H’: Revise beam along grid AT between grids 13 and 14 from W24x68 to W27x84 elevation 17’-3 1/2”.
39. Sheet S2.8 Second Floor Framing Plan – Area ‘H’: Revise top of concrete elevation to 17’-9” and top of steel elevation to 17’-6” at mezzanine between grids AG and AD and grids 11 and 13.

40. Sheet S2.8 Second Floor Framing Plan – Area ‘H’: Revise sections 10/S5.1 along grid 11 between grids AG and AD and grids AQ and AT to 2/S5.1.
41. Sheet S2.9 Second Floor Framing Plan – Area ‘J’: Add TS 8x6x3/8” at overhead door along grid 14 between grids AB and Z. Section 15/S0.1 applies to new TS 8x6.
42. Sheet S2.11 Roof Framing Plan – Area ‘L’: Revise TS beam sizes along grid 1 between grids J and K, grids K and Q, grids Q and T, and grids T and V to TS 14x10x1/2” at elevation 12’-10 1/2”.
43. Sheet S2.11 Roof Framing Plan – Area ‘L’: Delete note “Header, see 12/S6.1” between grids P and N near grid 19. Masonry lintel 5/S0.1 applies.
44. Sheet S2.13 Concession Roof Framing Plan: Add “Alternate #1” to sheet title.
45. Sheet S3.8 Roof Framing Plan – Area ‘H’: Revise section 4/S6.1 along grid BB between grids 7 and 8 to 19/S6.4.
46. Sheet S3.9 Roof Framing Plan – Area ‘J’: Revised drawings to show joists between grids A and AB and grids 7 and 14 (gym area) at 15’-0” spacing to match note “72DLHSP Double Pitched Chord at 15’-0” oc”.
47. Sheet S3.10 Roof Framing Plan – Area ‘K’: Revised drawings to show joists between grids A and AB and grids 7 and 14 (gym area) at 15’-0” spacing to match note “72DLHSP Double Pitched Chord at 15’-0” oc”.
48. Sheet S3.10 Roof Framing Plan – Area ‘K’: Delete note “Header, see 11/S6.1” between grids 6 and 7 near grid A. Masonry lintel 5/S0.1 applies.

PART E: RE-ISSUED SHEETS

49. None

END OF ADDENDUM



DETAIL AT MARQUEE SIGN

10

SCALE: 3/4" = 1'-0"



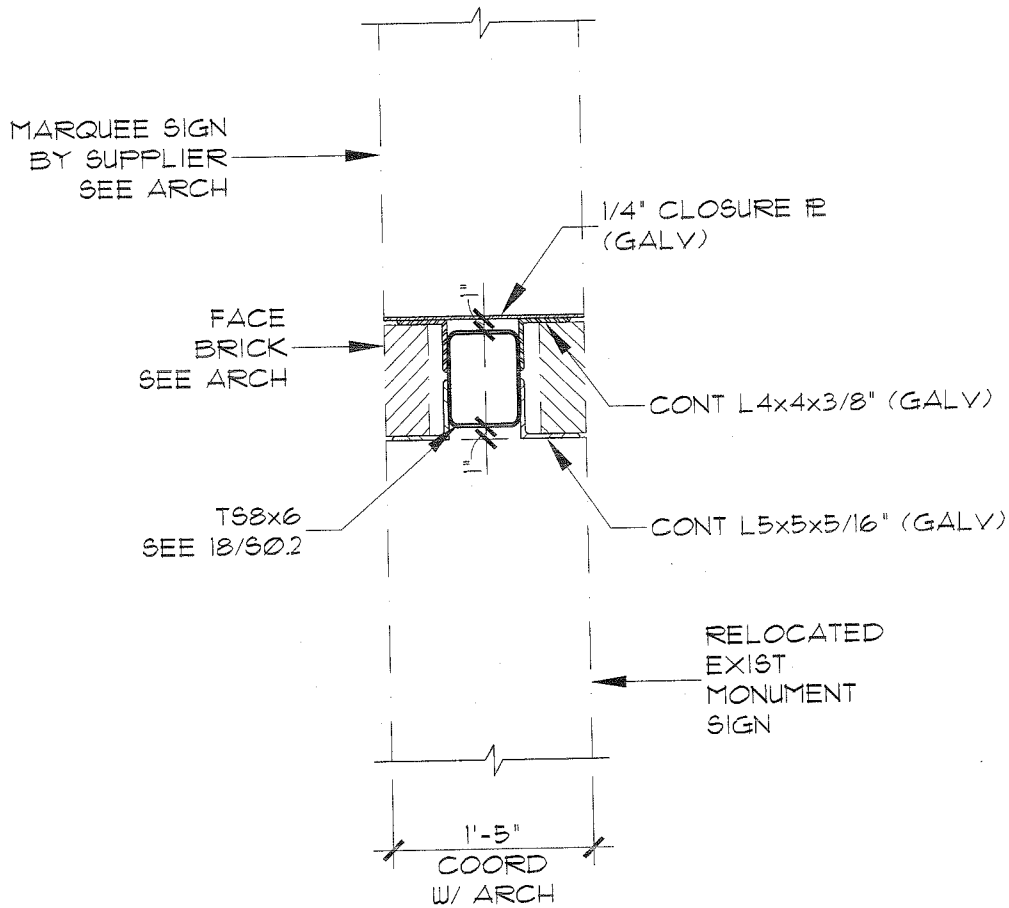
06/08/09

FROM SHEET S0.2



BAY ARCHITECTS
 18201 GULF FREEWAY
 P.O. BOX 891209
 HOUSTON, TEXAS 77289
 281.286.6605

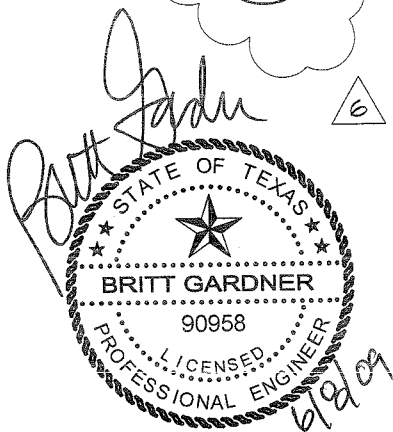
New Texas City High School 1501 NINTH AVENUE NORTH TEXAS CITY, TEXAS 77590 Texas City Independent School District	ADD-06-01
	0714
	3/4" = 1'-0"
	JUNE. 08, 2009 208294S02.dwg



DETAIL AT MARQUEE SIGN

11

SCALE: 3/4" = 1'-0"



06/08/09

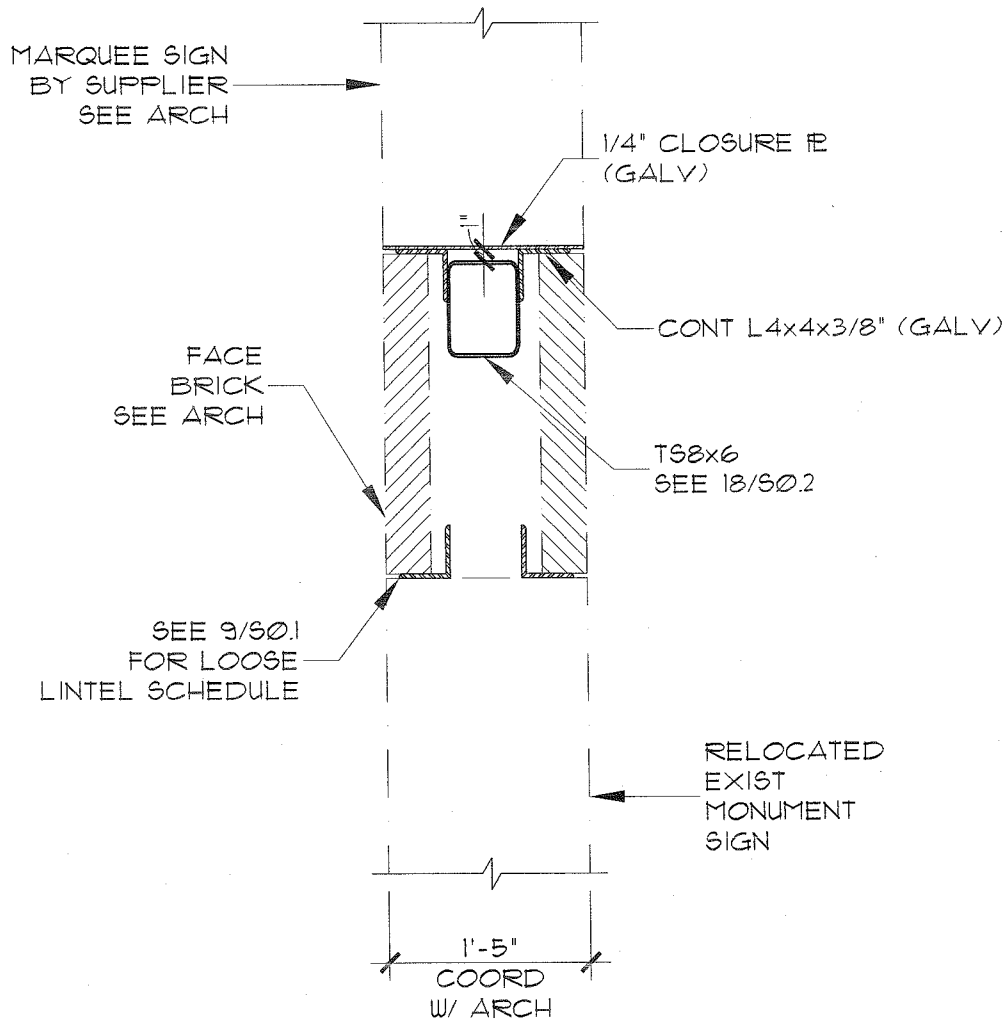
FROM SHEET S0.2



BAY ARCHITECTS
 18201 GULF FREEWAY
 P.O. BOX 891209
 HOUSTON, TEXAS 77289
 281.286.6605

New Texas City High School
 1501 NINTH AVENUE NORTH
 TEXAS CITY, TEXAS 77590
 Texas City Independent School District

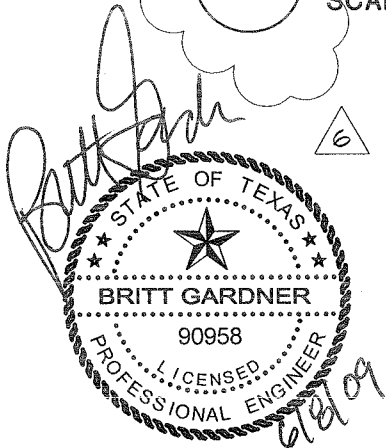
ADD-06-02
 0714
 3/4" = 1'-0"
 JUNE. 08, 2009
 208294S02.dwg



**DETAIL AT
MARQUEE SIGN**

12

SCALE: 3/4" = 1'-0"



06/08/09

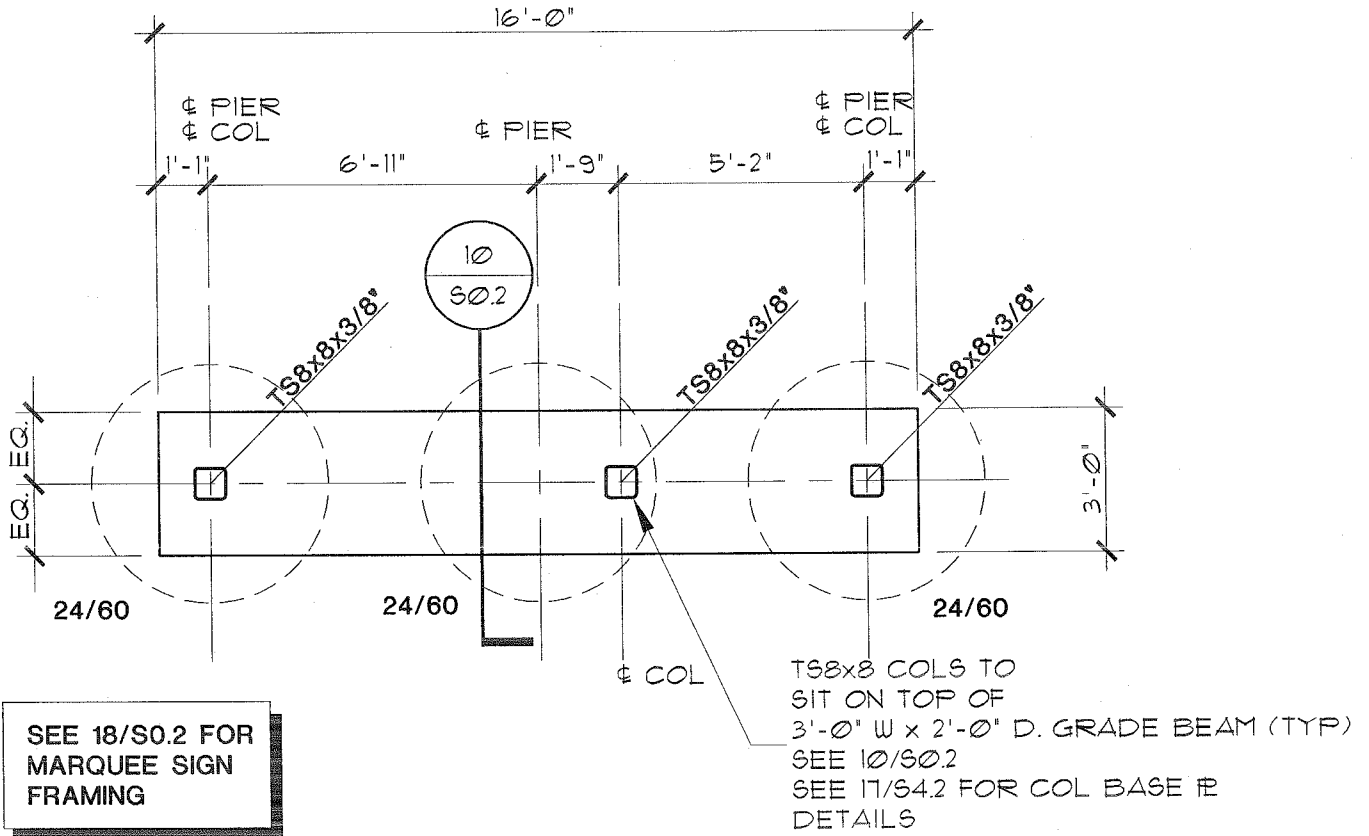
FROM SHEET S0.2



BAY ARCHITECTS
18201 GULF FREEWAY
P.O. BOX 891209
HOUSTON, TEXAS 77289
281.286.6605

New
Texas City High School
1501 NINTH AVENUE NORTH
TEXAS CITY, TEXAS 77590
Texas City Independent School District

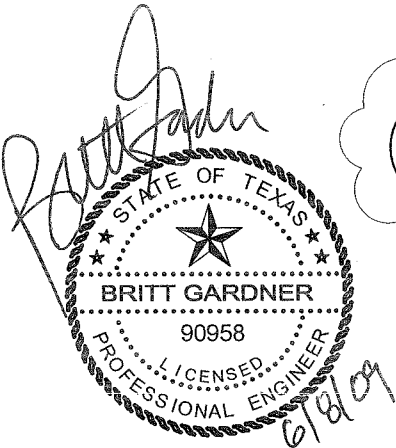
ADD-06-03
0714
3/4" = 1'-0"
JUNE. 08, 2009
208294S02.dwg



MARQUEE SIGN FOUNDATION PLAN

17

SCALE: 1/4" = 1'-0"



06/08/09

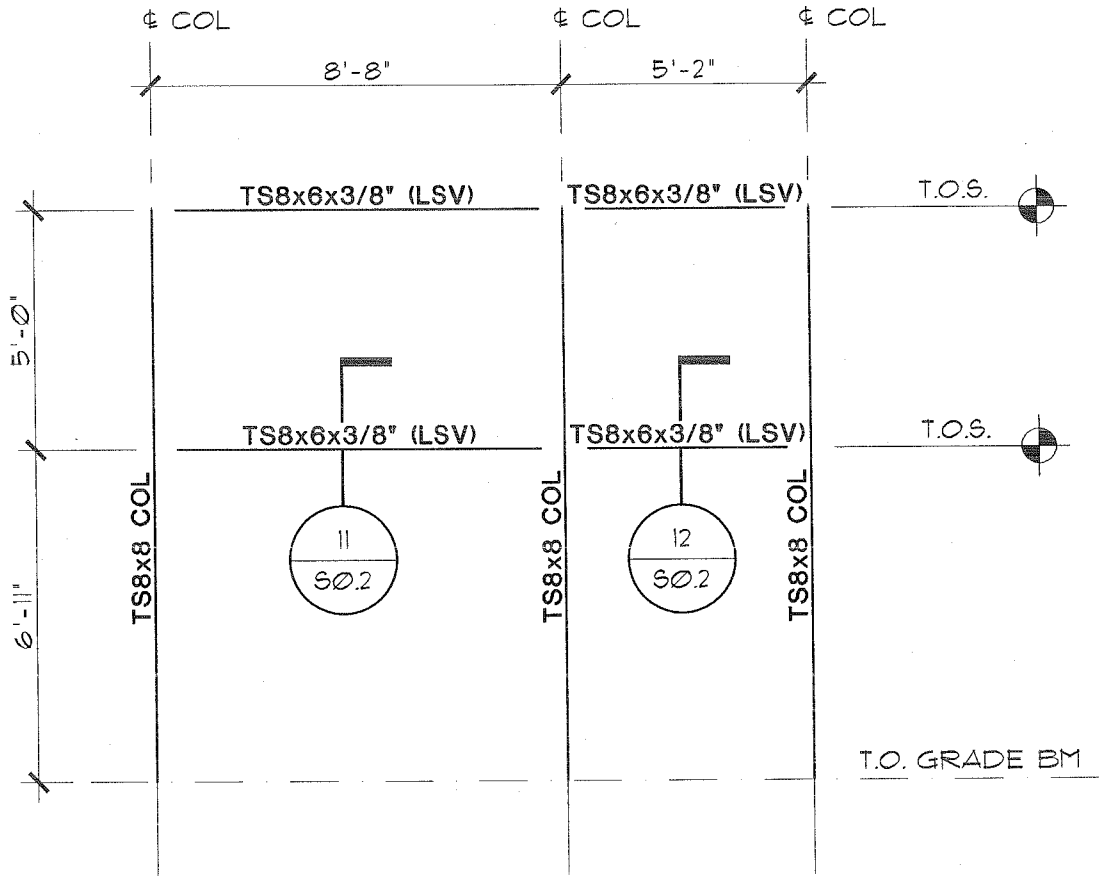
FROM SHEET S0.2



BAY ARCHITECTS
 18201 GULF FREEWAY
 P.O. BOX 891209
 HOUSTON, TEXAS 77289
 281.286.6605

New
Texas City High School
 1501 NINTH AVENUE NORTH
 TEXAS CITY, TEXAS 77590
 Texas City Independent School District

ADD-06-04
 0714
 1/4" = 1'-0"
 JUNE. 08, 2009
 208294S02.dwg



Britt Gardner

18

MARQUEE SIGN FRAMING ELEVATION

SCALE: 1/4" = 1'-0"

06/08/09

FROM SHEET S0.2



BAY ARCHITECTS
 18201 GULF FREEWAY
 P.O. BOX 891209
 HOUSTON, TEXAS 77289
 281.286.6605

New Texas City High School
 1501 NINTH AVENUE NORTH
 TEXAS CITY, TEXAS 77590
 Texas City Independent School District

ADD-06-05
 0714
 1/4" = 1'-0"
 JUNE. 08, 2009
 208294S02.dwg